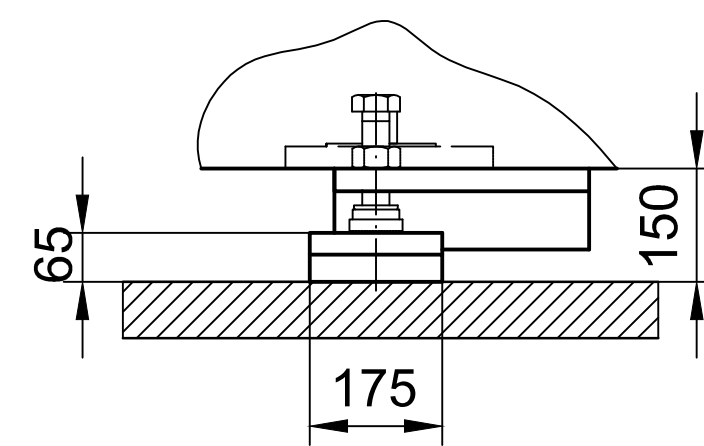


② Intermediate support



TO BE PROVIDED BY OTHERS (Observation of all Standards, guidelines acc. to each specific country)

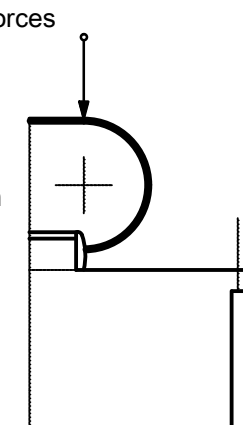
Clear access route into the building 3.5 m x 3.5 m
access route must be obstruction free

Ⓢ Electric mains up to upper part of moving walk
Free cable ends 1500mm long

Ⓢ Lifting points by others
loading per point 50 kN

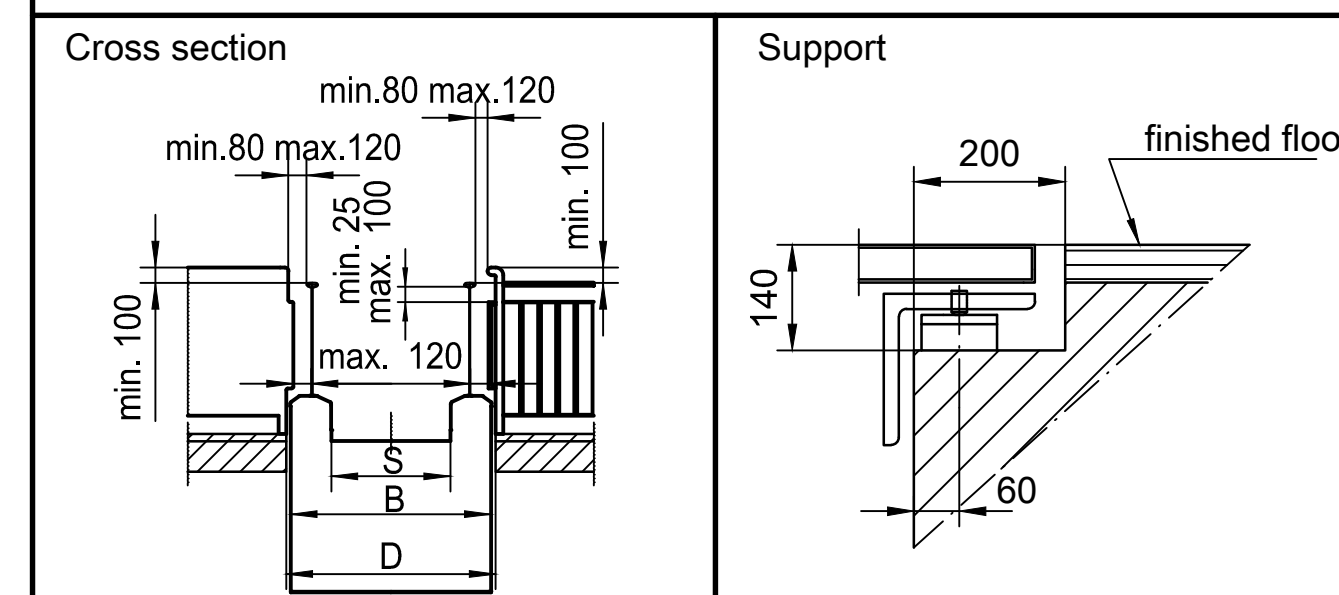
Ⓢ Intermediate support after erection of the moving walk by others
Additionally 10% of the intermediate-support-forces have to be considered as horizontal forces

↑ A railing reaching right to the moving walk balustrades must be mounted according to
EN 115-1 2008 A2.7. This railing must be designed to prevent people from falling down
the balustrades when they let themselves being dragged by the handrail. The entry to
the moving walk handrail must be prevented. Barrier plates do not perform the function
of a protective railing! See detail cross section!



© (THYSENKRUPP FAHRTREPPEN GMBH 2016)

ThyssenKrupp Fahrtreppen



Tolerance which have to be kept by others

Deviations in mm for distance at the measuring points

	to	4m	10m	25m	50m	100m
		± 5	± 10	± 15	± 20	± 30
1	Modifications					
2						
3						
4						
5						
6						
7						
8						
9						
10						

orinoco xtra	6 EK - 1200mm 0°	Drawn	Date	Name
		18.08.2016		Wildow

moving walk (slimline, indoor)

Installation of an moving walk

E12060571-00

Scale 1:50 1:10

