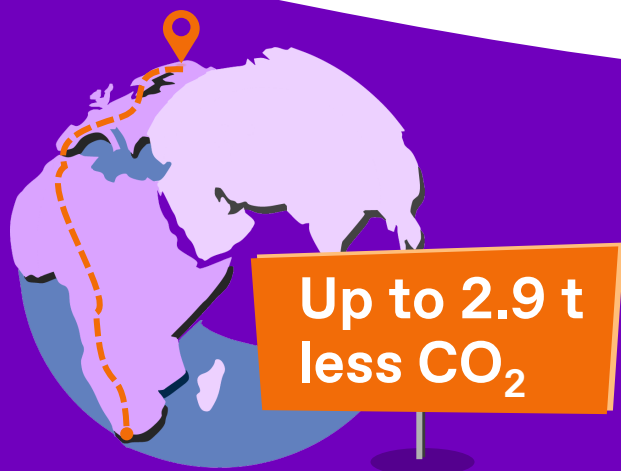


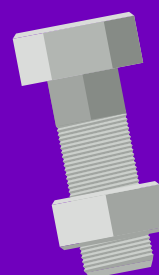
10 FACTS ABOUT THE E IN EOX



Up to 2.9 t less CO₂

Compared to TKE's previous offerings, a standard EOX elevator configuration will save the same amount of CO₂ over its entire product lifecycle that an average petrol car would emit travelling from South Africa to Norway. That's a 17,000 km ride not taken.

EOX is
made in Europe
where our factories run on
100% green electricity



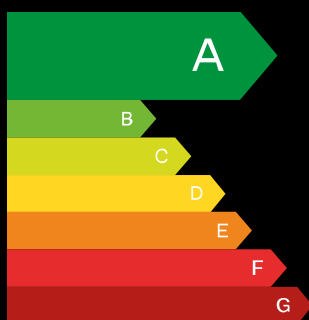
70%

of the materials an EOX elevator is made of are **directly recyclable** at the end of its product life.



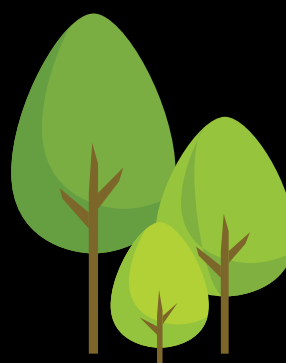
Engineered to save energy

300 kg is the weight of a grizzly bear – and the same amount by which the weight of a typical EOX elevator system is reduced as compared to our previous offerings. Thanks to this engineering achievement, the average logistics carbon footprint for delivery to your building site is **10% smaller**, and up to **28% less energy** is needed to move the elevator cabin in your building.

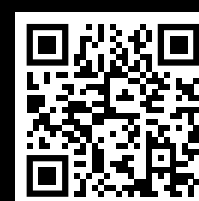


Class A

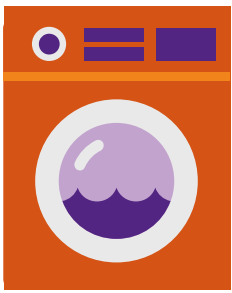
The certified A energy efficiency rating for EOX is the **highest category** achievable for elevators.



Learn more about EOX in our interactive **digital brochure**



brochure.tkelevator.com/en-EA/eox



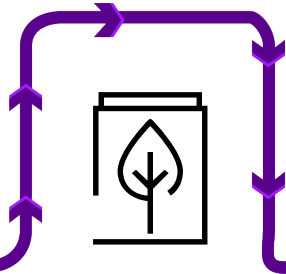
1.4 kWh

The average daily electricity consumption of a typical EOX is the equivalent amount needed for a single cycle of a household washing machine's cold water (!) programme.

The TKE-exclusive

eco-mode

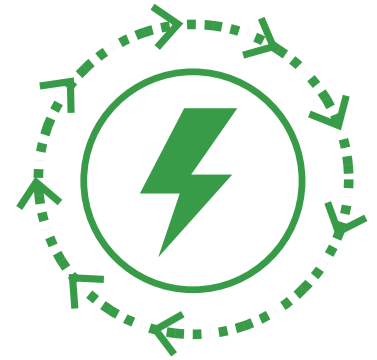
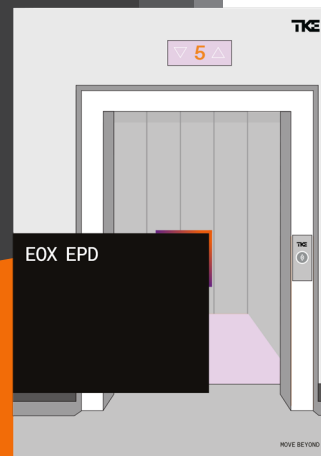
enables EOX to adjust its top speed and acceleration force depending on the passenger traffic patterns in your building, thereby actively saving energy without any noticeable change in performance. The active eco-mode status is highlighted for passengers in the cabin display.



Every EOX owner can access an accurate

energy consumption report

of their actual EOX elevator, available online with a few clicks inside the customer portal. To analyse and optimise the elevator's performance, and to verify TK Elevator's efficiency claims.



EOX features a

regenerative drive (VVVF)

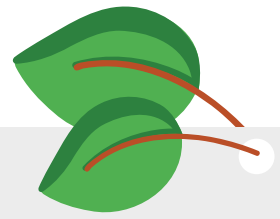
as a standard, enabling it to recuperate electricity from braking and feeding it back into your building's grid.

On average, this highly efficient variable voltage, variable frequency unit is capable of regenerating 43% of the elevator's power. The taller the building, the more power can be recovered.

Detailed to the comma and officially verified: the **Environmental Product Declaration (EPD®)** is a comprehensive study we publish about the ecological aspects and impacts of EOX.

You can download the **EOX EPD®** here environdec.com/library/epd8258

... and 10 more about TK Elevator



NET 0

CO₂ global emissions by 2050

TK Elevator has pledged to achieve a **Net Zero** of CO₂ emissions by 2050. We have also set milestones on this journey with progressive reduction of our direct and indirect emissions in two scopes by 2030 and 2040. Our targets have been externally validated and are in line with the 1.5° agreement.



CDP A-List

TK Elevator was recognised in the acclaimed [A-list](#) published by the global non-profit organisation CDP for three consecutive years.



EcoVadis

We were awarded the [EcoVadis](#) gold medal, with TK Elevator now ranking among the top 5% of all companies currently assessed by the sustainability rating agency.



Sustainalytics

TK Elevator tops the [Sustainalytics global ESG risk rating](#) in the machinery industry category and has achieved the best result among over 500 machinery companies.



Supplier Engagement Leader 2022

We were recognised by [CDP](#) as a “Supplier Engagement Leader 2022” for taking action to measure and reduce environmental risks within our supply chain.



UN Global Compact Signatory

TK Elevator is a signatory of the [UN Global Compact](#).



Global Elevator Safety Forum

TK Elevator is a co-founder of the [Global Elevator Safety Forum](#) to pursue a safe industry without accidents.



Member of RE100

We joined the worldwide [RE100](#) (Renewable Electricity) initiative and committed to use renewable electricity only across our global operations by 2030.



The Science Based Targets

The [Science Based Targets initiative](#) approved TK Elevator’s emission reduction targets as being consistent with the levels required to meet the goals of the Paris Climate Agreement.



We make all our ESG targets and achievements public in a comprehensive sustainability report. “**Acting today to build a sustainable future**” is 80+ pages long, exceptionally detailed, externally validated, and openly accessible on our global webpage: tkelevator.com/global-en/sustainability



EOX is TK Elevator’s new eco-efficient and digitally native elevator platform. It’s a fusion of the latest energy-saving and digital technologies and spells out TK Elevator’s commitment to add value to your buildings. Learn all about our new product at eox.tkelevator.com