

Elevator Technology

thyssenkrupp Elevator Innovation and  
Operations GmbH Asia Pacific Office  
7/F, Sun Hung Kai Centre,  
30 Harbour Road,  
Wanchai, Hong Kong  
T: (+852) 3511 0688  
F: (+852) 3511 0678  
www.thyssenkrupp-elevator.com



Elevator Technology

# enta200

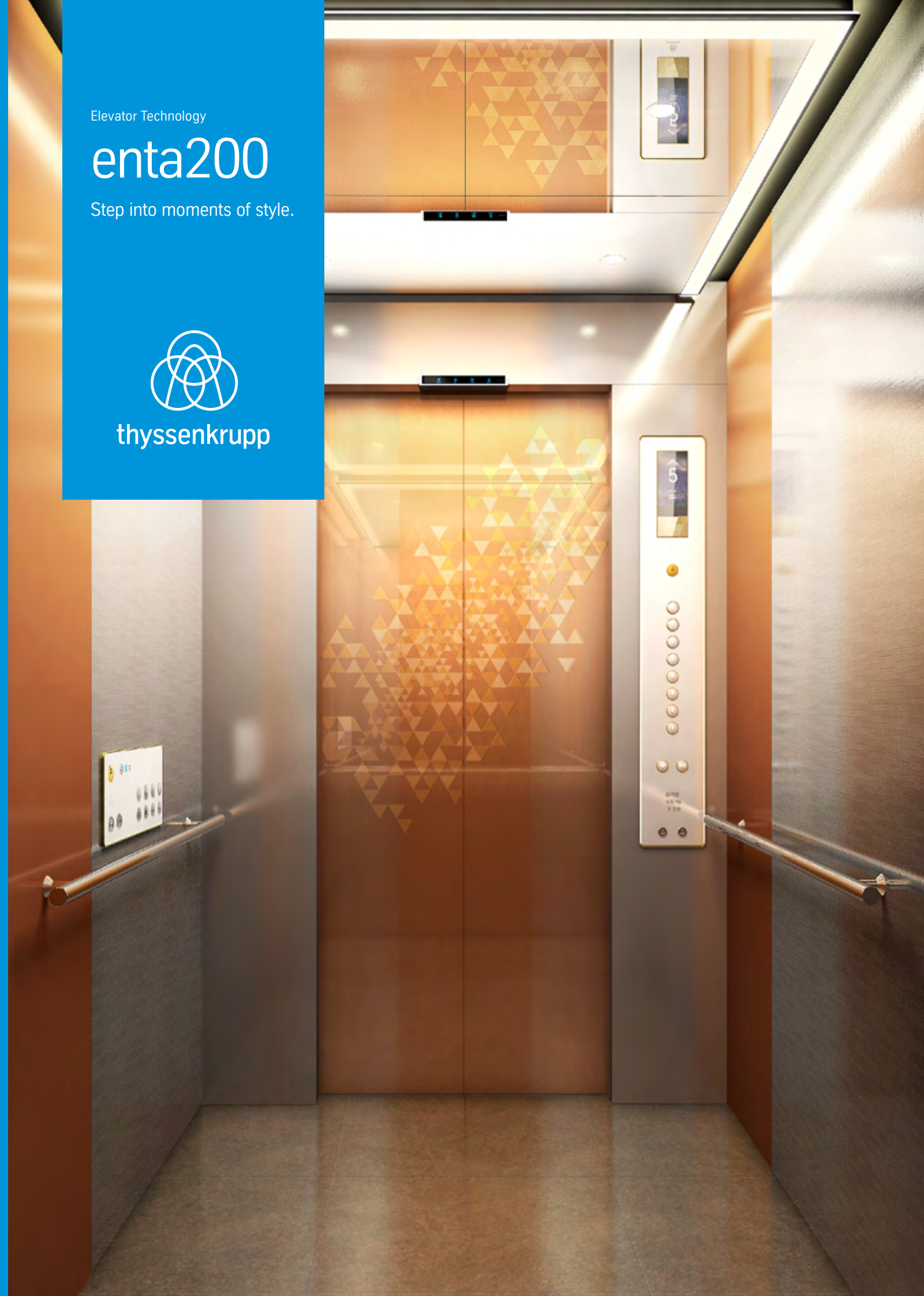
Step into moments of style.



thyssenkrupp

enta200 English (09/2020) thyssenkrupp Elevator Innovation and Operations GmbH Asia Pacific Office  
The details quoted in this brochure can only be viewed as binding when confirmed expressly in writing. Reproduction, reprint and storage only with authorization of the editor.

engineering. tomorrow. together.







# enta200 step into moments of style.

Stylish and practical, enta200 has been engineered to meet the needs of low-rise residential and commercial applications. Stylish cabin designs combine with the practical features of this machineroom-less elevator to provide a comfortable ride and add value to your project.

### Designed for

- High-end residential buildings
- Mid-end commercial buildings

### Specification

- Max. travel height: 45m
- Max. number of floors: 16
- Rated speed: 1.00m/s - 1.50m/s
- Rated load: 320kg - 1,200kg

### Compact and reliable



#### Increase your returns

On-trend cabin designs, high performance and efficiency add value to your building.



#### Underline your building's premium

Luxury fixtures and striking hall designs elegantly integrate to match and enhance your building's character.



#### Travel in style

First class usability and aesthetic environments guarantee passenger satisfaction and comfort.



# Increase your returns.

A choice of trend-based cabin designs to enhance your building's premium.



## Trend based design.

Our team constantly studies architectural and interior design trends and has created 6 cabins that complement the look and feel of every building.

## High-end materials.

We use premium materials throughout, in colors, textures and patterns that combine to stimulate the senses with tasteful luxury.

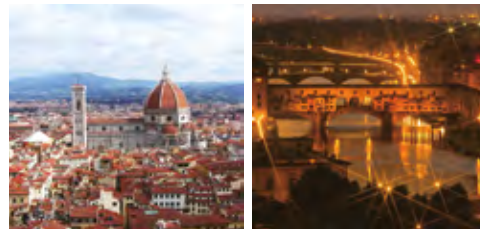
## A really premium look.

From the colorful superior screen to the sleek surface of the COP, each detail is carefully considered to give your building the premium look it deserves.



### Firenze.

Inspired by the skyline of Florence, warm terracotta tones combine with abstract geometrical patterns to evoke rooftops under a starlit sky.



Rear view

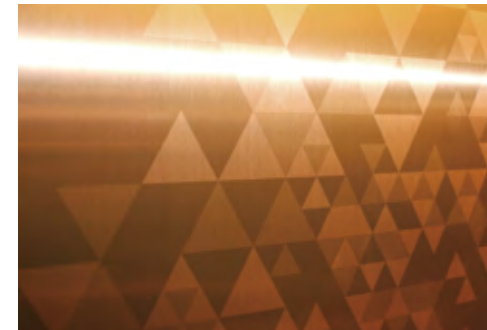
#### Cabin design

Ceiling	GX-06
Wall	STS Mirror, Hi-Vib New Fine Art (NFA-04) Superteel (Bronze) + Laser Graphic (ST-03BZ)
Door	Superteel (Bronze) + Laser Graphic (ST-02BZ)
COP	DS-G-TK77G HAS-G-TK77G (for disabled)
Handrail	HRR-01B
Floor	Decotile (DET6237)



Front view

#### Material feature



Inspired by night views of the Ponte Vecchio in Florence, this chic design is right up-to-date.



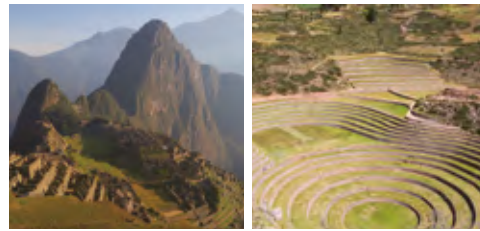
Main entrance

Other entrance



### Inca.

Sophisticated golden hues and complex patterns stir feelings of history and luxury.



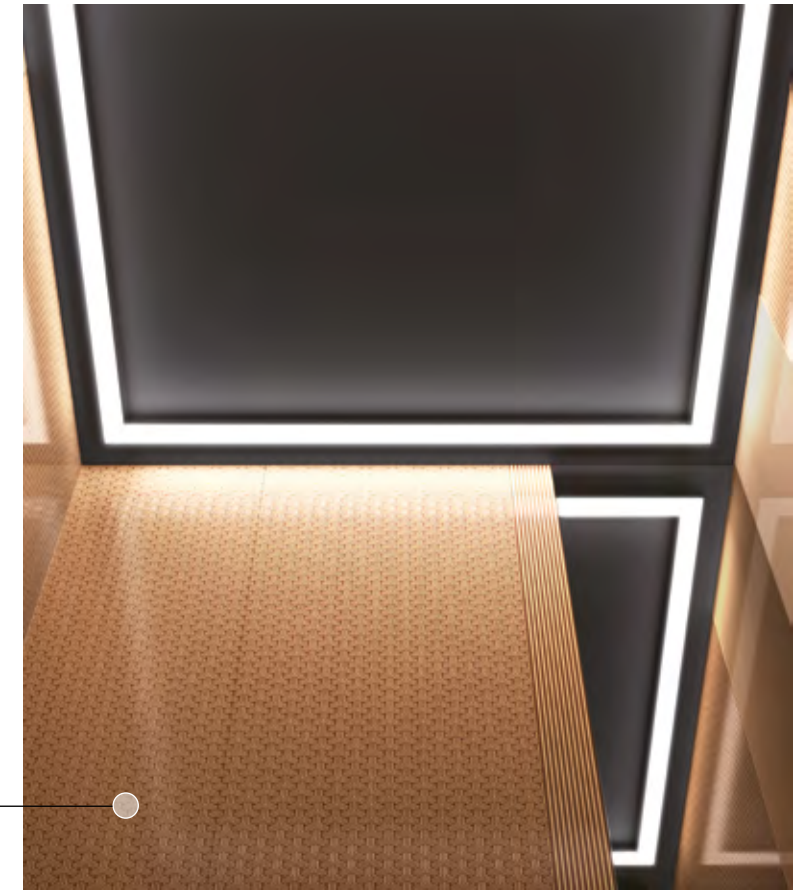
Rear view

#### Cabin design

Ceiling	GX-07
Wall	STS Mirror, Silk Metal (SP-04BR) Silk Metal (SP-05BR) Powder coating (Inca brown)
Door	Silk Metal (SP-03BR)
COP	DS-G-TK77G / HAS-G-TK77G (for disabled)
Handrail	HRR-01G
Floor	Decotile (DET6240)



Front view



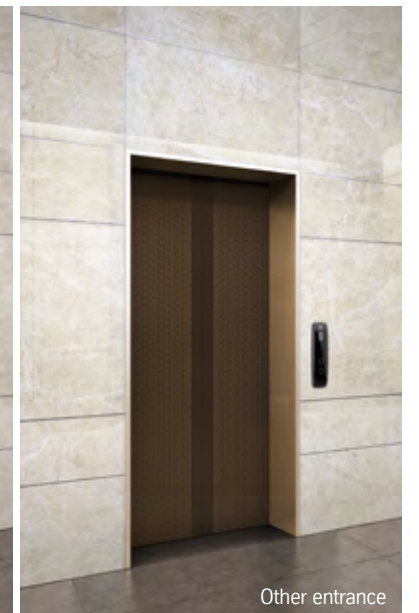
Material feature



Classical design inspired by the ancient Inca Empire.



Main entrance



Other entrance



## Venice.

Sparkling blues and mother-of-pearl blend with silver/gray elements reminiscent of the palazzos and waters of the canal city.



Front view

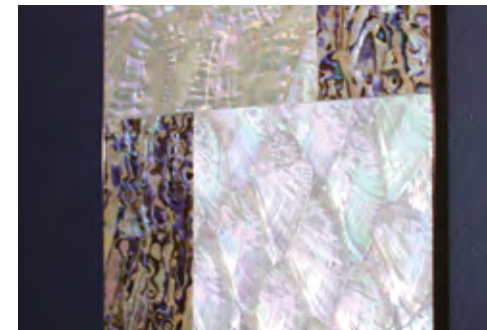
### Cabin design

Ceiling	GX-05
Wall	STS Mirror, Texcoat (Navy) + Seashell panel New Fine Art (NFA-04)
Door	New Fine Art (NFA-05)
COP	DS-G-TK77G HAS-G-TK77G (for disabled)
Handrail	HRR-01B
Floor	Decotile (DET6258)



Rear view

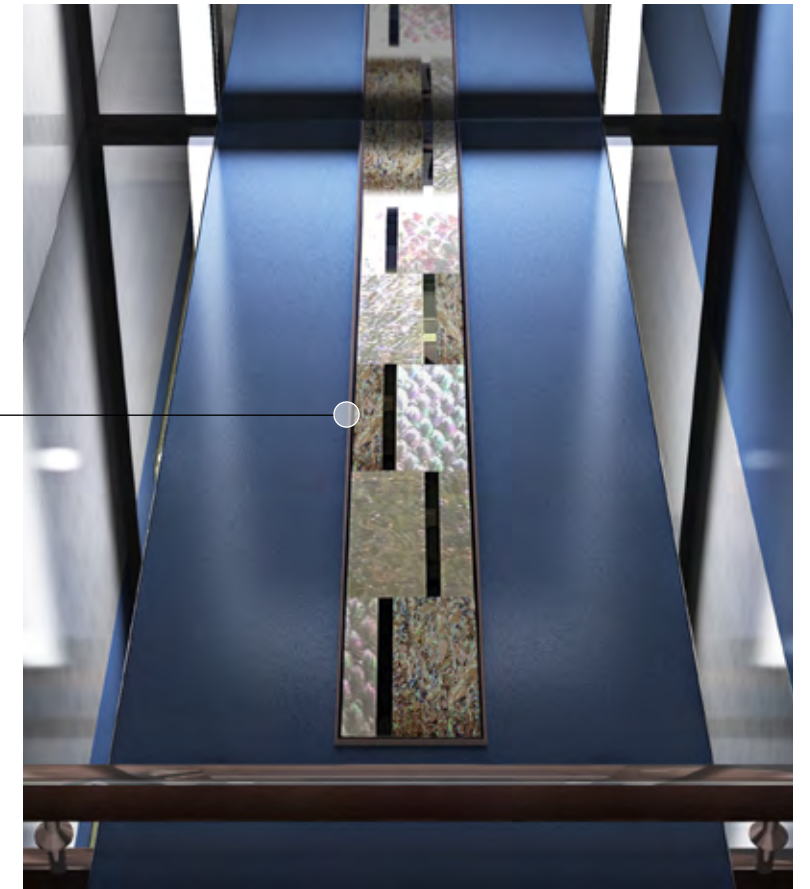
### Material features



An abstract twist on mother-of-pearl and glass adds Venetian sophistication.



Rich blues express the city's timeless link with the sea.



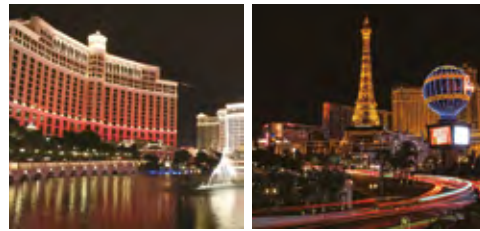
Main entrance

Other entrance



## Bellagio.

Modern opulence, blending eye-catching contemporary luxury and classical elegance.



Rear view

### Cabin design

Ceiling	GX-05
Wall	Hi-Vib, STS Mirror + Laser Graphic (LM-25) Vernox (Bronze)
Door	STS Ti-Bronze mirror, Nano etching (NE-02B)
COP	DS-G-TK77G HAS-G-TK77G (for disabled)
Handrail	HRR-01G
Floor	Decotile (DTE2251, DEW5781)

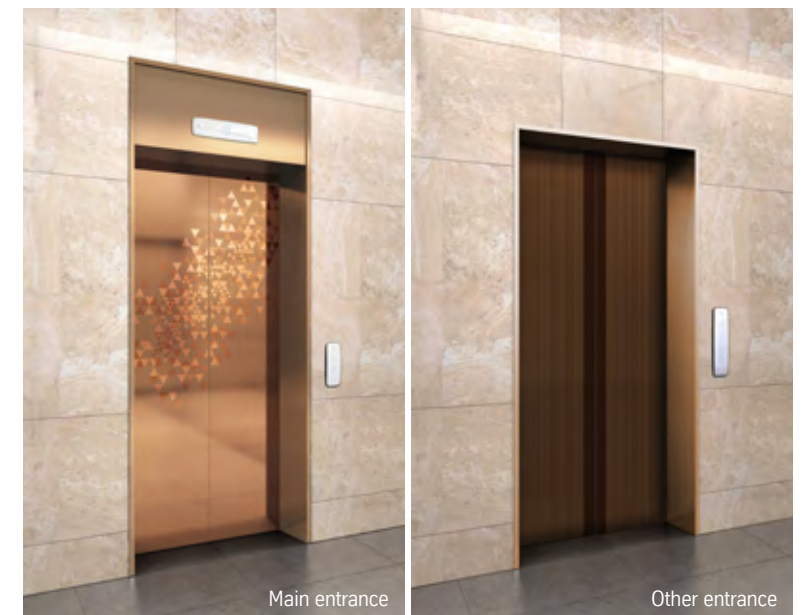


Front view

### Material features



Inspired by the Bellagio Hotel, three dimensional patterns in bronze and gold reflect the opulence of Las Vegas.



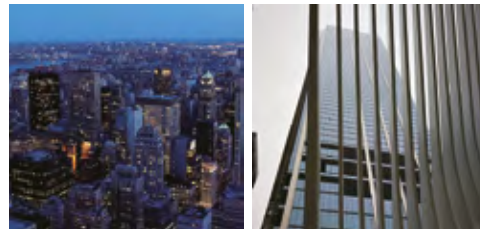
Main entrance

Other entrance



## Manhattan.

Sleek, dynamic and monochrome, the epitome of metropolitan style and success.



Rear view

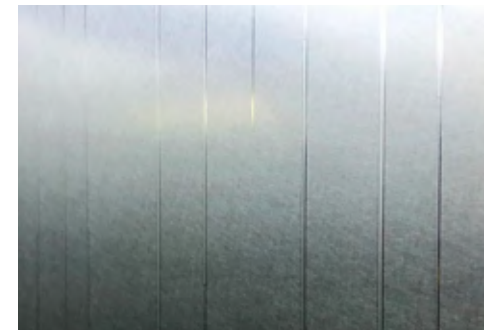
### Cabin design

Ceiling	GX-04
Wall	STS Mirror, Hi-Vib, Hi-Touch (Rain), Hi-Vib + Laser Graphic (LM-23V)
Door	STS mirror, Hi-Vib + Laser Cutting (LM-24V)
COP	DS-H-TK11NB HAS-H-TK11NB (for disabled)
Handrail	HRR-01G
Floor	Decotile (DTE2905)

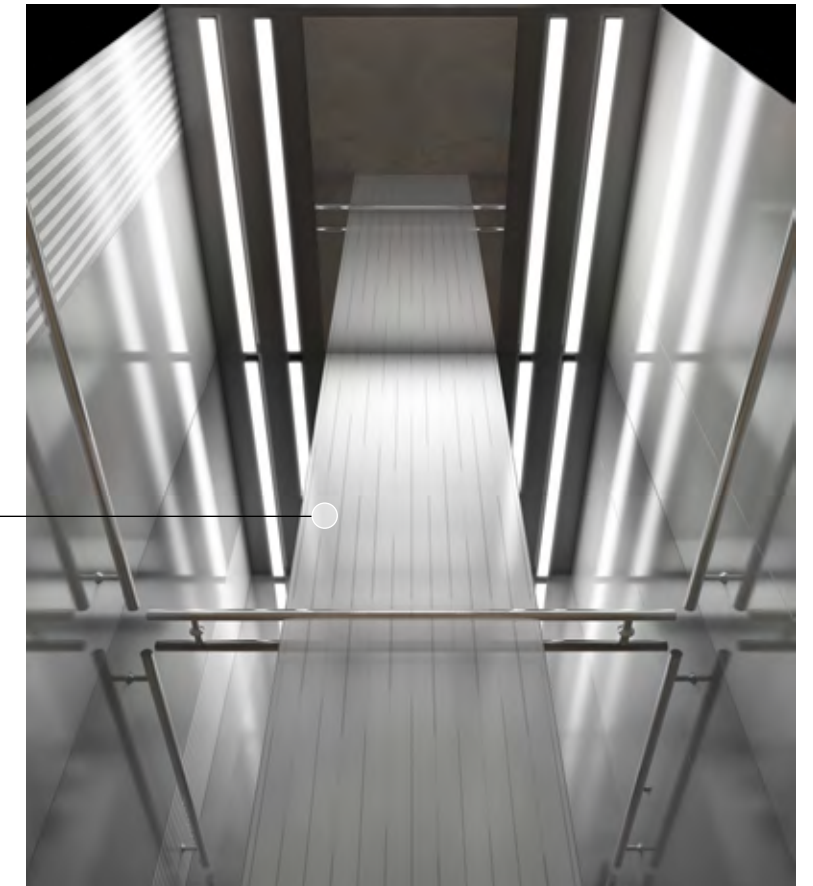


Front view

### Material features



Silver, mirrors and steel. Urban sensibility with a New York attitude.



Main entrance

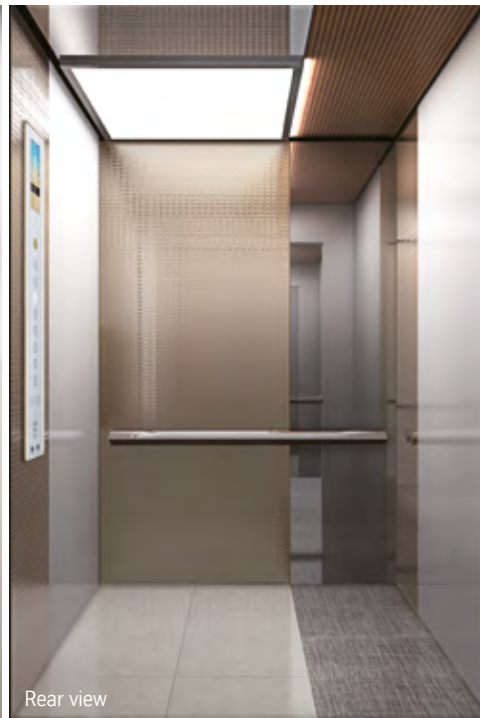


Other entrance



### Milano.

Taking inspiration from the capital of Italian style and design, calming textures and simple geometries beautifully combined.



Rear view

#### Cabin design

Ceiling	FX-01
Wall	STS Mirror, Hi-Vib, Hi Touch (Gold)
Door	STS Mirror, Hi-Vib, Bead + Laser cutting (LM-20VB)
COP	DS-F-TT22
Handrail	HRE-01E
Floor	Decotile (DTE2291, DTE2242)

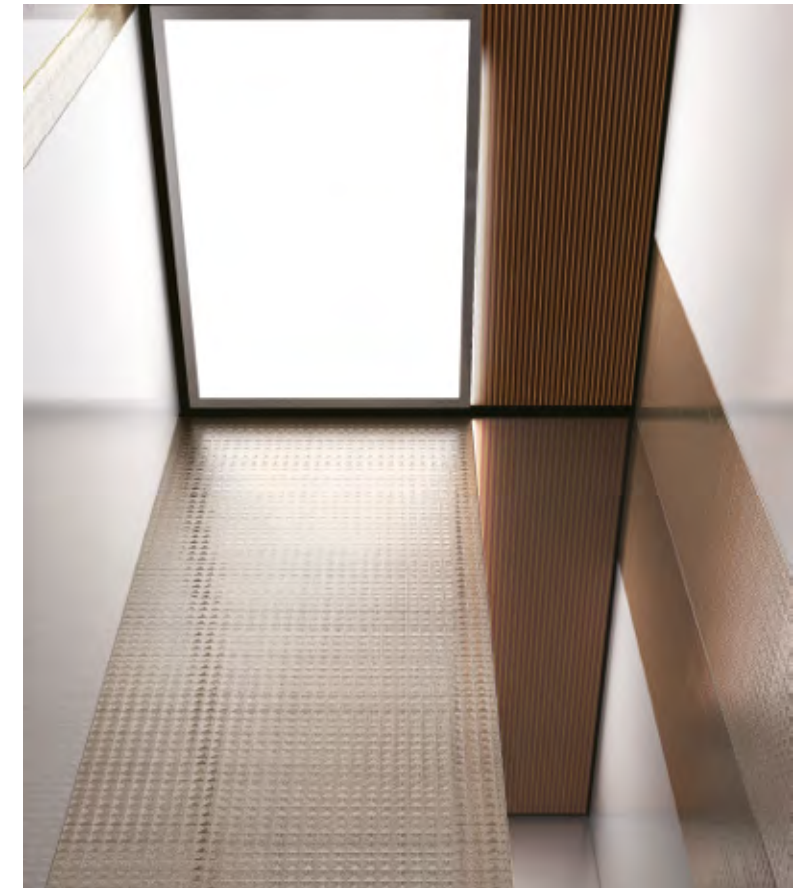


Front view

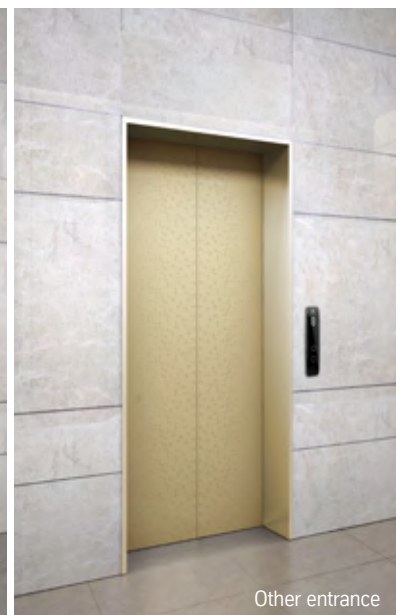
#### Material feature



Classic earth tones and patterns influenced by Mondrian.



Main entrance



Other entrance



# Underline your building's premium.

Beautifully crafted cabin options, inspiring fixtures and luxury materials combine to ensure that enta200 extends your building's premium into the elevator.



## Elegance that sets your building apart.

Slim fixtures with tactile and striking features include operating panels and indicators that integrate perfectly with contemporary and classic lobby designs.

## An infinite choice of hall door options.

Choose from 12 different hall or floor door patterns, each of which coordinates perfectly with our cabin designs; and match your building's interior design floor-by-floor.

## Hall door options.



### Firenze / Bellagio

Door	Main	Superteel (Bronze) + Laser graphic (ST-02BZ)
	Other	Silk metal (SP-02BR)
Transom		Supervib (Bronze)
Jamb	Main	Supervib (Bronze)
	Other	Supervib (Bronze)
LIOP	Main	BSM-TT44A
	Other	BSM-TT44AD
Indicator		HD-S-30D



### Inca

Door	Main	Silk metal (SP-03BR)
	Other	Silk metal (SP-03BR)
Transom		Supervib (Bronze)
Jamb	Main	Supervib (Bronze)
	Other	Supervib (Bronze)
LIOP	Main	BSK-TT44
	Other	BSK-TT44D
Indicator		HD-S-20D



### Hall door options.



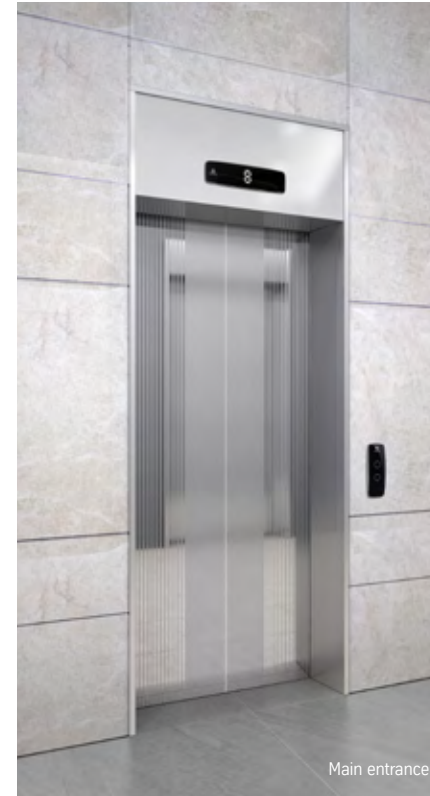
Main entrance



Other entrance

#### Venice

Door	Main	NFA-05
	Other	Texcoat (Navy) + 3d Embossing
Transom		Texcoat (Navy)
Jamb	Main	Supervib (Silver)
	Other	Supervib (Silver)
LIOP	Main	BSM-TT44A
	Other	BSM-TT44AD
Indicator		HD-S-30D



Main entrance



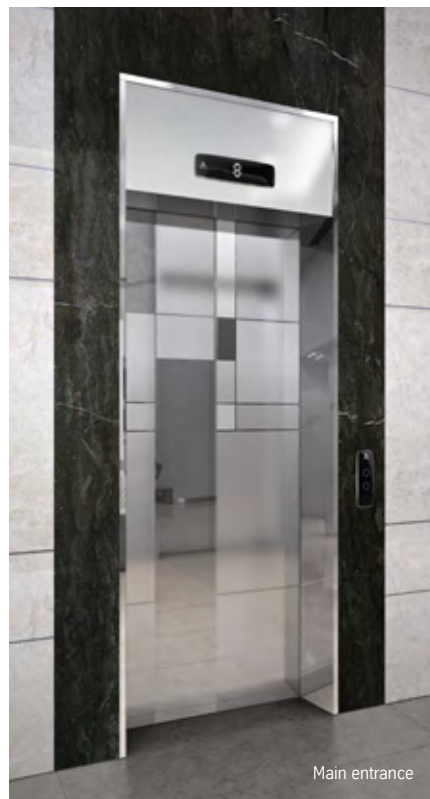
Other entrance

#### Manhattan

Door	Main	STS Mirror, Hi-Vib + Laser Cutting (LM-24V)
	Other	Texcoat (Silver) + 3d embossing
Transom		STS Mirror
Jamb	Main	Supervib (Silver)
	Other	Supervib (Silver)
LIOP	Main	BSK-TT44
	Other	BSK-TT44D
Indicator		HD-S-20D

#### Milano

Door	Main	STS Mirror, Hi-Vib + Laser Cutting (LM-20V)
	Other	Texcoat (Gold) + 3d embossing
Transom		Supervib (Silver)
Jamb	Main	Supervib (Silver)
	Other	Supervib (Gold)
LIOP	Main	BSK-TT44
	Other	BSK-TT44D
Indicator		HD-S-20D



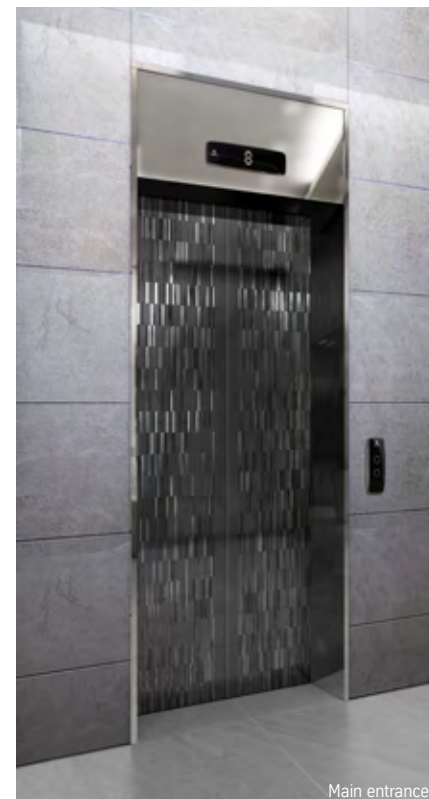
Main entrance



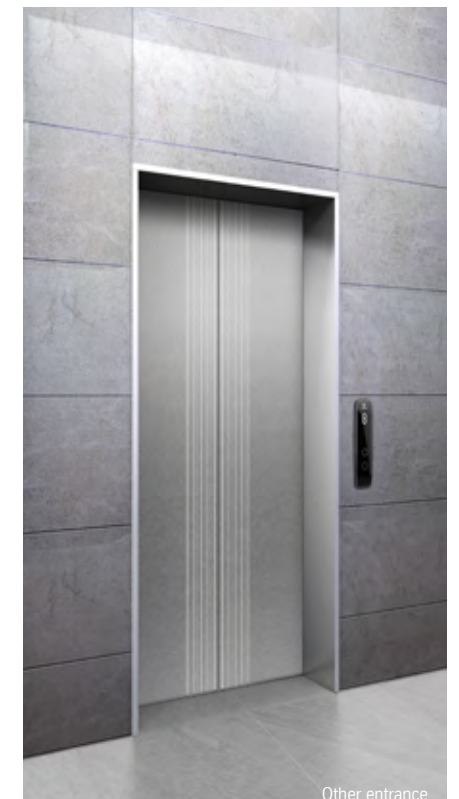
Other entrance

#### Optional doors

Door	Main	NFA-03
	Other	Supervib (Silver) + Laser Graphic (LM-09)
Transom		STS Mirror
Jamb	Main	Supervib (Silver)
	Other	Supervib (Silver)
LIOP	Main	BSK-TT44
	Other	BSK-TT44D
Indicator		HD-S-20D



Main entrance



Other entrance



# Travel in style.

With spacious cabins, smooth journeys and clear controls designed for low-rise buildings, all users travel in comfort and style.



## Total clarity and comfort.

With a focus on usability, the colorful LCD display makes the information easier to read.

The image moves in the direction of the elevator to give a reassuring 'visual sense' of movement.

## A comfortable atmosphere.

Not just a relaxing, stylish passenger environment, each enta200 cabin incorporates an integrated air conditioning and purification system.

## Easy boarding.

LED hall sills flash to indicate arrival and doors closing, supplementing hall lanterns and chimes for extra clarity. Intelligent in-car announcements are all fully adjustable to communicate cabin status clearly and calmly.

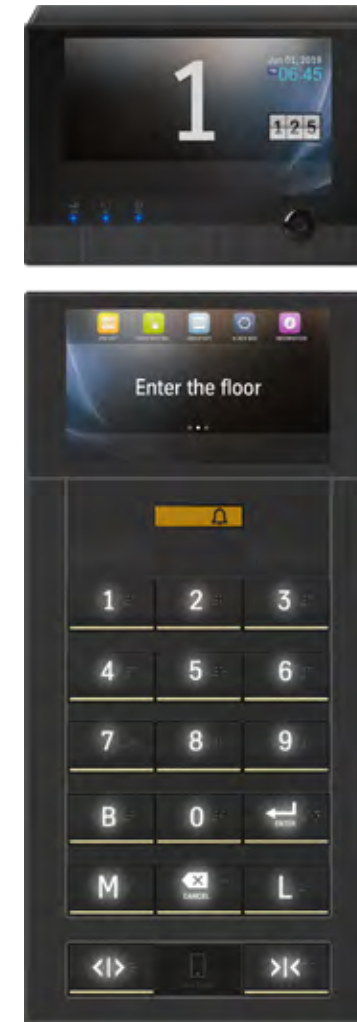


Scan to see hall sill

# Premium fixtures.

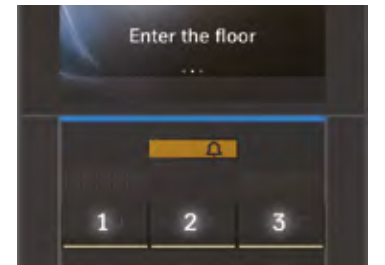
## Smart COP.

Our Smart COP brings the elevator ride to the next level. With innovative features and a premium design, it provides a stylish passenger experience.



### 10° Tilted screen

The 10° tilted screen limits reflections, so it's easier to read.



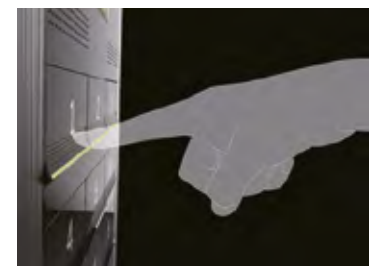
### Welcome light

When the doors are opening or closing, a blue welcome light blinks to alert the user.



### Two color buttons

The backlit keys turn blue when the destination is selected.



### Push type keyboard

Easy to use 10 digit push type keyboard.

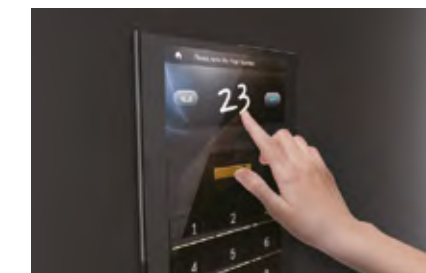
## Innovative features.

Built right into the Smart COP to give your passengers the best experience.



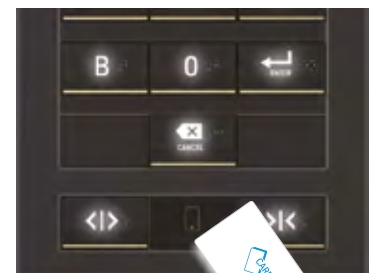
### Security

The embedded security camera with a 180 view of the cabin is accessible only to the building manager.



### Handwriting

Use your fingers to write your destination directly on the touch screen.



### RFID card reader

Use an RFID card or the contact-less feature to directly access your floor.



### Pioneering slim designs.

Unlike conventional flat fixture designs, these curved hall buttons have been meticulously designed to enhance the premium quality of any building. They deliver a superior user experience in terms of both look and feel.



Push type

Touch type



#### Design features



#### Slim look

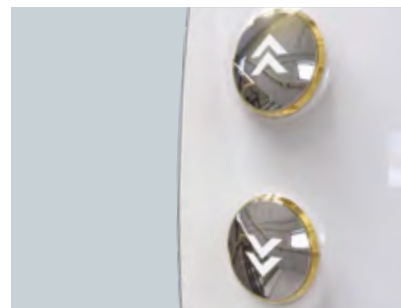
Designed for an enhanced sense of proportion.



UP/DOWN ICON

#### Touch button

Simplified UP/DOWN graphic design and state-of-the-art touch button in a constant-voltage system.



#### Push button

Rounded button design in stylish sapphire-white

### Slim LOP / LIOP with LCD display.



HD-S-30L



HD-S-20L



BSM-TK77GL

BSM-TT44AL



BSK-TK77BL

BSK-TT44L

### Slim LOP / LIOP with matrix display.



HD-S-30D



HD-S-20D

Push type



BSM-TK77G

Touch type



BSM-TK77GD

Touch type



BSM-TT44AD

Touch type



BSM-TT44A

Push type



BSK-TK77B

Touch type



BSK-TK77BD

Touch type



BSK-TT44D

Touch type



BSK-TT44



### Dynamic TFT LCD display.

Crystal clear, vibrant graphics put passengers at ease and guide them to their destination.



DS-F-TT22

DS-G-TK77G

DS-H-TK11NB



- Side lighting with LED illumination
- Dynamic LCD display support moving background when the elevator is moving
- High quality sound through snail-pattern speaker  
Microphone available



Scan to see dynamic LCD display

### COP assisting the disabled.



HAS-G-TK77G



HAS-H-TK11NB

### Push button LOP / LIOP.

This neat, rectangular design comes in smart black. Designed as a premium accent to any building.

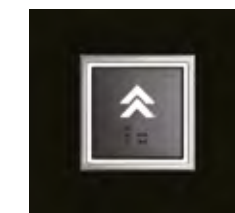


BSN-TK11NBD



BSN-TK11NB

Simple and classic design



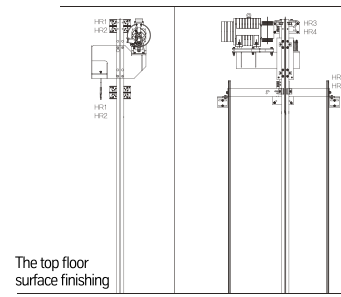
Standard Edge button



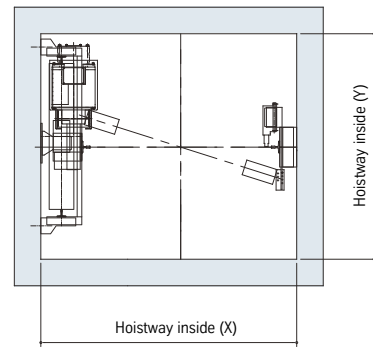


# Machineroom-less model.

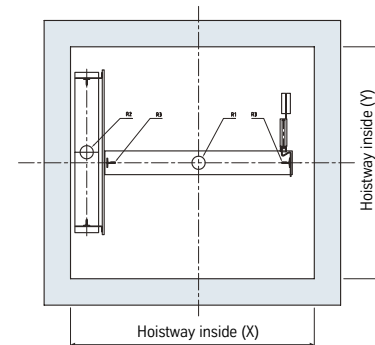
## Overhead Sections



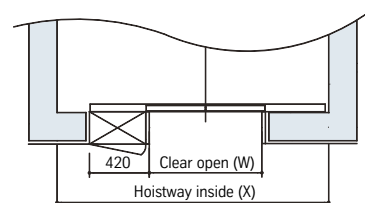
## Overhead Floor Plans



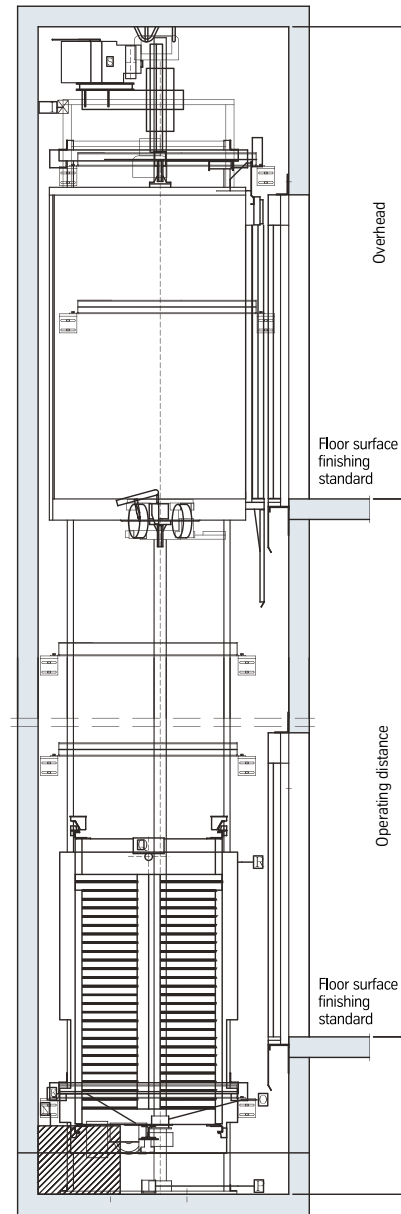
## Pit Floor Plans



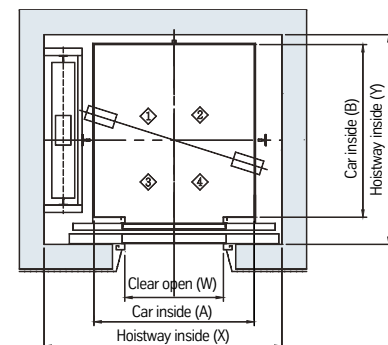
## Details Map of the Three-Sided Top Floor



## Hoistway Sections



## Hoistway Floor Plan



## Standard Size (Minimum Size) & Power Capacity

Speed (m/s)	Loading Capacity (kg)	Door Opening (mm)	Car Size (AxB)(mm)	CO Shaft Size (XxY)(mm)	2S Shaft Size (XxY)(mm)	Motor Capacity (kW)	MCCB Capacity (A)	Hook Application Load (kg)
1.00	320	700x2100	850x1000	1600x1450	1440x1510	2.8	20	1500
	450		1000x1200	1750x1550	1630x1610			
	550 a		1100x1250	1800x1560	1680x1620			
	550 b	1200x1180	1850x1540	1780x1600	4.0			
	630 a	800x2100	1100x1400	1800x1710		1680x1770		
	630 b		1200x1250	1850x1560		1780x1620		
	680		1200x1350	1850x1660	1780x1720			
	750 a	1300x1400	1930x1710	1910x1770	6.3			
	750 b	1200x1450	1850x1760	1780x1820				
	800	1350x1400	2080x1710	1960x1770				
	900	900x2100	1600x1350	2200x1660	-	8.0		
	1000 a		1600x1400	2200x1710	2210x1770			
1000 b (Deep car)	800x2100		1100x2100	1830x2410	1710x2500			
1150 a	1000x2100	1800x1450	2400x1760	-	8.3			
1150 b	900x2100	1600x1650	2200x1960	-				
1200 a	1000x2100	1800x1450	2400x1760	-				
1.50	1200 b	900x2100	1600x1650	2200x1960	-	40	3000	
	550 a	800x2100	1100x1250	1800x1560	1680x1620			
	550 b		1200x1180	1850x1540	1780x1600			
	630 a		1100x1400	1800x1710	1680x1770			
	630 b	1200x1250	1850x1560	1780x1620				
	680	1200x1350	1850x1660	1780x1720				
	750 a	1300x1400	1930x1710	1910x1770				
	750 b	1200x1450	1850x1760	1780x1820				
	800	1350x1400	2080x1710	1960x1770				
	900	900x2100	1600x1350	2200x1660	-			
	1000 a		1600x1400	2200x1710	2210x1770			
	1000 b (Deep car)		800x2100	1100x2100	1830x2410			1710x2500
1150 a	1000x2100	1800x1450	2400x1760	-				
1150 b	900x2100	1600x1650	2200x1960	-				
1200 a	1000x2100	1800x1450	2400x1760	-				
1200 b	900x2100	1600x1650	2200x1960	-				
	1000x2100	1600x1650	2300x1960	-				

Remark: These dimensions are valid for elevators following the EN81-20/50 code.

## Machine Beam Reaction Value & Pit Reaction Value

Loading Capacity (kg)	Gov-axis Capacity (Wall-horizontal Weight)	Gov-axis Capacity (Wall-vertical Weight)	TM-axis Capacity (Wall-horizontal Weight)	TM-axis Capacity (Wall-vertical Weight)	Car-axis Buffer Impulse Loading	CWT-axis Buffer Impulse Loading	Car-axis Impulse Loading at Emergent Stop	Guide Shoe Reaction	Guide Shoe Reaction
	HR1	HR2	HR3	HR4	R1	R2	R3	Fx	Fy
320					4430	3700	3500		
450					5230	4200	4000		
550 a					6100	4750	4520	88	90
550 b					6150	4790	4550		
630 a					6610	5070	4860		
630 b					6610	5070	4860		
680	650	300	1250	750	7290	5630	5320		
750 a					7790	5970	5740		
750 b					7670	5850	5650		
800					8460	6530	6180	175	225
900					9640	7470	6930		
1000 a					10140	7750	7220		
1000 b (Deep car)					10140	7750	7220		
1150 a	800	450	1500	900	10770	8030	7550	215	260
1150 b					10980	8120	7660		
1200 a									

## Overhead & Pit

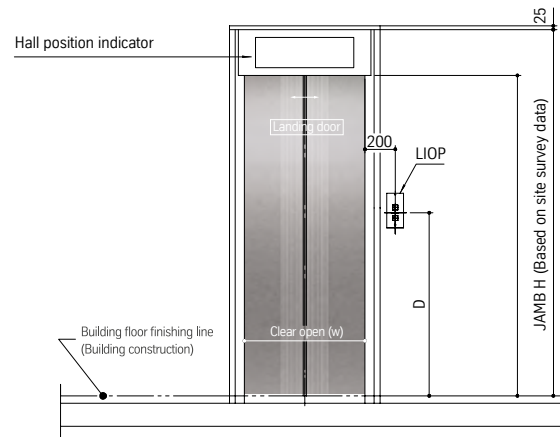
Speed (m/s)	Overhead* (mm)		Pit (mm)
	Below 1000kg	Exceed 1000kg	
1.00	3800	3900	1150
1.50	3900	4000	1500

\* The overhead size needs to be adjusted when an air-conditioner is added to the car.  
Remark: Marble floor and air-conditioner cannot be installed at the same time due to load limit.

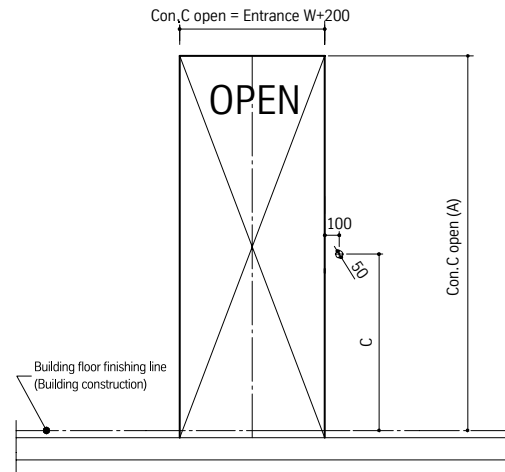


# Entrance.

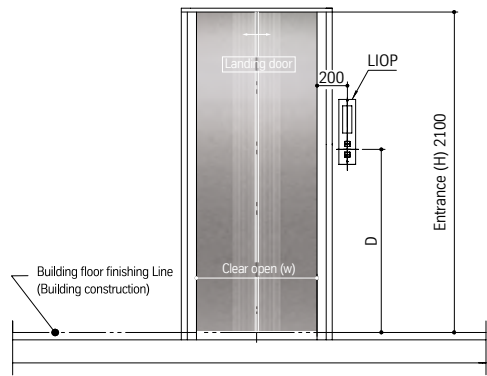
Main Entrance (with Transom)



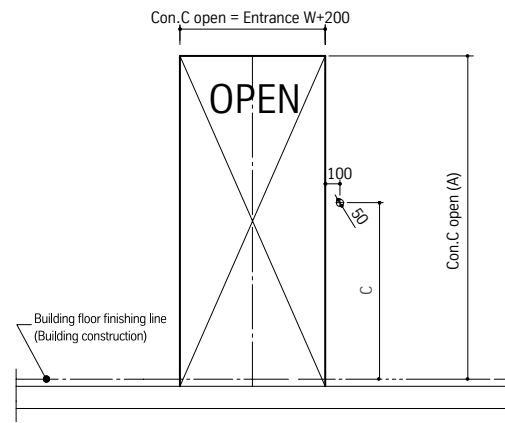
Structural Opening (with Transom)



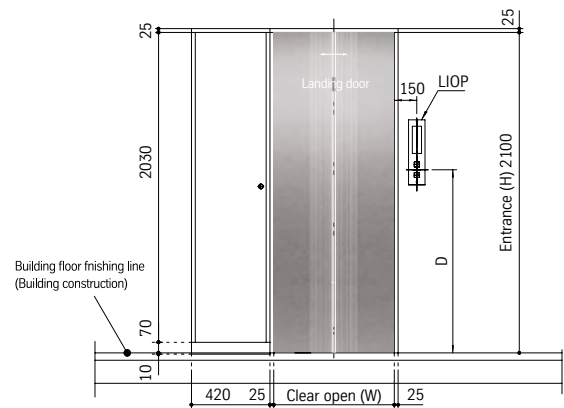
Other Entrance (without Transom)



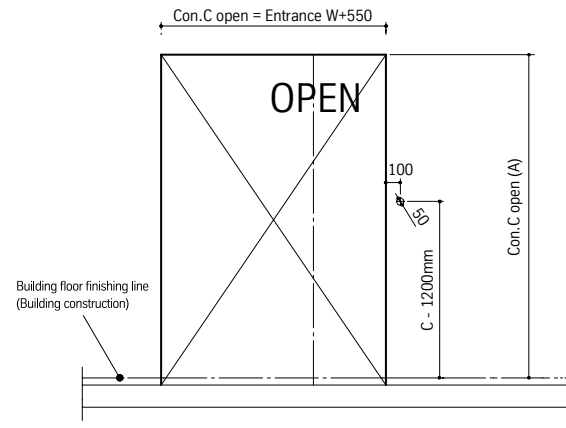
Structural Opening (without Transom)



Entrance (Top Floor) with Control Panel



Structural Opening (Top Floor)



	with Transom	without Transom	For the Disabled
Opening area height (A)	2500mm	2200mm	-

1,200,000  
elevators and escalators under maintenance

Customers in  
**100+**  
countries

**50,000+**  
employees

Your  
innovation  
partner.

Our mission is to make cities the best ever places to live by being the driving force of an industry that moves more than 1 billion people every day.

Learn more about us online.



1,000+  
locations

**24/7**  
service available  
for customers

**24,000+**  
service technicians