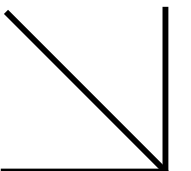


enta200
STEP INTO
MOMENTS OF
STYLE



TK ELEVATOR
MOVES PEOPLE -
THE FUTURE OF
URBAN MOBILITY





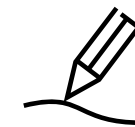
enta200 step into moments of style

With its compact size, enta200 is a machineroom-less elevator suited to low-rise in mid- to high-end residential buildings. It offers stylish car interior designs to give its passengers a comfortable ride.



Increase your returns

High performance and German engineering make enta200 a great investment.



Underline your building's premium

Trend-based interiors to match your building's style and extend the building's vibe into the elevator.



Provide a stylish experience

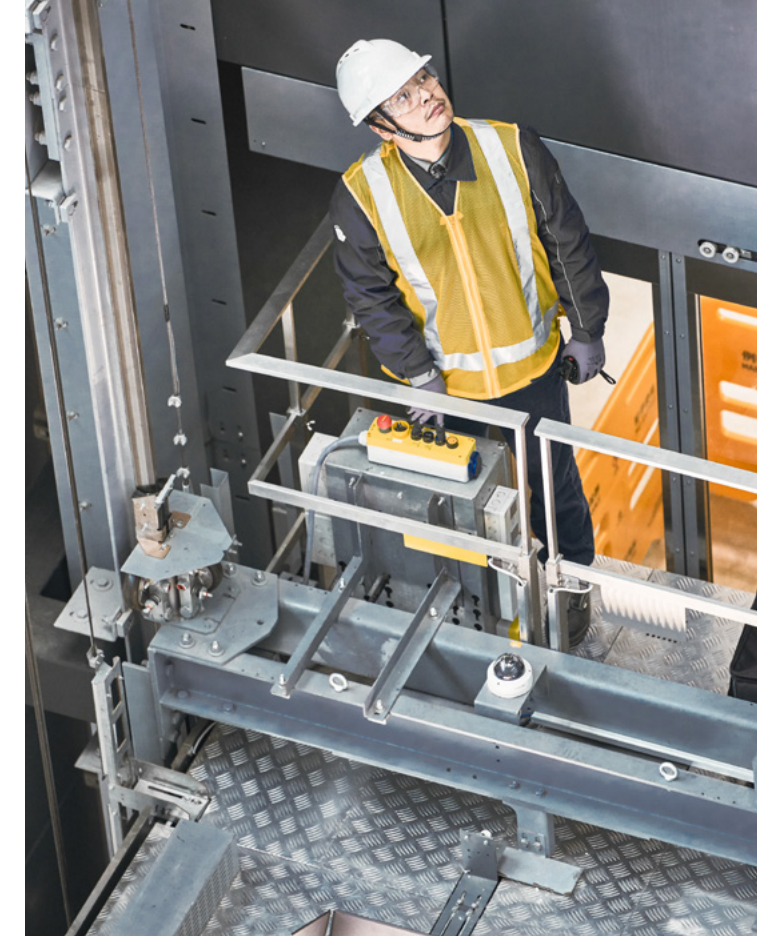
With a focus on usability and overall ride comfort, enta200 ensures you travel in comfort and style.

DESIGNED FOR

- Low-rise residential and villas

SPECIFICATIONS

- Max. travel height: $\leq 45\text{m}$
- Max. number of floors: ≤ 15
- Rated load: 630kg
- Rated speed: 0.50m/s - 1.00m/s



Strict design criteria conform to international standards

Designed, tested and manufactured to TK Elevator's stringent standards, enta200 conforms to the international GB or EN code for commercial elevators, which also apply to residential applications.

Increase your returns

Market-leading innovations and German precision-engineering make every enta200 an investment that will enhance your building's value.

Reduced shaft size means more leasable floorspace

enta200 machineroom-less (MRL) concept uses a robust, non-shell design which is small and light. It only requires a simple overhead structure and frees up the space traditionally occupied by a machine room. This design also maximizes the full height of the shaft, providing for taller cabins. Flexible cabin dimensions optimize volume within the confines of existing shafts.



Underline your building's premium

With cabins inspired by the latest interior design trends, you can extend your building's vibe into the elevator.



Designs to match your building's style

Our team of experienced designers has studied the latest trends to bring you a range of premium quality cabins that will underline your commitment to style and your building's premium. Using high-end materials, we offer a range of finishes, color coatings, mirror finish and etched stainless steel.

Enhanced safety and security systems

Should power fail, the Automatic Rescue Device (ARD) releases passengers on the nearest floor for immediate exit. Our voice calm-down function will be activated to keep passengers notified and reduce their stress.



STYLISH

Stylish interior design with a touch of luxury.



CLASSY LUXE



- Ceiling
S1-C1
- Rear Wall
Quilted artificial leather + Hairline finish stainless steel with champagne gold coating trim + Mirror finish stainless steel
- Side Wall
Hairline finish stainless steel with champagne gold coating + Mirror finish stainless steel
- Front Wall / Car Door
Hairline finish stainless steel with champagne gold coating
- Floor
TB8937

Handrail
HRA1



COP
CH2B-D23-1
Stainless steel

HERITAGE REFINED

Revival of colors, crafts and materials from the past with today's conveniences.



ELEGANT LUXE



- Ceiling
S1-C1
- Rear Wall
Film on metal + Mirror finish stainless steel with champagne gold coating
- Side Wall
Vibratory finish stainless steel with champagne gold coating + Mirror finish stainless steel with champagne gold coating
- Front Wall / Car Door
Vibratory finish stainless steel with champagne gold coating
- Floor
TB8937

Handrail
HRA1



COP
CH2A-A11-1
Stainless steel

CONTEMPORARY

Minimalistic interior design,
influenced by local taste.



STYLISH HOME



- Ceiling
S3-C2
- Rear Wall
Etched hairline finish stainless steel +
Mirror finish stainless steel
- Side Wall
Hairline finish stainless finish +
Mirror finish stainless steel
- Front Wall / Car Door
Hairline finish stainless steel
- Floor
TB6013



COP
CH2A-A11-1
Stainless steel

NATURAL HOME

A cosy, warm and comfortable interior
setting, created using natural textures.



FLORAL HOME



- Ceiling
S3-C2
- Rear Wall
Etched mirror finish stainless steel +
Mirror finish stainless steel
- Side Wall
Hairline finish stainless steel with champagne gold coating +
Mirror finish stainless steel
- Front Wall / Car Door
Hairline finish stainless steel
- Floor
TB6013



COP
CH2B-D23-1
Stainless steel

Provide a stylish experience

With a strong focus on usability, cabin atmosphere and overall ride comfort, enta200 ensures users travel in comfort and style.



Clean atmosphere

Powerful air-conditioning and air-purifying keep the atmosphere cool and the air fresh.

Harmonious lighting

Soft lighting creates a relaxed and pleasant atmosphere, and maintains a comfortable color temperature.

Clear cabin sounds

Intelligent car arrival chime with adjustable sound effects and volume.





DESIGNED FOR THE ENTRANCE

Extend your building's vibe into the elevator with premium features including a selection of hall lanterns, doors and control panels.

Hall lantern



HL101



HL102



HL103



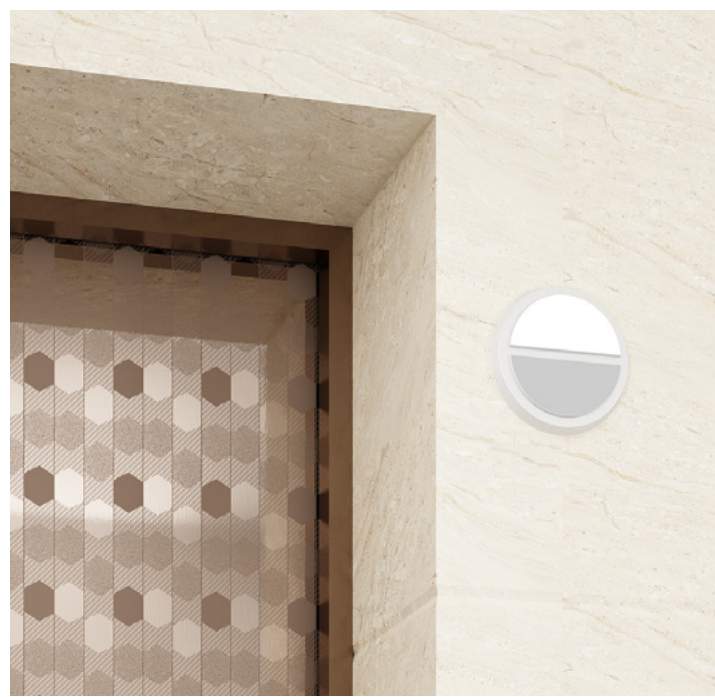
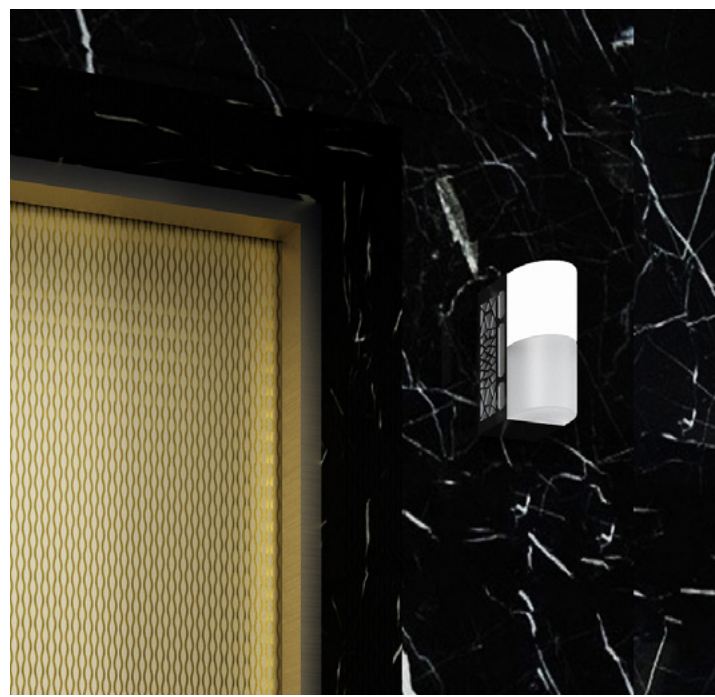
HL104



HL109

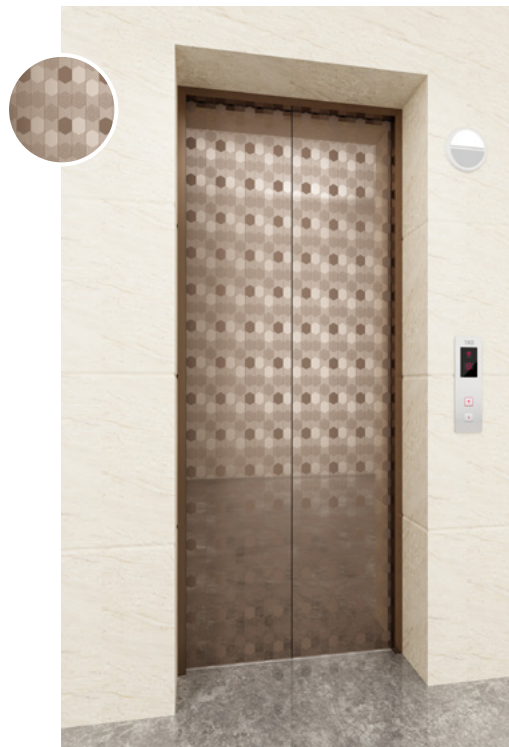


HL107



Hall door

Door designs to complement your lobby and halls.



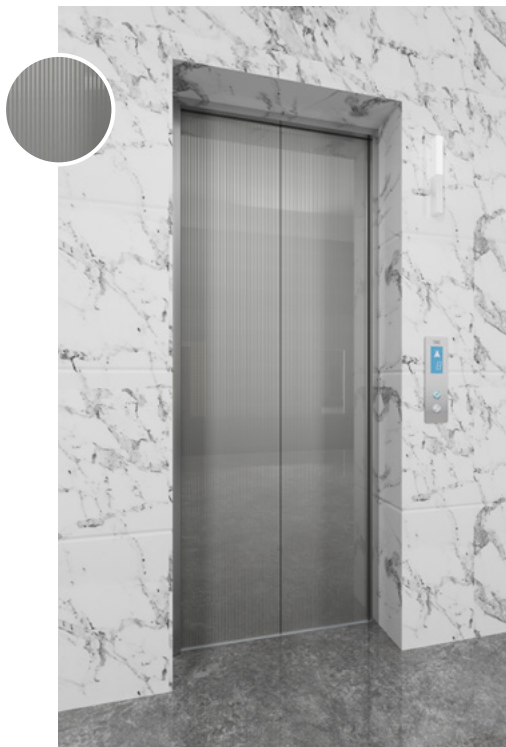
Etched hairline finish with bronze coating P026-EM-BR



Etched hairline finish with rose gold coating P028-EH-TR



Etched hairline finish P036-EH



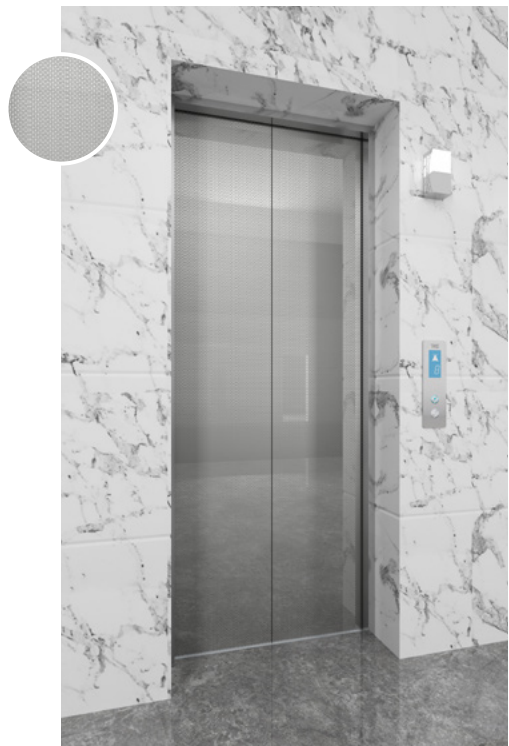
Etched mirror finish P009-EM



Etched hairline finish with titanium coating P014-EM-TG



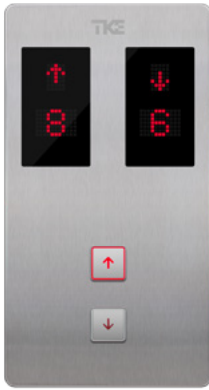
Etched hairline finish with titanium coating P027-EH-TG



Etched mirror finish P022-EM

COP / LOP

User-friendly designs for ease of use.



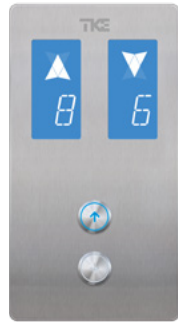
CLASSIC

Panel	Stainless steel
Indicator	Red dot matrix
Button	Square button with red light



BLACK

Panel	Stainless steel
Indicator	Red dot matrix
Button	Square button with red light



WHITE

Panel	Stainless steel
Indicator	Blue white segment LCD
Button	Round button with blue light

YOUR INNOVATION PARTNER

elevators and escalators in service

1,200,000

countries serviced

100+

employees

50,000+

service available for customers

24/7

locations

1,000+

service technicians

24,000+



WWW.TKELEVATOR.COM

FUNCTION LIST



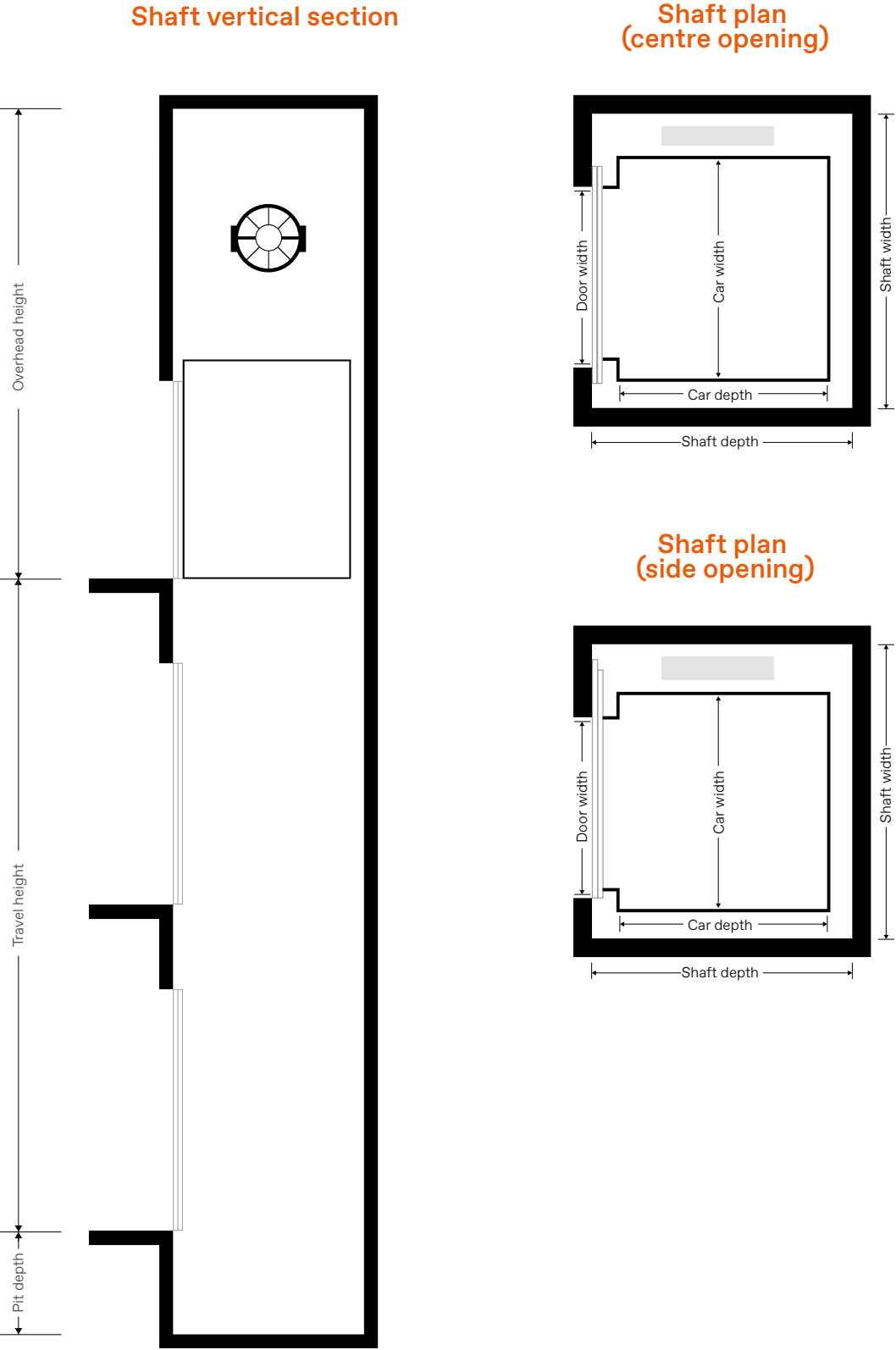
CATEGORY	NO.	FUNCTION	STANDARD / OPTION
Enhanced Car Functions	1	Door reopen by following landing call at same landing	S
	2	Collective selective control	S
	3	Full-load non-stop	S
	4	Onward travel to the next stop in the case of a non-opening door	S
	5	Anti-nuisance "limit number of car call when empty load"	S
	6	Anti-nuisance "car call cancellation at terminal landing"	S
	7	Anti-nuisance "car call deletion opposite to travel direction"	S
	8	Adjustable waiting time for opening door at the main landing	S
	9	Adjustable speed and torque of door operator	S
	10	Re-leveling	S
	11	Energy saving operation for car light and fan	S
	12	Elevator start-up loading weighting compensation function	S
	13	In advance door open	O
	14	Changing fire landing	O
	15	Changing parking landing	O
	16	Changing main landing	O
	17	Main landing return	O
	18	Door nudging	O
Safety and Emergency Functions	19	Landing to the nearest floor in case of problem (e.g. motor overheat, car position missing)	S
	20	Fire emergency return (FER)	S
	21	Alarm button & intercom button	S
	22	Emergency car lighting	S
	23	Overload protect	S
	24	Repeat door closing in the event of lock failure	S
	25	Door overload protect	S
	26	Safety curtain for door	S
	27	Parking (by key switch)	S
	28	Phase failure and phase reversal protection	S
	29	Lockable main switch integrated for controller cabinet	S
	30	Emergency electrical operation	S
	31	Inspection operation	S
	32	Traction machine overheat supervision	S
	33	Traction machine skidding protection	S
	34	Prepared fire emergency return signal	S
	35	Unintended car movement protection	S
	36	Restrict the opening of the car door inside the car	S
	37	Brake torque detection function	S
	38	Door lock safety device failure detection	S
	39	Emergency operation for electrical brake release	S
	40	Main COP attendance	O
	41	Fireman service	O
	42	Door lock bypass function	S

FUNCTION LIST



CATEGORY	NO.	FUNCTION	STANDARD / OPTION
Safety and Emergency Functions	43	Automatic rescue operation	O
	44	Earthquake function (sensors by customer)	O
	45	Earthquake function (include sensors)	O
	46	Emergency power operation (generator by customer)	O
	47	Top of car emergency exit	O
	48	3D safety curtain	O
Trip Functions	49	Automatic doors	S
	50	Collective fault signal	S
	51	Operation counter (trip and hour)	S
	52	Car priority	O
	53	Special trip (landing priority) by key switch	O
	54	Card reader operate car call (instead of push button)	O
Human Machine Interface	55	Door close button	S
	56	Door open button	S
	57	Car call cancellation (by double press)	S
	58	Landing indicator of dot-matrix (red)	S
	59	Car indicator of dot-matrix (red)	S
	60	Landing indicator of 4.3" blue-white segment LCD	O
	61	Car indicator of 5.7" blue-white segment LCD	O
	62	Car arrival chime	O
	63	Landing arrival chime	O
	64	Speech synthesis service	O
	65	Second COP (exclude car attendant and intercom)	O
	66	COP for disabled persons (no indicator, braille push buttons as standard)	O
Monitoring and Tele-Service	67	Intercom system	S
	68	Travelling cable (include video transmission function)	O
	69	BAS interdace function (dry contactor signal)	O
	70	Color video camera (in car)	O
	71	Remote monitor interfacing (exclude MH2 board)	O
	72	Remote monitor interfacing (include MH2 board, without modem)	O
	73	Supervision panel (cable by other, cable length ≤150m)	O
	74	Build automation interfacing (RS232, MM board)	O
	75	Build automation interfacing (RS485, MMC board)	O
	76	Lift Monitoring system (exclude computer & printer)	O
Group/Duplex Control	77	Group control (max. 8 units)	O
	78	Continued group/duplex operation in case of failure of the other elevator	O
	79	Peak service function (only for group control)	O
	80	Taking units out of group (timer/switch)	O

* S - Standard; O - Option



RATED LOAD (KG)	RATED SPEED (M/S)	MAX. NUMBER OF FLOORS	MAX. TRAVEL HEIGHT (M)	CENTRE OPENING DOOR SIZE (DW × DH) (MM)	CAR SIZE (CW × CD) (MM)	SHAFT SIZE (SW × SD) (MM)
320	0.5	5	15	700 × 2100	850 × 1100	1620 × 1500
	1.0	15	45			
400	0.5	5	15	800 × 2100	1000 × 1100	1830 × 1500
	1.0	15	45			
450	0.5	5	15	800 × 2100	1100 × 1100	1870 × 1500
	1.0	15	45			
630	0.5	5	15	800 × 2100	1100 × 1400	1870 × 1800
	1.0	15	45			

RATED LOAD (KG)	RATED SPEED (M/S)	MAX. NUMBER OF FLOORS	MAX. TRAVEL HEIGHT (M)	SIDE OPENING DOOR SIZE (DW × DH) (MM)	CAR SIZE (CW × CD) (MM)	SHAFT SIZE (SW × SD) (MM)
320	0.5	5	15	700 × 2100	850 × 1100	1500 × 1560
	1.0	15	45			
400	0.5	5	15	800 × 2100	1000 × 1100	1680 × 1560
	1.0	15	45			
450	0.5	5	15	800 × 2100	1100 × 1100	1750 × 1560
	1.0	15	45			
630	0.5	5	15	800 × 2100	1100 × 1400	1750 × 1860
	1.0	15	45			

* The standard car height is 2200mm. 2300mm / 2400mm / 2500mm / 2600mm options are available.

Overhead height & pit depth

RATED LOAD (KG)	CAR SIZE (CW X CD)(MM)	OVERHEAD HEIGHT (MM)	PIT DEPTH (MM)
320 - 630kg	2200-2300	3700	1200
	2400	3800	
	2500	3900	
	2600	4000	

FUNCTION LIST



CATEGORY	NO.	FUNCTION	STANDARD / OPTION
Enhanced Car Functions	1	Door reopen by following landing call at same landing	S
	2	Collective selective control	S
	3	Full-load non-stop	S
	4	Onward travel to the next stop in the case of a non-opening door	S
	5	Anti-nuisance "limit number of car call when empty load"	S
	6	Anti-nuisance "car call cancellation at terminal landing"	S
	7	Anti-nuisance "car call deletion opposite to travel direction"	S
	8	Adjustable waiting time for opening door at the main landing	S
	9	Adjustable speed and torque of door operator	S
	10	Re-leveling	S
	11	Energy saving operation for car light and fan	S
	12	Elevator start-up loading weighting compensation function	S
	13	In advance door open	O
	14	Changing fire landing	O
	15	Changing parking landing	O
	16	Changing main landing	O
	17	Main landing return	O
	18	Door nudging	S
Safety and Emergency Functions	19	Landing to the nearest floor in case of problem (e.g. motor overheat, car position missing)	S
	20	Fire emergency return (FER)	S
	21	Alarm button & intercom button	S
	22	Emergency car lighting	S
	23	Overload protect	S
	24	Repeat door closing in the event of lock failure	S
	25	Door overload protect	S
	26	Safety curtain for door	S
	27	Parking (by key switch)	S
	28	Phase failure and phase reversal protection	S
	29	Lockable main switch integrated for controller cabinet	S
	30	Emergency electrical operation	S
	31	Inspection operation	S
	32	Traction machine overheat supervision	S
	33	Traction machine skidding protection	S
	34	Prepared fire emergency return signal	S
	35	Unintended car movement protection	S
	36	Restrict the opening of the car door inside the car	S
	37	Brake torque detection function	S
	38	Door lock safety device failure detection	S
	39	Emergency operation for electrical brake release	S
	40	Main COP attendance	O
	41	Fireman service	O
	42	Door lock bypass function	S

FUNCTION LIST

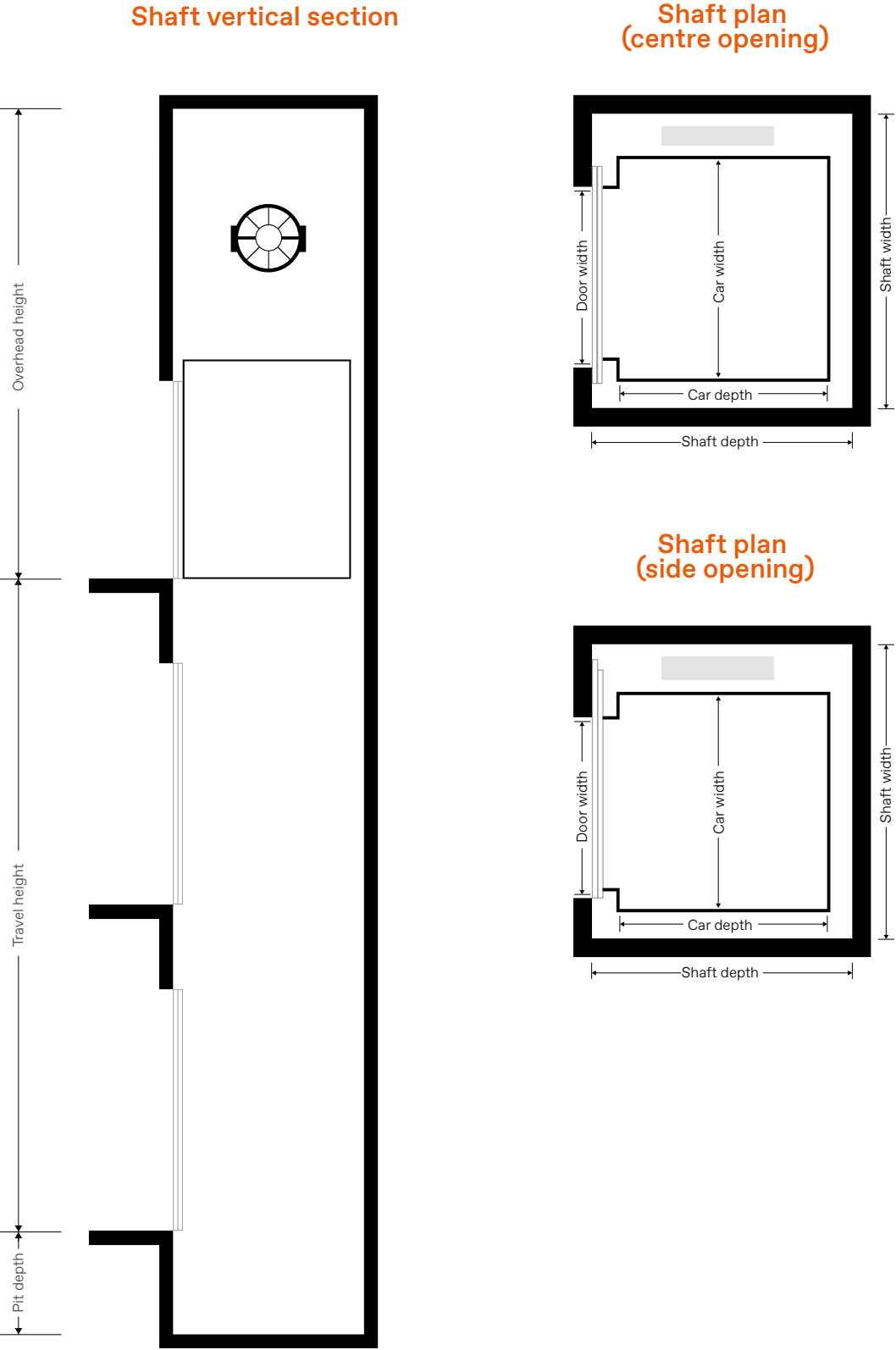


CATEGORY	NO.	FUNCTION	STANDARD / OPTION
Safety and Emergency Functions	43	Automatic rescue operation	O
	44	Earthquake function (sensors by customer)	O
	45	Earthquake function (include sensors)	O
	46	Emergency power operation (generator by customer)	O
	47	Top of car emergency exit	S
	48	Residual current devices function (RCD function)	S
	49	3D safety curtain	O
Trip Functions	50	Automatic doors	S
	51	Collective fault signal	S
	52	Operation counter (trip and hour)	S
	53	Car priority	O
	54	Special trip (landing priority) by key switch	O
	55	Card reader operate car call (instead of push button)	O
Human Machine Interface	56	Door close button	S
	57	Door open button	S
	58	Car call cancellation (by double press)	S
	59	Landing indicator of dot-matrix (red)	S
	60	Car indicator of dot-matrix (red)	S
	61	Landing indicator of 4.3" blue-white segment LCD	O
	62	Car indicator of 5.7" blue-white segment LCD	O
	63	Car arrival chime	O
	64	Landing arrival chime	O
	65	Speech synthesis service	O
Monitoring and Tele-Service	66	Second COP (exclude car attendant and intercom)	O
	67	COP for disabled persons (no indicator, braille push buttons as standard)	O
	68	Intercom system	S
	69	Travelling cable (include video transmission function)	O
	70	BAS interdace function (dry contactor signal)	O
	71	Color video camera (in car)	O
	72	Remote monitor interfacing (exclude MH2 board)	O
	73	Remote monitor interfacing (include MH2 board, without modem)	O
	74	Supervision panel (cable by other, cable length ≤150m)	O
	75	Build automation interfacing (RS232, MM board)	O
Group/Duplex Control	76	Build automation interfacing (RS485, MMC board)	O
	77	Lift Monitoring system (exclude computer & printer)	O
	78	Group control (max. 8 units)	O
	79	Continued group/duplex operation in case of failure of the other elevator	O
	80	Peak service function (only for group control)	O
	81	Taking units out of group (timer/switch)	O

* S - Standard; O - Option

enta200 (EN CODE)

LAYOUT



enta200 (EN CODE)

TECHNICAL SPECIFICATIONS



RATED LOAD (KG)	RATED SPEED (M/S)	MAX. NUMBER OF FLOORS	MAX. TRAVEL HEIGHT (M)	CENTRE OPENING DOOR SIZE (DW × DH) (MM)	CAR SIZE (CW × CD) (MM)	SHAFT SIZE (SW × SD) (MM)
320	0.5	5	15	700 × 2100	850 × 1100	1620 × 1500
	1.0	15	45			
400	0.5	5	15	800 × 2100	1000 × 1100	1830 × 1500
	1.0	15	45			
450	0.5	5	15	800 × 2100	1100 × 1100	1870 × 1500
	1.0	15	45			
630	0.5	5	15	800 × 2100	1100 × 1400	1870 × 1800
	1.0	15	45			

RATED LOAD (KG)	RATED SPEED (M/S)	MAX. NUMBER OF FLOORS	MAX. TRAVEL HEIGHT (M)	SIDE OPENING DOOR SIZE (DW × DH) (MM)	CAR SIZE (CW × CD) (MM)	SHAFT SIZE (SW × SD) (MM)
350	0.5	5	15	700 × 2100	850 × 1100	1500 × 1560
	1.0	15	45			
400	0.5	5	15	800 × 2100	1000 × 1100	1680 × 1560
	1.0	15	45			
450	0.5	5	15	800 × 2100	1100 × 1100	1750 × 1560
	1.0	15	45			
630	0.5	5	15	800 × 2100	1100 × 1400	1750 × 1860
	1.0	15	45			

* The standard car height is 2200mm. 2300mm / 2400mm / 2500mm / 2600mm options are available.

Overhead height & pit depth

RATED LOAD (KG)	CAR SIZE (CW X CD)(MM)	OVERHEAD HEIGHT (MM)	PIT DEPTH (MM)
320 - 350kg	2200	4850	1700
	2300	4950	
	2400	5050	
	2500	5150	
	2600	5250	
400 - 630kg	2200	3950	1200
	2300	4050	
	2400	4150	
	2500	4250	
	2600	4350	