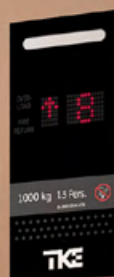
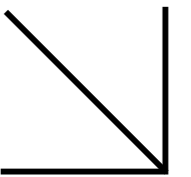


meta200
SENSE THE
DIFFERENCE



TK ELEVATOR
MOVES PEOPLE -
THE FUTURE OF
URBAN MOBILITY





meta200 sense the difference

meta200 targets mid-rise buildings in the residential and commercial sectors, where design and performance matter. Offering inspiring designs and German quality engineering, meta200 brings an all round premium experience to your building.



Increase your returns

High performance German engineering makes meta200 a great investment.



Underline your building's premium

Trend-based interiors to match your building's style and extend the building's vibe into the elevator.



Provide a stylish experience

With a focus on usability and overall ride comfort, meta200 ensures you travel in comfort and style.

DESIGNED FOR

- Mid-rise residential and commercial buildings

SPECIFICATIONS

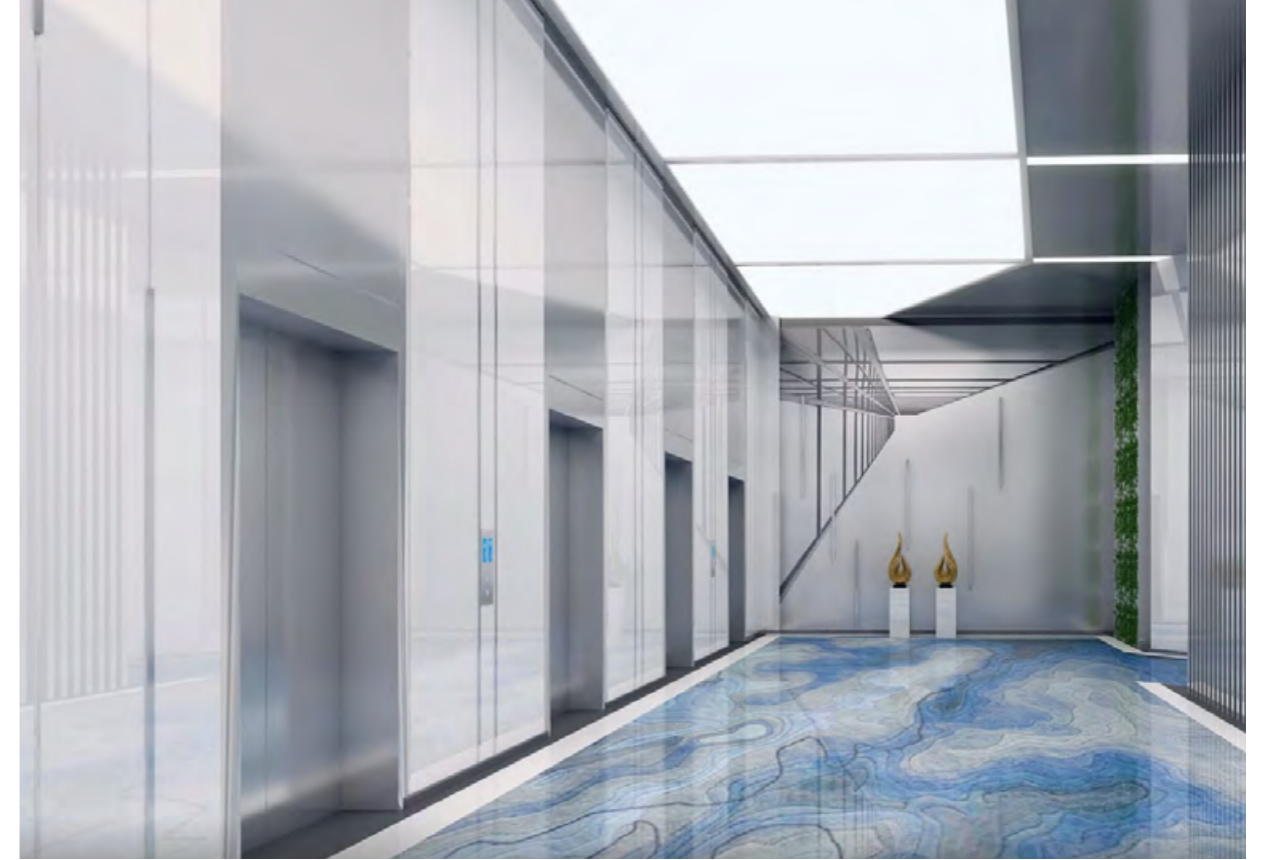
- Max. travel height: $\leq 150\text{m}$
- Max. number of floors: ≤ 40
- Rated load: 1,600kg
- Rated speed: $\leq 3.0\text{m/s}$

Increase your returns

Named as one of the World's Top 50 Most Innovative Companies, TK Elevator's advanced engineering leads the elevator industry.

Quality that will enhance your building's value

With a long history of expertise and market-leading innovations, TK Elevator has grown to become one of the world's principal elevator companies. Our success is built on German precision engineering, stringent processes and strict international code compliance, so that TKE will enhance any building's value.



Specifications to meet your buildings needs

meta200 fits a wide variety of applications, meeting the needs of mid-rise buildings across all segments from office, retail, malls and residential. With MR solutions up to 1600kg at 3m/s and MRL solutions up to 1600kg at 2m/s, our elevators are equipped with a wide array of features to meet project demands.



Underline your building's premium

With cabins based on the latest interior design trends, you can extend your building's vibe into the elevator.



Designs to match your building's style

Our team of experienced designers has studied the latest trends to bring you a range of premium quality cabins that will underline your commitment to style and your building's premium. Using high-end materials, we offer a range of finishes, color coatings, mirror finish and etched stainless steel.

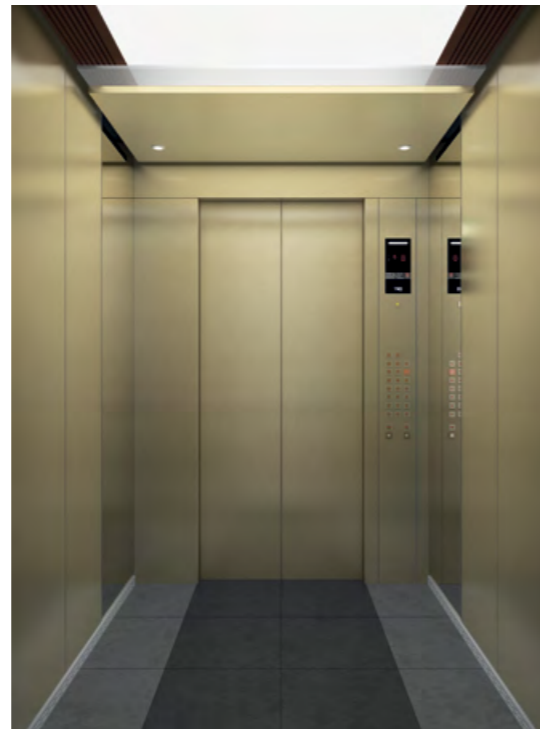
Enhanced safety and security systems

Should power fail, the Automatic Rescue Device (ARD) releases passengers on the nearest floor for immediate exit. Our in-car camera helps property management to monitor the situation and our voice calm-down function will be activated to keep passengers notified and reduce their stress.



STYLISH

Stylish interior design with a touch of luxury.



CLASSY LUXE



- Ceiling**
S1-C1
- Rear Wall**
Artificial marble with mirror finish stainless steel trim + Vibratory finish stainless steel with champagne gold coating
- Side Wall**
Vibratory finish stainless steel with champagne gold coating + Mirror finish stainless steel
- Front Wall / Car Door**
Vibratory finish stainless steel with champagne gold coating
- Floor**
TB8937 + TB6013



Handrail
TRH01



COP
CF3A-A11
Hairline finish stainless steel with champagne gold coating

SUBTLE LUXE



- Ceiling**
S1-C1
- Rear Wall**
Etched mirror finish stainless steel + Hairline finish stainless steel
- Side Wall**
Film on metal + Sandblast finish stainless steel with champagne gold coating
- Front Wall / Car Door**
Sandblast finish stainless steel with champagne gold coating
- Floor**
TB8937 + TB6013



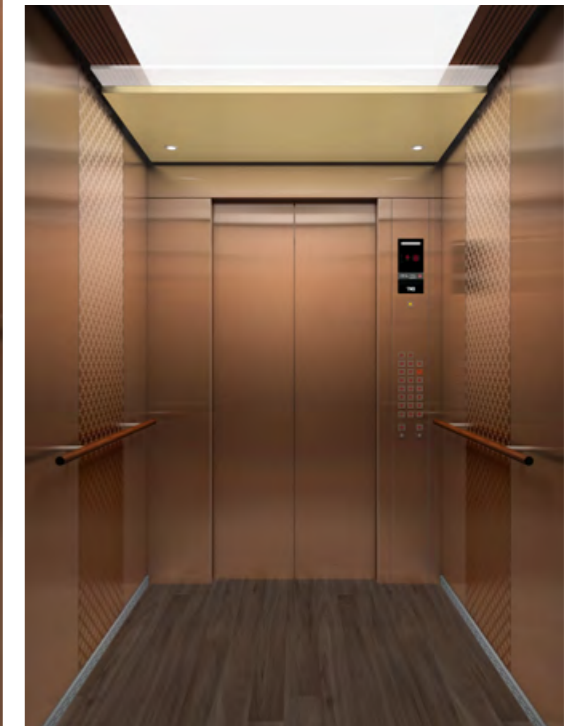
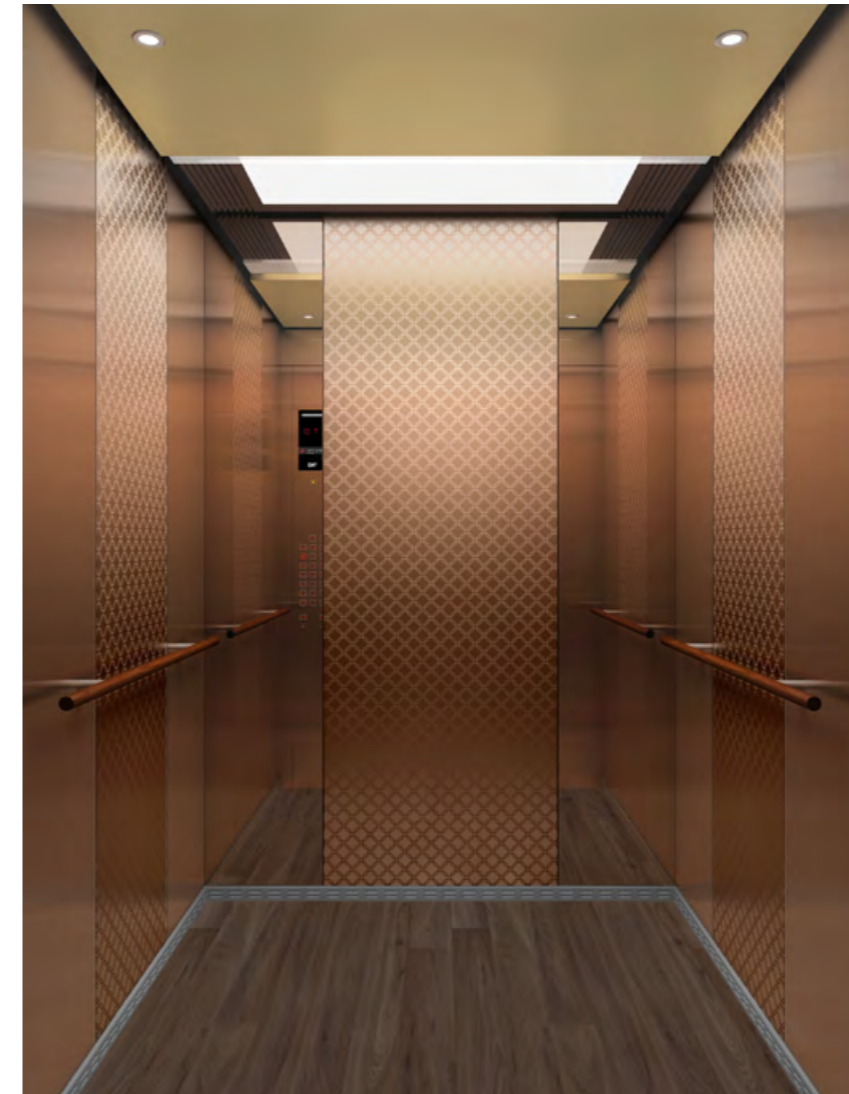
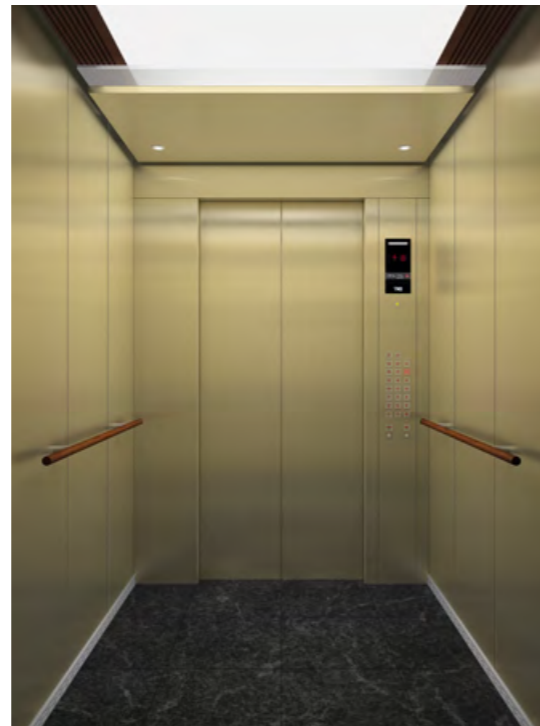
Handrail
HRA1



COP
CF3A-A11
Hairline finish stainless steel with champagne gold coating

HERITAGE REFINED

Revival of colors, crafts and materials from the past with today's conveniences.



HERITAGE CHARM



- Ceiling**
S1-C1
- Rear Wall**
Hairline finish stainless steel with champagne gold coating +
Mirror finish stainless steel with black titanium coating
- Side Wall**
Hairline finish stainless steel with champagne gold coating
- Front Wall / Car Door**
Vibratory finish stainless steel with champagne gold coating
- Floor**
H260
- Handrail**
HRA1



COP
CF3A-A11
Hairline finish stainless steel
with champagne gold coating

REFINED CHARM



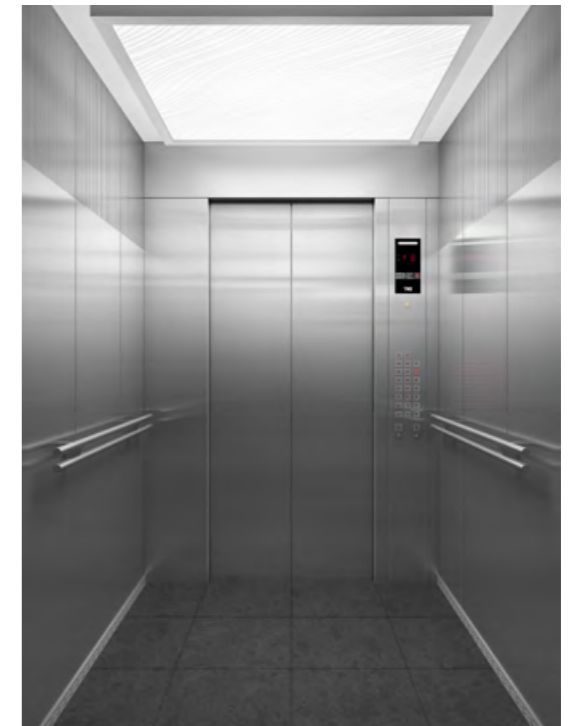
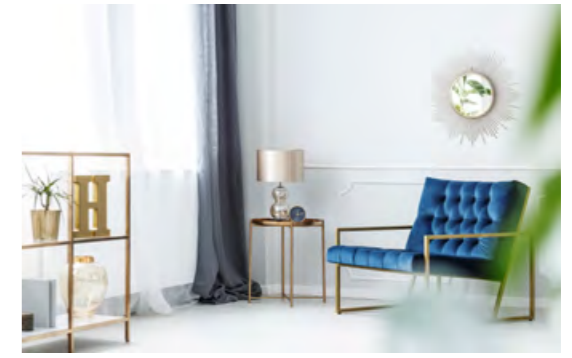
- Ceiling**
S1-C1
- Rear Wall**
Etched hairline finish stainless steel with rose gold coating +
Mirror finish stainless steel with rose gold coating
- Side Wall**
Etched hairline finish stainless steel with rose gold coating +
Hairline finish stainless steel with rose gold coating
- Front Wall / Car Door**
Hairline finish stainless steel with rose gold coating
- Floor**
TFW03
- Handrail**
HRA1



COP
CF3A-A11
Hairline finish stainless steel
with rose gold coating

CONTEMPORARY

Minimalistic interior design,
influenced by local taste.



FLORAL TWIST



- Ceiling**
S3-C1
- Rear Wall**
Mirror finish stainless steel +
Etched hairline finish stainless steel
- Side Wall**
Hairline finish stainless steel +
Etched hairline finish stainless steel
- Front Wall / Car Door**
Hairline finish stainless steel
- Floor**
TB8937



Handrail
TRH06



COP
CF3A-A11
Hairline finish stainless steel

STRIPE TWIST



- Ceiling**
S3-C1
- Rear Wall**
Etched hairline finish stainless steel
- Side Wall**
Etched hairline finish stainless steel
- Front Wall / Car Door**
Hairline finish stainless steel
- Floor**
TB8937



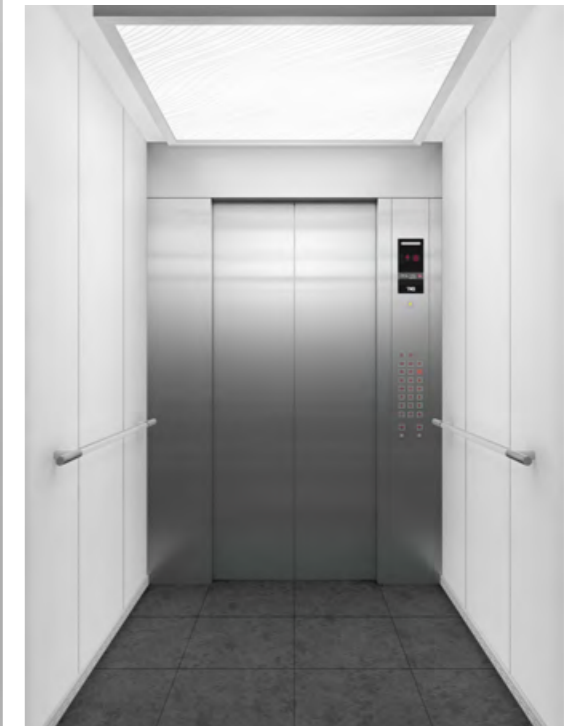
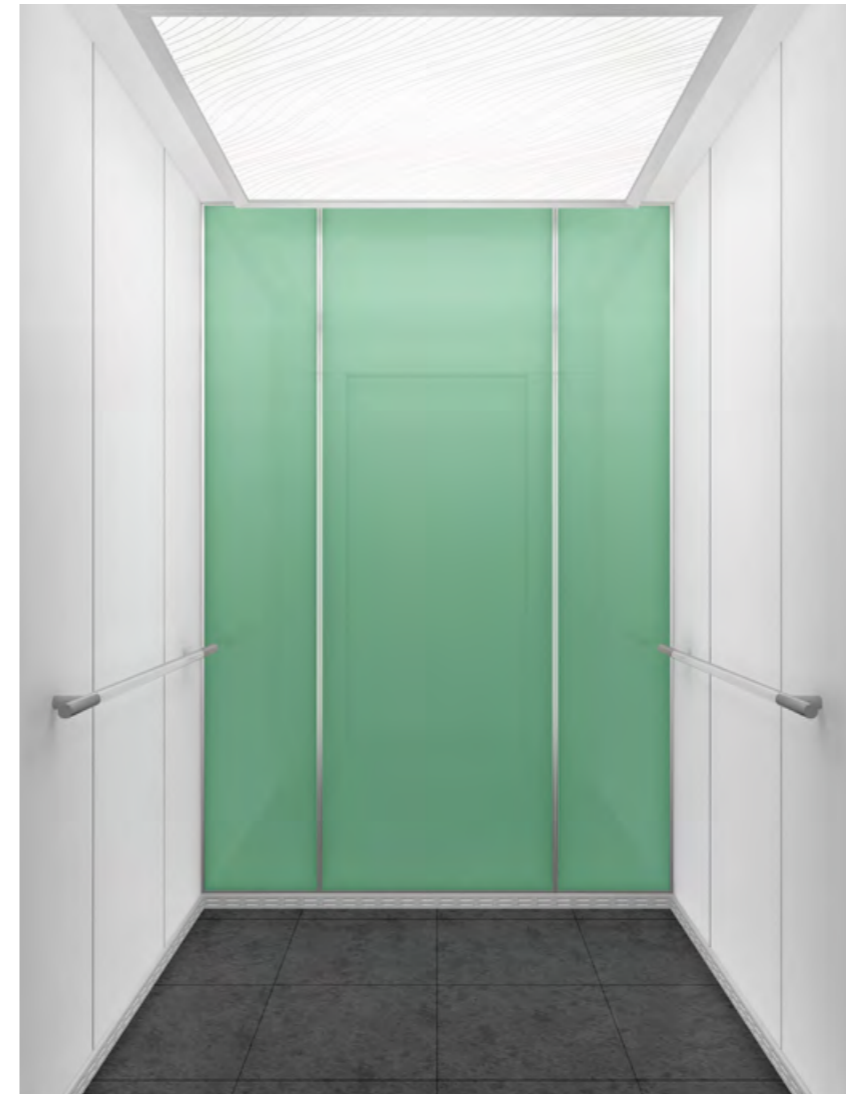
Handrail
TRH06



COP
CF3A-A11
Hairline finish stainless steel






NATURAL HOME

A cosy, warm and comfortable interior setting, created using natural textures.



NATURAL FLOW








-  Ceiling
S3-C1
-  Rear Wall
Resin plate + Aluminum alloy trim
-  Side Wall
Film on metal
-  Front Wall / Car Door
Hairline finish stainless steel
-  Floor
TFW13



COP
CF3A-A11
Hairline finish stainless steel

NATURAL CALM



-  Ceiling
S1-C1
-  Rear Wall
Laminated painted glass with mint green +
Mirror finish stainless steel trim
-  Side Wall
Power coating RAL9003
-  Front Wall / Car Door
Hairline finish stainless steel
-  Floor
TB8937



COP
CF3A-A11
Hairline finish stainless steel

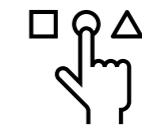
CREATE YOUR OWN CABIN WITH TK ELEVATOR DESIGN PALETTE

Creating your own cabin design is made easy using our themed selections of high quality materials, lighting and finishes. Each one is carefully composed to ensure a harmonious result that will match the aesthetics of your building.

Follow the step-by-step guide and use the cabin decoration material samples to help visualize your creativity. It is easy to be inspired, confident that you are creating an outstanding elevator cabin design.



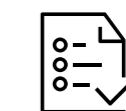
01
Select
your style



02
Design
your cabin



03
Finalize
your design



Provide a stylish experience

With a strong focus on usability, cabin atmosphere and overall ride comfort, meta200 ensures users travel in comfort and style.



Smooth rides

Advanced car design with damping device provides a smooth and comfortable travel experience.

Clean atmosphere

Powerful air-conditioning and air-purifying keep the atmosphere cool and the air fresh.

Harmonious lighting

Soft lighting creates a relaxed and pleasant atmosphere, and maintains a comfortable color temperature.

Clear cabin sounds

Intelligent car arrival chime with adjustable sound effects and volume.



DESIGNED FOR THE ENTRANCE

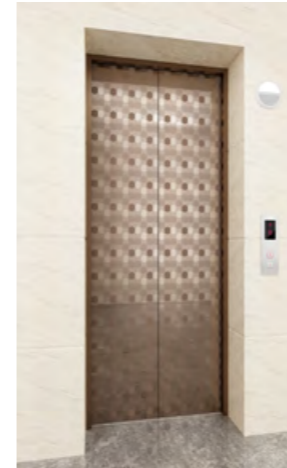
Starting at the lobby, make a first-class impression with meta200's premium selection of hall lanterns, doors and control panels.

Hall lantern

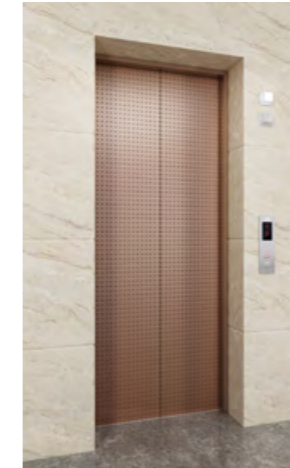


Hall door

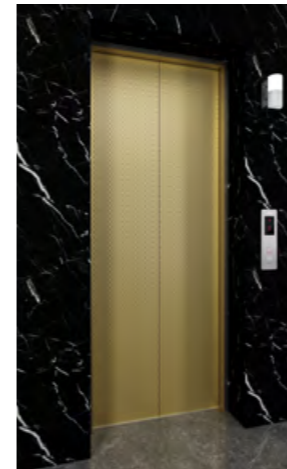
Door designs to complement your lobby and halls.



Etched hairline finish with bronze coating P026-EM-BR



Etched hairline finish with rose gold coating P028-EH-TR



Etched hairline finish with titanium coating P027-EH-TG



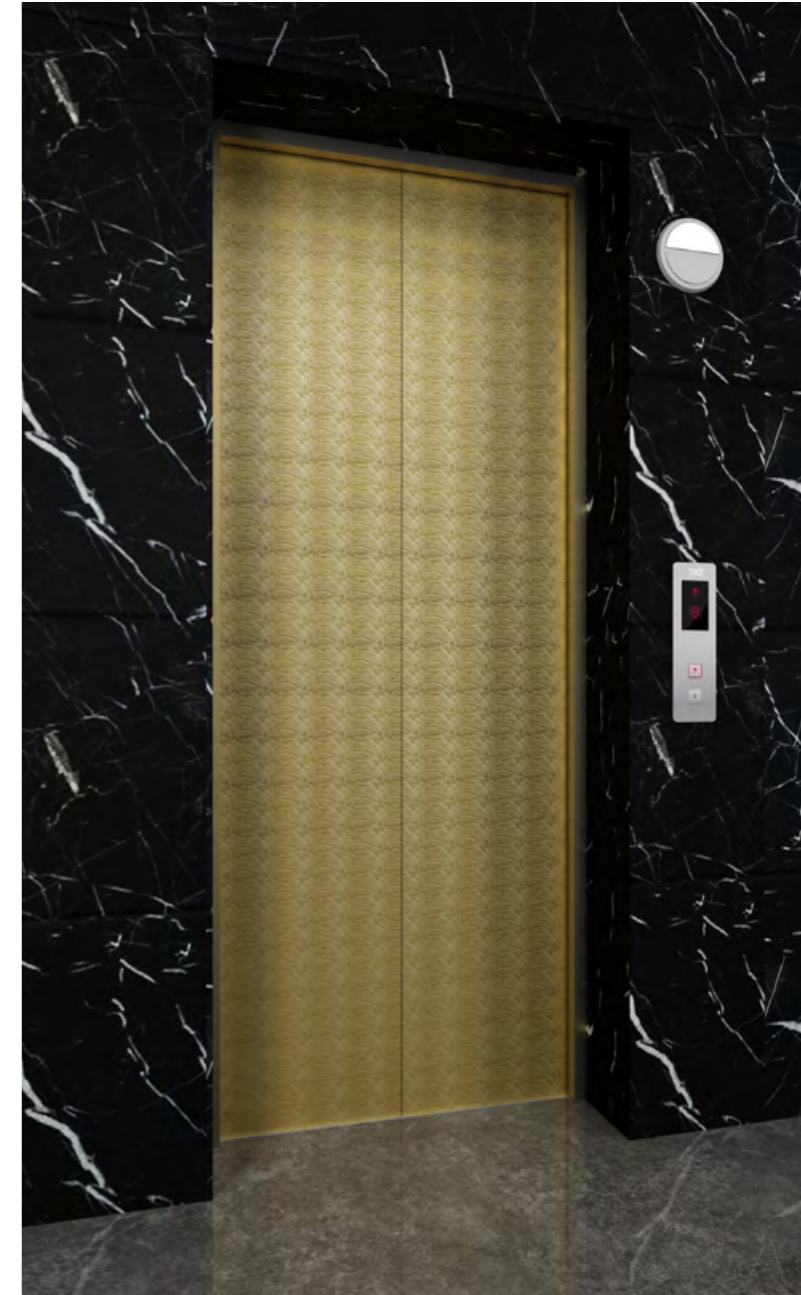
Etched hairline finish P036-EH



Etched mirror finish P009-EM



Etched mirror finish P022-EM



Etched hairline finish with titanium coating P014-EM-TG

FIXTURES

LOP

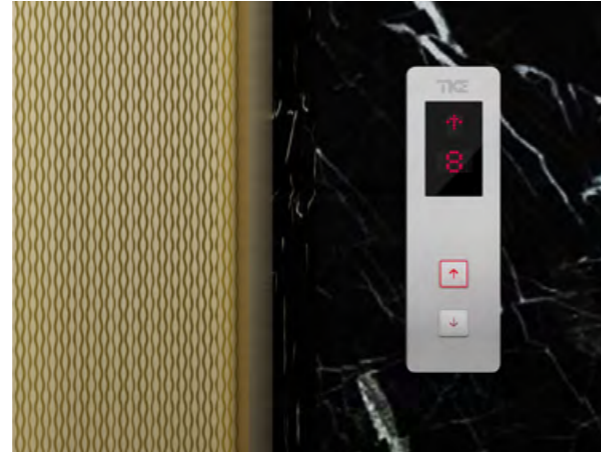
LOP configurations to match your cabin design.



LS1A-A11



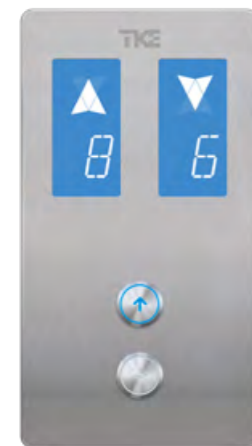
LD1A-A11



Panel	Stainless steel
Indicator	Red dot matrix
Button	Square button with red light



LS1A-D23



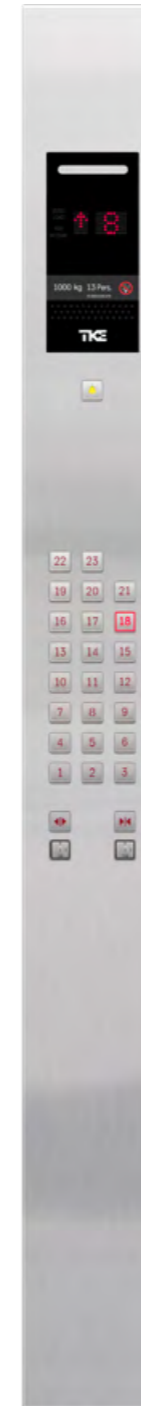
LD1A-D23



Panel	Stainless steel
Indicator	Blue white segment LCD
Button	Round button with blue light

COP

2 different COP to suit your building.



CF3A-A11



CF3A-D23



Square button
MT42



Round button
AN180

YOUR INNOVATION PARTNER

elevators and escalators in service

countries serviced

1,200,000 100+

employees

50,000+

service available for customers

locations

24/7 1,000+

service technicians

24,000+



WWW.TKELEVATOR.COM

FUNCTION LIST (MACHINEROOM-LESS)

CATEGORY	NO.	FUNCTION	STANDARD / OPTION
Enhanced Car Functions	1	Door reopen by following landing call at same landing	S
	2	Collective selective control	S
	3	Full-load non-stop	S
	4	Onward travel to the next stop in the case of a non-opening door	S
	5	Anti-nuisance "limit number of car call when empty load"	S
	6	Anti-nuisance "car call cancellation at terminal landing"	S
	7	Anti-nuisance "car call deletion opposite to travel direction"	S
	8	Adjustable waiting time for opening door at the main landing	S
	9	Adjustable speed and torque of door operator	S
	10	Re-leveling	S
	11	Energy saving operation for car light and fan	S
	12	Elevator start-up loading weighting compensation function	S
	13	In advance door open	O
	14	Changing fire landing	O
	15	Changing parking landing	O
	16	Changing main landing	O
	17	Main landing return	O
	18	Door nudging	O
Safety and Emergency Functions	19	Landing to the nearest floor in case of problem (e.g. Overheat of motor, car position missing)	S
	20	Fire emergency return (FER)	S
	21	Alarm button & intercom button	S
	22	Emergency car lighting	S
	23	Overload protect	S
	24	Repeat door closing in the event of lock failure	S
	25	Door overload protect	S
	26	Safety curtain for door	S
	27	Parking (by key switch)	S
	28	Phase failure and phase reversal protection	S
	29	Lockable main switch integrated for controller cabinet	S
	30	Emergency electrical operation	S
	31	Inspection operation	S
	32	Traction machine overheat supervision	S
	33	Traction machine skidding protection	S
	34	Prepared fire emergency return signal	S
	35	Unintended car movement protection	S
	36	Restrict the opening of the car door inside the car	S
	37	Brake torque detection function	S
	38	Door lock safety device failure detection	S
	39	Emergency operation for electrical brake release	S
	40	Main COP attendance	O
	41	Fireman service	O

FUNCTION LIST (MACHINEROOM-LESS)

CATEGORY	NO.	FUNCTION	STANDARD / OPTION
Safety and Emergency Functions	42	Door lock bypass function	S
	43	Automatic rescue operation	O
	44	Earthquake function (sensors by customer)	O
	45	Earthquake function (include sensors)	O
	46	Emergency power operation (generator by customer)	O
	47	Top of car emergency exit	O
	48	3D safety curtain	O
	49	Automatic doors	S
Trip Functions	50	Collective fault signal	S
	51	Operation counter (trip and hour)	S
	52	Car priority	O
	53	Through door	O
	54	Selective door (only in through car and second COP case)	O
	55	Special trip (landing priority) by key switch	O
	56	Card reader operate car call (instead of push button)	O
	57	Door close button	S
Human Machine Interface	58	Door open button	S
	59	Car call cancellation (by double press)	S
	60	Landing indicator of dot-matrix (red)	S
	61	Car indicator of dot-matrix (red)	S
	62	Landing indicator of 4.3" blue-white segment LCD	O
	63	Car indicator of 5.7" blue-white segment LCD	O
	64	Car arrival chime	O
	65	Landing arrival chime	O
	66	Speech synthesis service	O
	67	Second COP (exclude car attendant and intercom)	O
Monitoring and Tele-Service	68	COP for disabled persons (no indicator, braille push buttons as standard)	O
	69	Intercom system	S
	70	Traveling cable (include video transmission function)	O
	71	BAS interface function (dry contactor signal)	O
	72	Color video camera (in car)	O
	73	Remote monitor interfacing (exclude MH2 board)	O
	74	Remote monitor interfacing (include MH2 board, without modem)	O
	75	Supervision panel (cable by other, cable length≤150m)	O
	76	Build automation interfacing (RS232, MM board)	O
	77	Build automation interfacing (RS485, MMC board)	O
Group/Duplex Control	78	Lift monitoring system (exclude computer & printer)	O
	79	Group control (max. 8 units)	O
	80	Continued group / duplex operation in case of failure of the other elevator	O
	81	Peak service function (only for group control)	O
	82	Taking units out of group (timer / switch)	O

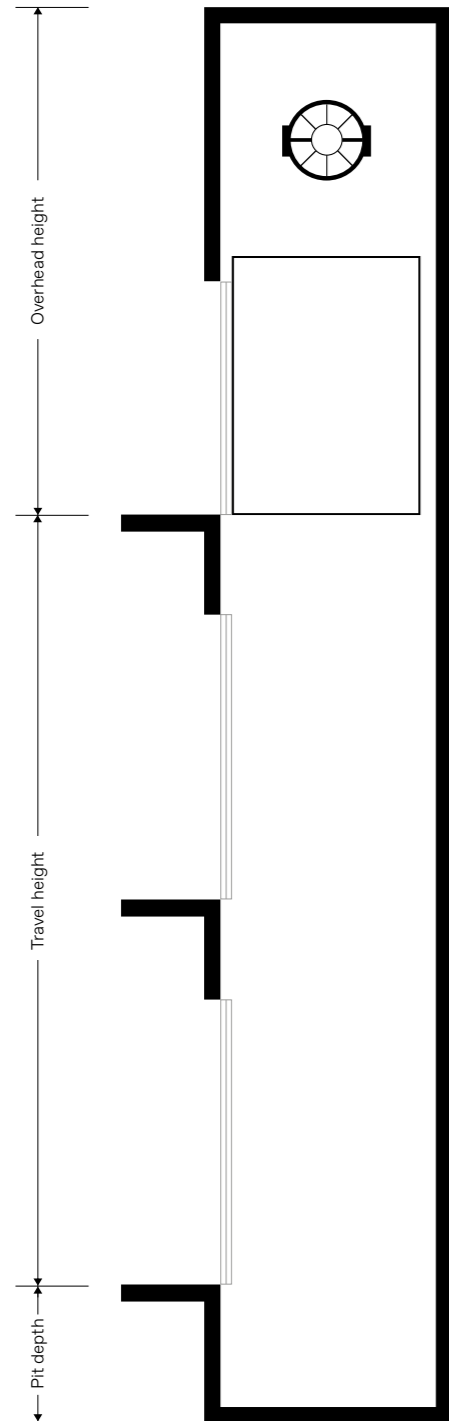
* S - Standard; O - Option

meta200 (GB CODE)

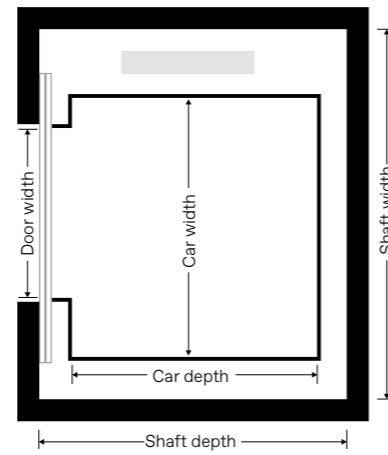
LAYOUT (MACHINEROOM-LESS)



Shaft vertical section



Shaft plan (centre opening)



meta200 (GB CODE)

TECHNICAL SPECIFICATIONS (MACHINEROOM-LESS)

RATED LOAD (KG)	RATED SPEED (M/S)	MAX. TRAVEL HEIGHT (M)	MAX. NUMBER OF FLOORS	DOOR SIZE (DW × DH) (MM)	CAR SIZE (CW × CD × CH) (MM)	SHAFT SIZE (SW × SD) (MM)
630	1.0	50	17	800 × 2100	1100 × 1400 × 2400	1820 × 1800
	1.5	75	26			
	1.6	75	30			
	1.75	90	35			
800	1.0	50	17	800 × 2100	1350 × 1400 × 2400	1950 × 1800
	1.5	75	26			
	1.75	90	31			
	2.0	110	32			2050 × 1800
1000	1.0	50	17	900 × 2100	1600 × 1400 × 2400	2200 × 1800
	1.5	75	26			
	1.6	75	30			
	1.75	90	35			2300 × 1800
1150	1.0	50	17	1100 × 2100	1800 × 1400 × 2400	2600 × 1800
	1.5	75	26			
	1.6	75	30			
	1.75	90	35			
1250	1.0	50	17	1100 × 2100	2000 × 1450 × 2400	2750 × 2050
	1.5	75	26			
	1.6	75	30			
	1.75	90	35			
1350	1.0	50	17	1100 × 2100	2000 × 1550 × 2400	2750 × 2050
	1.5	75	26			
	1.6	75	26			
	1.75	90	31			
1600	1.0	50	17	1100 × 2100	2000 × 1750 × 2400	2750 × 2250
	1.5	75	26			
	1.6	75	30			
	1.75	90	35			
	2.0	110	38			

MIN. OVERHEAD HEIGHT & MIN. PIT DEPTH

RATED SPEED (M/S)	MIN. OVERHEAD HEIGHT (MM)				MIN. PIT DEPTH (MM)			
	630KG	800-1150KG	1150KG	1250-1600KG	630KG	800-1150KG	1150KG	1250-1600KG
1.0	3750	3750	3850	4200	1300	1300	1200	1550
1.5	3950	3950	4000	4350	1450	1450	1450	1550
1.6	3950	3950	4000	4350	1450	1450	1450	1600
1.75	4000	4000	4050	4450	1550	1500	1550	1750
2.0	/	4250	4250	4450	/	1600	1600	1750

FUNCTION LIST (MACHINEROOM)

CATEGORY	NO.	FUNCTION	STANDARD / OPTION
Enhanced Car Functions	1	Door reopen by following landing call at same landing	S
	2	Collective selective control	S
	3	Full-load non-stop	S
	4	Onward travel to the next stop in the case of a non-opening door	S
	5	Anti-nuisance "limit number of car call when empty load"	S
	6	Anti-nuisance "car call cancellation at terminal landing"	S
	7	Anti-nuisance "car call deletion opposite to travel direction"	S
	8	Adjustable waiting time for opening door at the main landing	S
	9	Adjustable speed and torque of door operator	S
	10	Re-leveling	S
	11	Energy saving operation for car light and fan	S
	12	Elevator start-up loading weighting compensation function	S
	13	In advance door open	O
	14	Changing fire landing	O
	15	Changing parking landing	O
	16	Changing main landing	O
	17	Main landing return	O
	18	Door nudging	O
Safety and Emergency Functions	19	Landing to the nearest floor in case of problem (e.g. Overheat of motor, car position missing)	S
	20	Fire emergency return (FER)	S
	21	Alarm button & intercom button	S
	22	Emergency car lighting	S
	23	Overload protect	S
	24	Repeat door closing in the event of lock failure	S
	25	Door overload protect	S
	26	Safety curtain for door	S
	27	Parking (by key switch)	S
	28	Phase failure and phase reversal protection	S
	29	Lockable main switch integrated for controller cabinet	S
	30	Emergency electrical operation	S
	31	Inspection operation	S
	32	Traction machine oveheat supervision	S
	33	Traction machine skidding protection	S
	34	Prepared fire emergency return signal	S
	35	Unintended car movement protection	S
	36	Restrict the opening of the car door inside the car	S
	37	Brake torque detection function	S
	38	Door lock safety device failure detection	S
	39	Main COP attendance	O
	40	Fireman service	O
	41	Door lock bypass function	S

FUNCTION LIST (MACHINEROOM)

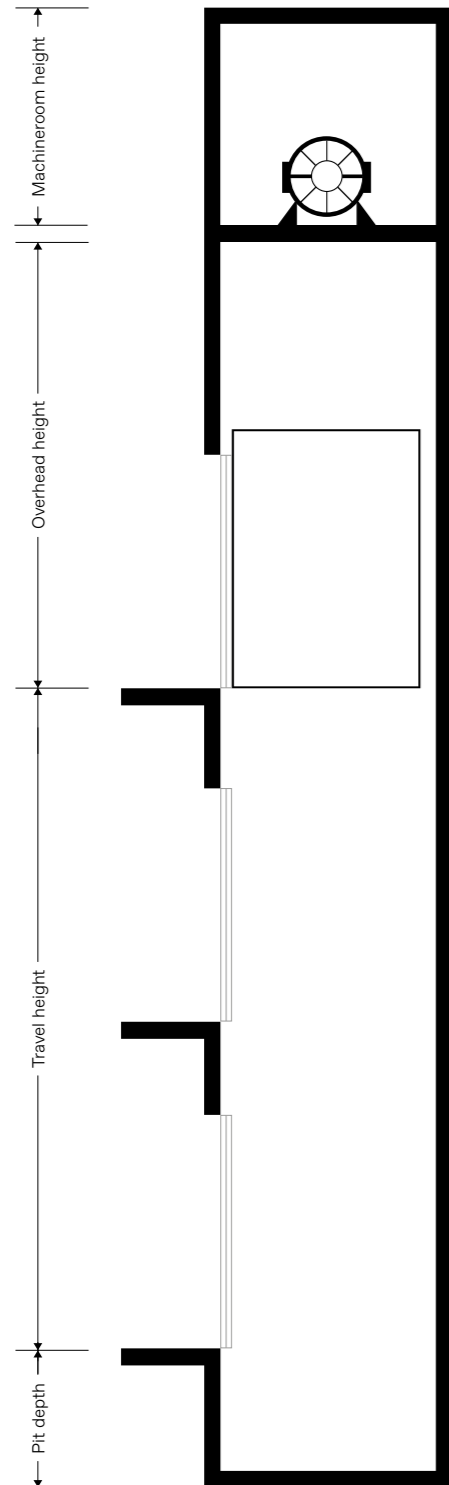
CATEGORY	NO.	FUNCTION	STANDARD / OPTION
Safety and Emergency Functions	42	Automatic rescue operation	O
	43	Earthquake function (sensors by customer)	O
	44	Earthquake function (include sensors)	O
	45	Emergency power operation (generator by customer)	O
	46	Top of car emergency exit	O
	47	3D safety curtain	O
	48	Automatic doors	S
Trip Functions	49	Collective fault signal	S
	50	Operation counter (trip and hour)	S
	51	Car priority	O
	52	Through door	O
	53	Selective door (only in through car and second COP case)	O
	54	Special trip (landing priority) by key switch	O
	55	Card reader operate car call (instead of push button)	O
	56	Door close button	S
	57	Door open button	S
	58	Car call cancellation (by double press)	S
Human Machine Interface	59	Landing indicator of dot-matrix (red)	S
	60	Car indicator of dot-matrix (red)	S
	61	Landing indicator of 4.3" blue-white segment LCD	O
	62	Car indicator of 5.7" blue-white segment LCD	O
	63	Car arrival chime	O
	64	Landing arrival chime	O
	65	Speech synthesis service	O
	66	Second COP (exclude car attendant and intercom)	O
	67	COP for disabled persons (no indicator, braille push buttons as standard)	O
	68	Intercom system	S
Monitoring and Tele-Service	69	Traveling cable (include video transmission function)	O
	70	BAS interface function (dry contactor signal)	O
	71	Color video camera (in car)	O
	72	Remote monitor interfacing (exclude MH2 board)	O
	73	Remote monitor interfacing (include MH2 board, without modem)	O
	74	Supervision panel (cable by other, cable length≤150m)	O
	75	Build automation interfacing (RS232, MM board)	O
	76	Build automation interfacing (RS485, MMC board)	O
	77	Lift monitoring system (exclude computer & printer)	O
Group/Duplex Control	78	Group control (max. 8 units)	O
	79	Continued group / duplex operation in case of failure of the other elevator	O
	80	Peak service function (only for group control)	O
	81	Taking units out of group (timer / switch)	O

Note: S - Standard O - Option

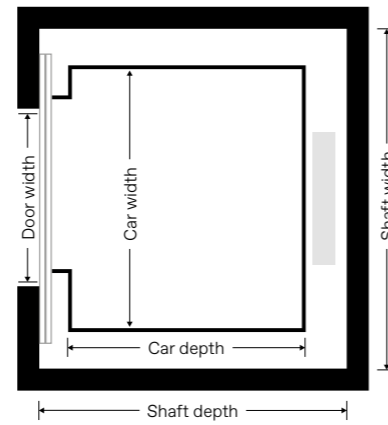
LAYOUT (MACHINEROOM)

COUNTER WEIGHT AT REAR

Shaft vertical section



Shaft plan (centre opening)



TECHNICAL SPECIFICATIONS (MACHINEROOM)

COUNTER WEIGHT AT REAR

RATED LOAD (KG)	RATED SPEED (M/S)	MAX. TRAVEL HEIGHT (M)	MAX. NUMBER OF FLOORS	DOOR SIZE (DW × DH) (MM)	CAR SIZE (CW × CD × CH) (MM)	SHAFT SIZE (SW × SD) (MM)
630	1.0	55	18	800 × 2100	1100 × 1400 × 2400	1800 × 2000
	1.5	75	26			
	1.6	85	30			
	1.75	85	35			
	1.0	50	17			
800	1.5	75	26	800 × 2100	1350 × 1400 × 2400	1900 × 2000
	1.6	75	30			
	1.75	90	35			
	2.0	110	38			
	2.5	125	38			
	3.0	150	40			
1000	1.0	50	17	900 × 2100	1600 × 1400 × 2400	2150 × 2000
	1.5	75	26			
	1.6	75	30			
	1.75	90	35			
	2.0	110	38			
	2.5	125	38			
1150	3.0	150	40	1100 × 2100	1800 × 1400 × 2400	2350 × 2000
	1.0	50	17			
	1.5	75	26			
	1.6	75	30			
	1.75	90	35			
	2.0	110	38			
1250	2.5	125	38	1100 × 2100	2000 × 1450 × 2400	2450 × 2170
	3.0	150	40			
	1.0	50	17			
	1.5	75	26			
	1.6	75	30			
	1.75	90	35			
1350	2.0	110	38	1100 × 2100	2000 × 1550 × 2400	2450 × 2270
	2.5	125	38			
	3.0	150	40			
	1.0	50	17			
	1.5	75	26			
	1.6	75	30			
1600	1.75	90	35	1100 × 2100	2000 × 1750 × 2400	2450 × 2470
	2.0	110	38			
	2.5	125	38			
	2.5	125	38			
	3.0	150	40			

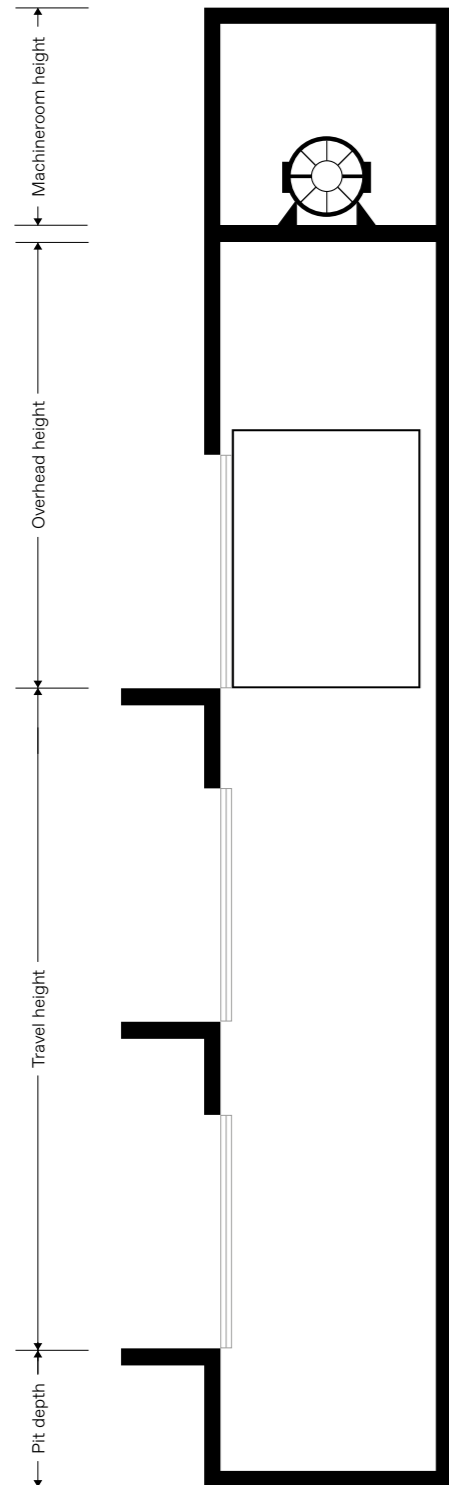
MIN. OVERHEAD HEIGHT & MIN. PIT DEPTH

RATED SPEED (M/S)	MIN. OVERHEAD HEIGHT (MM)			MIN. PIT DEPTH (MM)		
	630KG	800-1150KG	1250-1600KG	630KG	800-1150KG	1250-1600KG
1.0	3800	3800	4100	1250	1250	1300
1.5	3900	3900	4400	1300	1300	1400
1.6	3900	3900	4450	1300	1300	1400
1.75	3950	3950	4500	1300	1300	1400
2.0	/	4050	4550	/	1350	1400
2.5	/	4750	4750	/	1750	1750
3.0	/	4750	5000	/	2200	2200

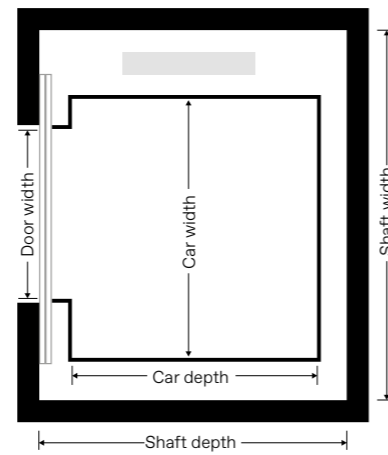
LAYOUT (MACHINEROOM)

COUNTER WEIGHT AT SIDE

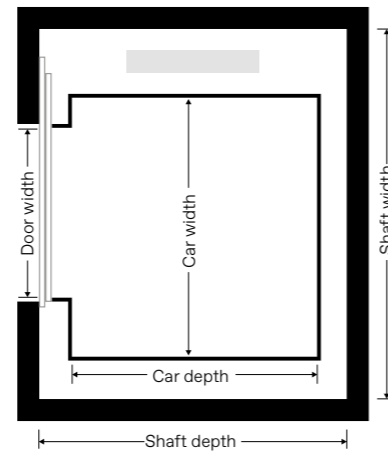
Shaft vertical section



Shaft plan (centre opening)



Shaft plan (side opening)



TECHNICAL SPECIFICATIONS (MACHINEROOM)

COUNTER WEIGHT AT SIDE

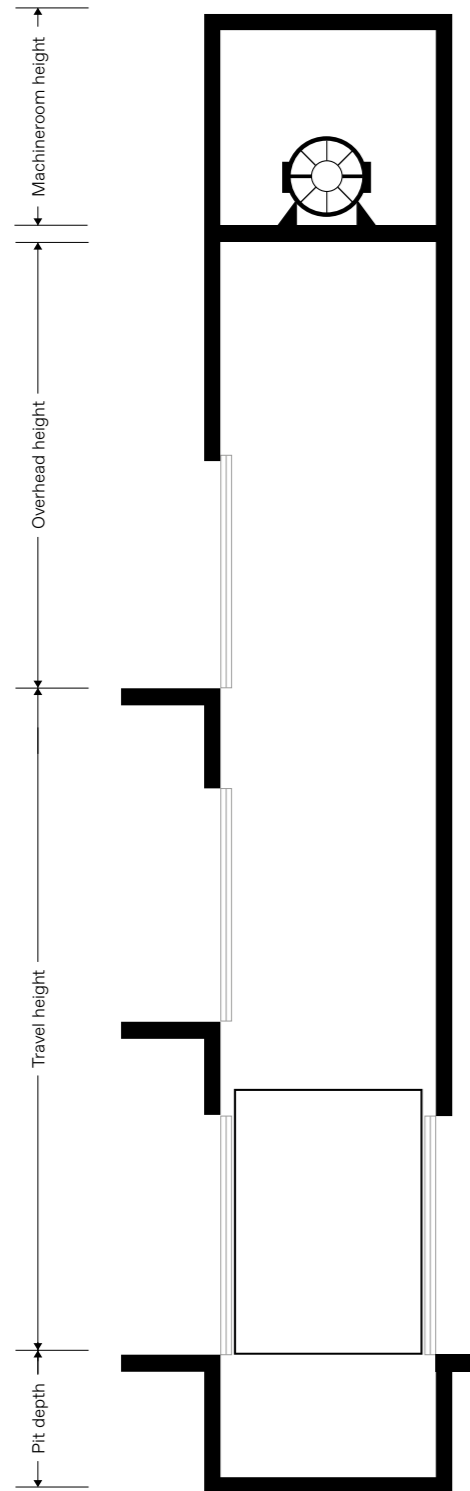
RATED LOAD (KG)	RATED SPEED (M/S)	MAX. TRAVEL HEIGHT (M)	MAX. NUMBER OF FLOORS	DOOR SIZE (DW × DH) (MM)	CAR SIZE (CW × CD × CH) (MM)	SHAFT SIZE (SW × SD) (MM)
630	1.0	55	18	800 × 2100 (centre opening door)	1100 × 1400 × 2400	1850 × 1800
	1.6	85	30			
	1.75	85	35			
800	1.0	50	17	800 × 2100 (centre opening door)	1350 × 1400 × 2400	1950 × 1800
	1.6	75	30			
	1.75	90	35			
1000	1.0	50	17	900 × 2100 (centre opening door)	1600 × 1400 × 2400	2200 × 1800
	1.6	75	30			
	1.75	90	35			
1000	1.0	50	17	900 × 2100 (side opening door)	1100 × 2100 × 2400	1850 × 2550
	1.6	75	30			
	1.75	90	35			
1150	1.0	50	17	1100 × 2100 (centre opening door)	1800 × 1400 × 2400	2400 × 1800
	1.6	75	30			
	1.75	90	35			
1150	1.0	50	17	1000 × 2100 (side opening door)	1200 × 2100 × 2400	1950 × 2550
	1.6	75	30			
	1.75	90	35			
1250	1.0	50	17	1100 × 2100 (side opening door)	1400 × 2050 × 2400	2300 × 2540
	1.5	75	26			
	1.6	75	30			
1250	1.75	90	35	1100 × 2100 (side opening door)	1400 × 2200 × 2400	2300 × 2690
	2.0	110	38			
	2.5	125	38			
1350	1.0	50	17	1100 × 2100 (side opening door)	1400 × 2200 × 2400	2300 × 2690
	1.5	75	26			
	1.6	75	30			
1350	1.75	90	35	1300 × 2100 (side opening door)	1400 × 2400 × 2400	2310 × 2890
	2.0	110	38			
	2.5	125	38			
1600	1.0	50	17	1300 × 2100 (side opening door)	1400 × 2400 × 2400	2310 × 2890
	1.5	75	26			
	1.6	75	30			
1600	1.75	90	35	1300 × 2100 (side opening door)	1400 × 2400 × 2400	2310 × 2890
	2.0	110	38			
	2.5	125	38			

MIN. OVERHEAD HEIGHT & MIN. PIT DEPTH

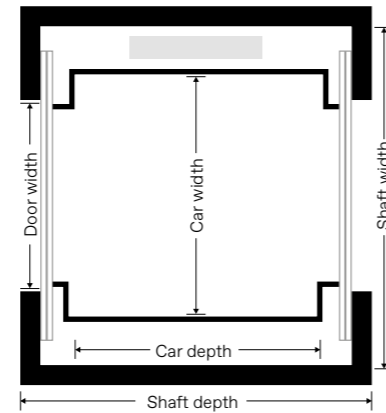
RATED SPEED (M/S)	MIN. OVERHEAD HEIGHT (MM)			MIN. PIT DEPTH (MM)		
	630KG	800-1150KG	1325-1600KG	630KG	800-1150KG	1250-1600KG
1.0	3750	3750	4100	1300	1300	1300
1.5	/	/	3900	/	/	1300
1.6	3900	3900	4450	1400	1400	1400
1.75	3950	3950	4500	1450	1450	1400
2.0	/	4050	4550	/	1550	1400
2.5	/	/	4750	/	/	1750

THROUGH DOOR

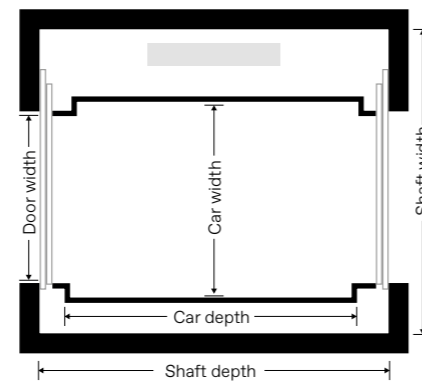
Shaft vertical section



Shaft plan (centre opening)



Shaft plan (side opening)



THROUGH DOOR

RATED LOAD (KG)	RATED SPEED (M/S)	MAX. TRAVEL HEIGHT (M)	MAX. NUMBER OF FLOORS	DOOR SIZE (DW × DH) (MM)	CAR SIZE (CW × CD × CH) (MM)	SHAFT SIZE (SW × SD) (MM)
630	1.0	55	18	800 × 2100 (centre opening door)	1100 × 1320 × 2400	1820 × 1850
	1.5	75	26			
	1.6	85	30			
	1.75	85	35			
800	1.0	50	17	900 × 2100 (side opening door)	1100 × 1480 × 2400	1850 × 2120
	1.5	75	26			
	1.6	75	30			
	1.75	90	35			
1000	1.0	50	17	900 × 2100 (side opening door)	1100 × 1880 × 2400	1850 × 2520
	1.5	75	26			
	1.6	75	30			
	1.75	90	35			
1150	1.0	50	17	1000 × 2100 (side opening door)	1200 × 1880 × 2400	1950 × 2520
	1.5	75	26			
	1.6	75	30			
	1.75	90	35			
1250	1.0	50	17	1100 × 2100 (side opening door)	1400 × 1900 × 2400	2300 × 2540
	1.5	75	26			
	1.6	75	30			
	1.75	90	35			
	2.0	110	38			
	2.5	125	38			
1350	1.0	50	17	1100 × 2100 (side opening door)	1400 × 2050 × 2400	2300 × 2690
	1.5	75	26			
	1.6	75	30			
	1.75	90	35			
	2.0	110	38			
	2.5	125	38			
1600	1.0	50	17	1300 × 2100 (side opening door)	1400 × 2250 × 2400	2310 × 2890
	1.5	75	26			
	1.6	75	30			
	1.75	90	35			
	2.0	110	38			
	2.5	125	38			

MIN. OVERHEAD HEIGHT & MIN. PIT DEPTH

RATED SPEED (M/S)	MIN. OVERHEAD HEIGHT (MM)			MIN. PIT DEPTH (MM)		
	630KG	800-1150KG	1250-1600KG	630KG	800-1150KG	1250-1600KG
1.0	3800	3800	4100	1250	1250	1300
1.5	3900	3900	3900	1300	1300	1300
1.6	3900	3900	4450	1300	1300	1400
1.75	3950	3950	4500	1300	1300	1400
2.0	/	4050	4550	/	1350	1400
2.5	/	/	4750	/	/	1750

FUNCTION LIST (MACHINEROOM-LESS)

CATEGORY	NO.	FUNCTION	STANDARD / OPTION	
Enhanced Car Functions	1	Door reopen by following landing call at same landing	S	
	2	Collective selective control	S	
	3	Full-load non-stop	S	
	4	Onward travel to the next stop in the case of a non-opening door	S	
	5	Anti-nuisance "limit number of car call when empty load"	S	
	6	Anti-nuisance "car call cancellation at terminal landing"	S	
	7	Anti-nuisance "car call deletion opposite to travel direction"	S	
	8	Adjustable waiting time for opening door at the main landing	S	
	9	Adjustable speed and torque of door operator	S	
	10	Re-leveling	S	
	11	Energy saving operation for car light and fan	S	
	12	Elevator start-up loading weighting compensation function	S	
	13	In advance door open	O	
	14	Changing fire landing	O	
	15	Changing parking landing	O	
	16	Changing main landing	O	
	Safety and Emergency Functions	17	Main landing return	O
		18	Door nudging	S
19		Landing to the nearest floor in case of problem (eg. Overheat of motor, car position missing)	S	
20		Fire emergency return (FER)	S	
21		Alarm button & intercom button	S	
22		Emergency car lighting	S	
23		Overload protect	S	
24		Repeat door closing in the event of lock failure	S	
25		Door overload protect	S	
26		Safety curtain for door	S	
27		Parking (by key switch)	S	
28		Phase failure and phase reversal protection	S	
29		Lockable main switch integrated for controller cabinet	S	
30		Emergency electrical operation	S	
31		Inspection operation	S	
32		Traction machine overheat supervision	S	
33		Traction machine skidding protection	S	
34		Prepared fire emergency return signal	S	
35		Unintended car movement protection	S	
36		Restrict the opening of the car door inside the car	S	
37		Brake torque detection function	S	
38		Door lock safety device failure detection	S	
39		Emergency operation for electrical brake release	S	
40		Main COP attendance	O	
41		Fireman service	O	
42		Door lock bypass function	S	

FUNCTION LIST (MACHINEROOM-LESS)

CATEGORY	NO.	FUNCTION	STANDARD / OPTION	
Safety and Emergency Functions	43	Automatic rescue operation	O	
	44	Earthquake function (sensors by customer)	O	
	45	Earthquake function (include sensors)	O	
	46	Emergency power operation (generator by customer)	O	
	47	Top of car emergency exit	S	
	48	Residual current devices function (RCD function)	S	
	49	3D safety curtain	O	
	Trip Functions	50	Automatic doors	S
		51	Collective fault signal	S
52		Operation counter (trip and hour)	S	
53		Car priority	O	
54		Through door	O	
55		Selective door (only in through car and second COP case)	O	
56		Special trip (landing priority) by key switch	O	
57		Card reader operate car call (instead of push button)	O	
Human Machine Interface	58	Door close button	S	
	59	Door open button	S	
	60	Car call cancellation (by double press)	S	
	61	Landing indicator of dot-matrix (red)	S	
	62	Car indicator of dot-matrix (red)	S	
	63	Landing indicator of 4.3" blue-white segment LCD	O	
	64	Car indicator of 5.7" blue-white segment LCD	O	
	65	Car arrival chime	O	
	66	Landing arrival chime	O	
	67	Speech synthesis service	O	
Monitoring and Tele-Service	68	Second COP (exclude car attendant and intercom)	O	
	69	COP for disabled persons (no indicator, braille push buttons as standard)	O	
	70	Intercom system	S	
	71	Traveling cable (include video transmission function)	O	
	72	BAS interface function (dry contactor signal)	O	
	73	Color video camera (in car)	O	
	74	Remote monitor interfacing (exclude MH2 board)	O	
	75	Remote monitor interfacing (include MH2 board, without modem)	O	
	76	Supervision panel (cable by other, cable length≤150m)	O	
	77	Build automation interfacing (RS232, MM board)	O	
Group/Duplex Control	78	Build automation interfacing (RS485, MMC board)	O	
	79	Lift monitoring system (exclude computer & printer)	O	
	80	Group control (max. 8 units)	O	
	81	Continued group / duplex operation in case of failure of the other elevator	O	
	82	Peak service function (only for group control)	O	
	83	Taking units out of group (timer / switch)	O	

* S - Standard; O - Option

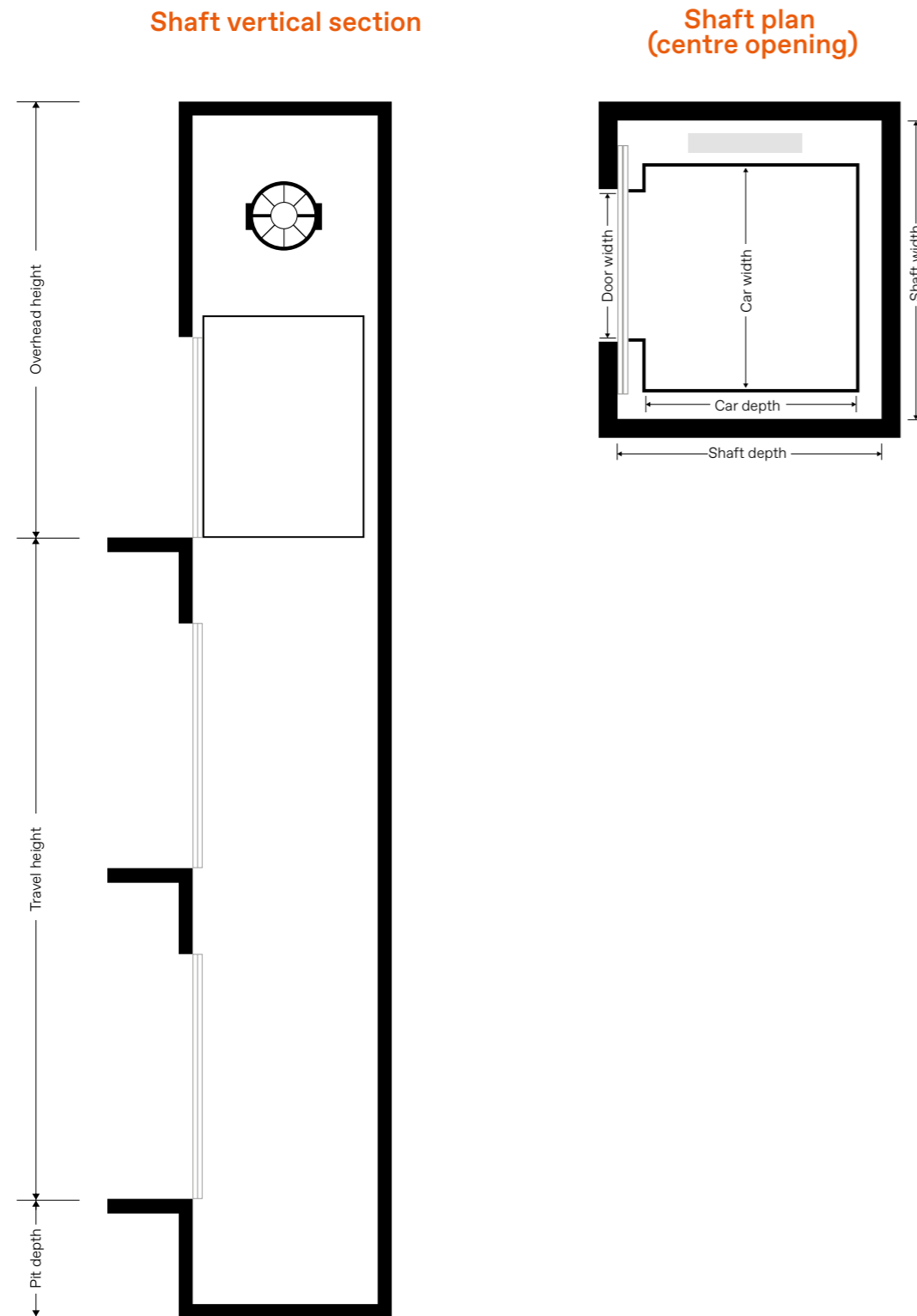
meta200 (EN CODE)

LAYOUT (MACHINEROOM-LESS)



meta200 (EN CODE)

TECHNICAL SPECIFICATIONS (MACHINEROOM-LESS)



RATED LOAD (KG)	RATED SPEED (M/S)	MAX. TRAVEL HEIGHT (M)	MAX. NUMBER OF FLOORS	DOOR SIZE (DW × DH) (MM)	CAR SIZE (CW × CD × CH) (MM)	SHAFT SIZE (SW × SD) (MM)
630	1.0	50	17	800 × 2100	1100 × 1400 × 2400	1825 × 1800
	1.5	75	26			
	1.6	75	26			
	1.75	90	31			
800	1.0	50	17	800 × 2100	1350 × 1400 × 2400	2050 × 1800
	1.5	75	26			
	1.75	90	31			
	2.0	110	32			
1000	1.0	50	17	900 × 2100	1600 × 1400 × 2400	2300 × 1800
	1.5	75	26			
	1.6	75	26			
	1.75	90	31			
1150	1.0	50	17	1100 × 2100	1800 × 1400 × 2400	2600 × 1800
	1.5	75	26			
	1.6	75	26			
	1.75	90	31			
1250	1.0	50	17	1100 × 2100	2000 × 1450 × 2400	2750 × 2050
	1.5	75	26			
	1.6	75	26			
	1.75	90	31			
1350	1.0	50	17	1100 × 2100	2000 × 1550 × 2400	2750 × 2050
	1.5	75	26			
	1.6	75	26			
	1.75	90	31			
1600	1.0	50	17	1100 × 2100	2000 × 1750 × 2400	2750 × 2250
	1.5	75	26			
	1.6	75	26			
	1.75	90	31			
	2.0	110	32			

MIN. OVERHEAD HEIGHT & MIN. PIT DEPTH

RATED SPEED (M/S)	MIN. OVERHEAD HEIGHT (MM)			MIN. PIT DEPTH (MM)		
	630KG	800-1150KG	1250-1600KG	630KG	800-1150KG	1250-1600KG
1.0	4200	4200	4200	1200	1200	1550
1.5	4300	4300	4350	1450	1450	1550
1.6	4300	4300	4350	1450	1450	1600
1.75	4350	4350	4450	1550	1550	1750
2.0	/	4450	4450	/	1600	1750

FUNCTION LIST (MACHINEROOM)

CATEGORY	NO.	FUNCTION	STANDARD / OPTION
Enhanced Car Functions	1	Door reopen by following landing call at same landing	S
	2	Collective selective control	S
	3	Full-load non-stop	S
	4	Onward travel to the next stop in the case of a non-opening door	S
	5	Anti-nuisance "limit number of car call when empty load"	S
	6	Anti-nuisance "car call cancellation at terminal landing"	S
	7	Anti-nuisance "car call deletion opposite to travel direction"	S
	8	Adjustable waiting time for opening door at the main landing	S
	9	Adjustable speed and torque of door operator	S
	10	Re-leveling	S
	11	Energy saving operation for car light and fan	S
	12	Elevator start-up loading weighting compensation function	S
	13	In advance door open	O
	14	Changing fire landing	O
	15	Changing parking landing	O
	16	Changing main landing	O
	17	Main landing return	O
	18	Door nudging	O
Safety and Emergency Functions	19	Landing to the nearest floor in case of problem (eg. Overheat of motor, car position missing)	S
	20	Fire emergency return (FER)	S
	21	Alarm button & intercom button	S
	22	Emergency car lighting	S
	23	Overload protect	S
	24	Repeat door closing in the event of lock failure	S
	25	Door overload protect	S
	26	Safety curtain for door	S
	27	Parking (by key switch)	S
	28	Phase failure and phase reversal protection	S
	29	Lockable main switch integrated for controller cabinet	S
	30	Emergency electrical operation	S
	31	Inspection operation	S
	32	Traction machine overheat supervision	S
	33	Traction machine skidding protection	S
	34	Prepared fire emergency return signal	S
	35	Unintended car movement protection	S
	36	Restrict the opening of the car door inside the car	S
	37	Brake torque detection function	S
	38	Door lock safety device failure detection	S
	39	Main COP attendance	O
	40	Fireman service	O
	41	Door lock bypass function	S
	42	Automatic rescue operation	O

FUNCTION LIST (MACHINEROOM)

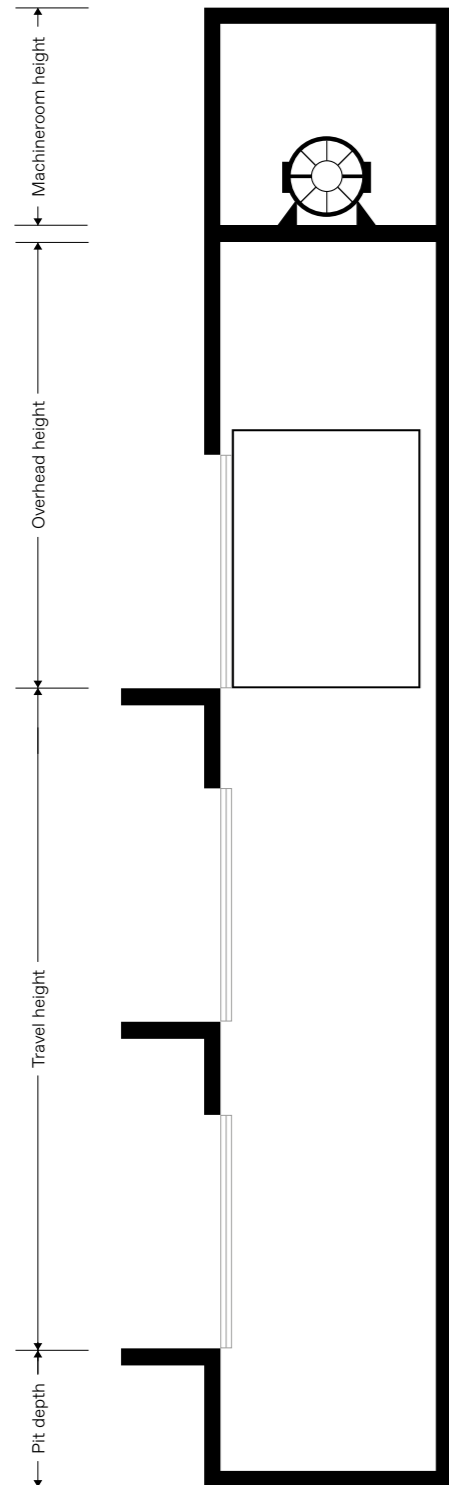
CATEGORY	NO.	FUNCTION	STANDARD / OPTION
Safety and Emergency Functions	43	Earthquake function (sensors by customer)	O
	44	Earthquake function (include sensors)	O
	45	Emergency power operation (generator by customer)	O
	46	Top of car emergency exit	O
	47	Residual current device function (RCD function)	S
	48	3D safety curtain	O
	49	Automatic doors	S
	50	Collective fault signal	S
Trip Functions	51	Operation counter (trip and hour)	S
	52	Car priority	O
	53	Through door	O
	54	Selective door (only in through car and second COP case)	O
	55	Special trip (landing priority) by key switch	O
	56	Card reader operate car call (instead of push button)	O
	57	Door close button	S
	58	Door open button	S
Human Machine Interface	59	Car call cancellation (by double press)	S
	60	Landing indicator of dot-matrix (red)	S
	61	Car indicator of dot-matrix (red)	S
	62	Landing indicator of 4.3" blue-white segment LCD	O
	63	Car indicator of 5.7" blue-white segment LCD	O
	64	Car arrival chime	O
	65	Landing arrival chime	O
	66	Speech synthesis service	O
	67	Second COP (exclude car attendant and intercom)	O
	68	COP for disabled persons (no indicator, braille push buttons as standard)	O
Monitoring and Tele-Service	69	Intercom system	S
	70	Traveling cable (include video transmission function)	O
	71	BAS interface function (dry contactor signal)	O
	72	Color video camera (in car)	O
	73	Remote monitor interfacing (exclude MH2 board)	O
	74	Remote monitor interfacing (include MH2 board, without modem)	O
	75	Supervision panel (cable by other, cable length≤150m)	O
	76	Build automation interfacing (RS232, MM board)	O
	77	Build automation interfacing (RS485, MMC board)	O
	78	Lift monitoring system (exclude computer & printer)	O
Group/Duplex Control	79	Group control (max. 8 units)	O
	80	Continued group / duplex operation in case of failure of the other elevator	O
	81	Peak service function (only for group control)	O
	82	Taking units out of group (timer / switch)	O

* S - Standard; O - Option

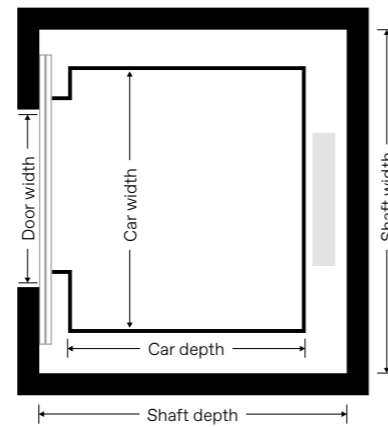
LAYOUT (MACHINEROOM)

COUNTER WEIGHT AT REAR

Shaft vertical section



Shaft plan (centre opening)



TECHNICAL SPECIFICATIONS (MACHINEROOM)

COUNTER WEIGHT AT REAR

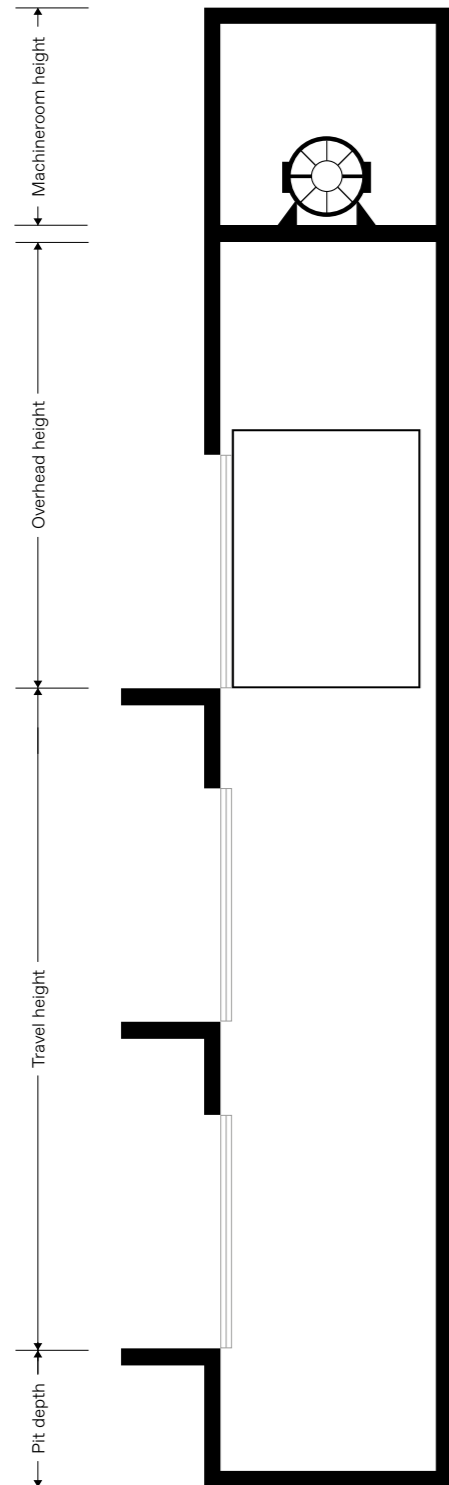
RATED LOAD (KG)	RATED SPEED (M/S)	MAX. TRAVEL HEIGHT (M)	MAX. NUMBER OF FLOORS	DOOR SIZE (DW × DH) (MM)	CAR SIZE (CW × CD × CH) (MM)	SHAFT SIZE (SW × SD) (MM)
630	1.0	55	18	800 × 2100	1100 × 1400 × 2400	1800 × 2000
	1.5	75	26			
	1.6	85	30			
	1.75	85	30			
800	1.0	55	17	800 × 2100	1350 × 1400 × 2400	1900 × 2000
	1.5	75	26			
	1.6	85	26			
	1.75	85	31			
	2.0	110	32			
	2.5	125	32			
1000	1.0	55	17	900 × 2100	1600 × 1400 × 2400	2150 × 2000
	1.5	75	26			
	1.6	85	26			
	1.75	85	31			
	2.0	110	32			
	2.5	125	32			
1150	1.0	55	17	1100 × 2100	1800 × 1400 × 2400	2350 × 2000
	1.5	75	26			
	1.6	85	26			
	1.75	85	31			
	2.0	110	32			
	2.5	125	32			
1250	1.0	55	17	1100 × 2100	2000 × 1450 × 2400	2450 × 2170
	1.5	75	26			
	1.6	85	26			
	1.75	85	31			
	2.0	110	32			
	2.5	125	32			
1350	1.0	55	17	1100 × 2100	2000 × 1550 × 2400	2450 × 2270
	1.5	75	26			
	1.6	85	26			
	1.75	85	31			
	2.0	110	32			
	2.5	125	32			
1600	1.0	55	17	1100 × 2100	2000 × 1750 × 2400	2450 × 2470
	1.5	75	26			
	1.6	85	26			
	1.75	85	31			
	2.0	110	32			
	2.5	125	32			
	3.0	150	40			

MIN. OVERHEAD HEIGHT & MIN. PIT DEPTH

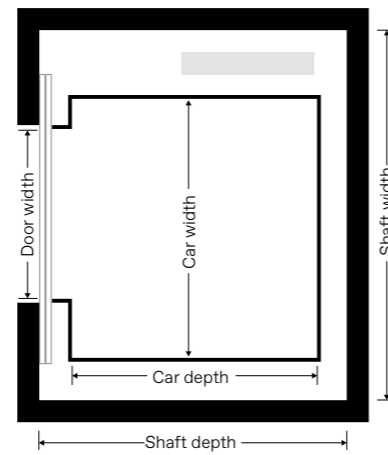
RATED SPEED (M/S)	MIN. OVERHEAD HEIGHT (MM)			MIN. PIT DEPTH (MM)			
	630KG	800-1150KG	1250-1600KG	630KG	800-1150KG	1250KG	1350-1600KG
1.0	4200	4100	4350	1600	1600	1650	1300
1.5	4300	4200	4500	1650	1650	1750	1400
1.6	4300	4200	4550	1650	1650	1750	1400
1.75	4350	4250	4550	1650	1650	1750	1400
2.0	/	4350	4600	/	1750	1800	1400
2.5	/	4750	4850	/	1950	1950	1750
3.0	/	5100	5150	/	2200	2200	2200

COUNTER WEIGHT AT SIDE

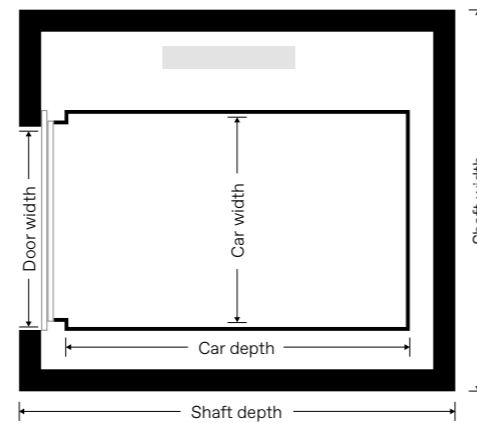
Shaft vertical section



Shaft plan (centre opening)



Shaft plan (side opening)



COUNTER WEIGHT AT SIDE

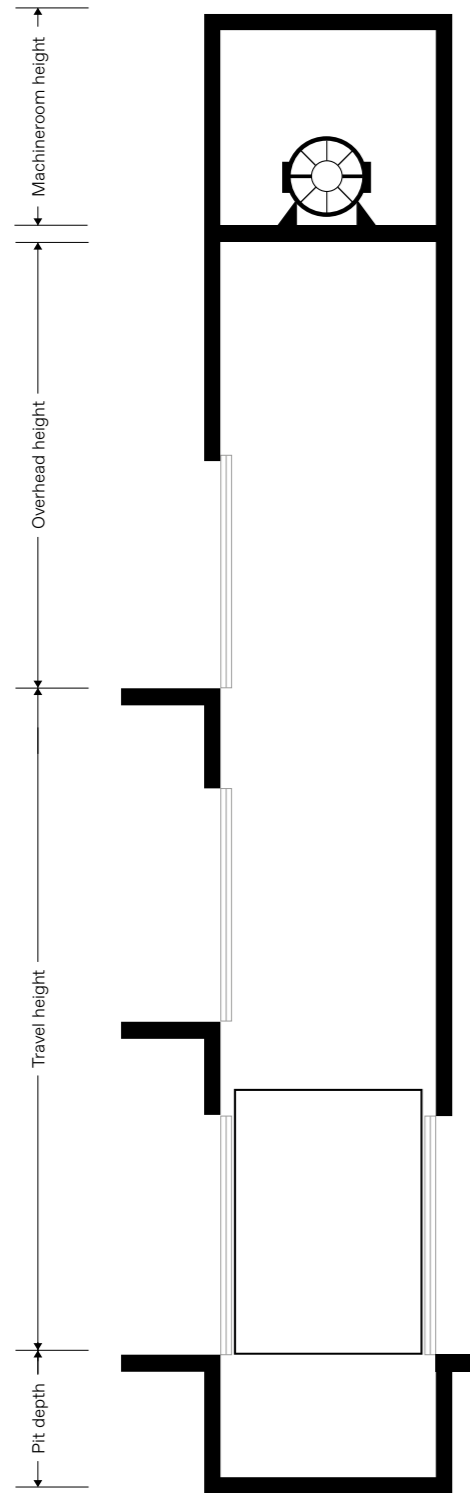
RATED LOAD (KG)	RATED SPEED (M/S)	MAX. TRAVEL HEIGHT (M)	MAX. NUMBER OF FLOORS	DOOR SIZE (DW × DH) (MM)	CAR SIZE (CW × CD × CH) (MM)	SHAFT SIZE (SW × SD) (MM)
630	1.0	55	18	800 × 2100 (centre opening door)	1100 × 1400 × 2400	1820 × 1850
	1.5	75	26			
	1.6	85	30			
	1.75	85	30			
800	1.0	55	17	800 × 2100 (side opening door)	1100 × 1700 × 2400	1850 × 2150
	1.5	75	26			
	1.6	85	26			
	1.75	85	31			
1050	1.0	55	17	900 × 2100 (side opening door)	1100 × 2100 × 2400	1850 × 2550
	1.5	75	26			
	1.6	85	26			
	1.75	85	31			
1150	1.0	55	17	1100 × 2100 (side opening door)	1200 × 2100 × 2400	1950 × 2550
	1.5	75	26			
	1.6	85	26			
	1.75	85	31			
1325	1.0	55	17	1100 × 2100 (side opening door)	1400 × 2050 × 2400	2300 × 2540
	1.5	75	26			
	1.6	85	26			
	1.75	85	31			
	2.0	110	32			
1425	1.0	55	17	1100 × 2100 (side opening door)	1400 × 2200 × 2400	2300 × 2690
	1.5	75	26			
	1.6	85	26			
	1.75	85	31			
	2.0	110	32			
1600	1.0	55	17	1300 × 2100 (side opening door)	1400 × 2400 × 2400	2310 × 2890
	1.5	75	26			
	1.6	85	26			
	1.75	85	31			
	2.0	110	32			
	2.5	125	32			

MIN. OVERHEAD HEIGHT & MIN. PIT DEPTH

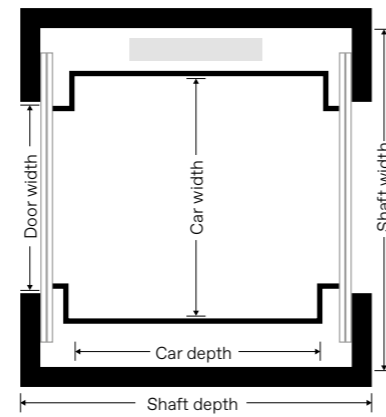
RATED SPEED (M/S)	MIN. OVERHEAD HEIGHT (MM)			MIN. PIT DEPTH (MM)			
	630KG	800-1150KG	1325-1600KG	630KG	800-1150KG	1250KG	1350-1600KG
1.0	4200	4200	4350	1600	1600	1250	1300
1.5	4300	4300	4500	1650	1650	1300	1400
1.6	4300	4300	4550	1650	1650	1300	1400
1.75	4350	4350	4550	1650	1650	1300	1400
2.0	/	4450	4600	/	1750	1350	1400
2.5	/	4750	4850	/	/	/	1750

THROUGH DOOR

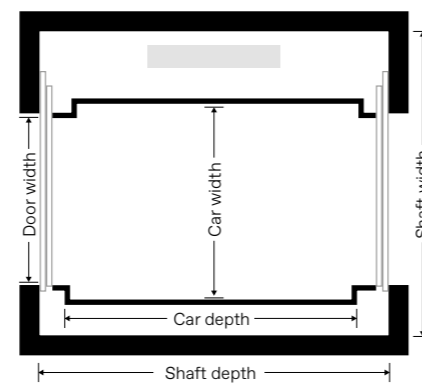
Shaft vertical section



Shaft plan (centre opening)



Shaft plan (side opening)



THROUGH DOOR

RATED LOAD (KG)	RATED SPEED (M/S)	MAX. TRAVEL HEIGHT (M)	MAX. NUMBER OF FLOORS	DOOR SIZE (DW × DH) (MM)	CAR SIZE (CW × CD × CH) (MM)	SHAFT SIZE (SW × SD) (MM)
630	1.0	55	18	800 × 2100	1100 × 1320 × 2400	1820 × 1850
	1.5	75	26			
	1.6	85	30			
	1.75	85	30			
800	1.0	55	17	900 × 2100 (side opening door)	1100 × 1480 × 2400	1850 × 2120
	1.5	75	26			
	1.6	85	26			
	1.75	85	31			
1000	1.0	55	17	900 × 2100 (side opening door)	1100 × 1880 × 2400	1850 × 2520
	1.5	75	26			
	1.6	85	26			
	1.75	85	31			
1150	1.0	55	17	1000 × 2100 (side opening door)	1200 × 1880 × 2400	1950 × 2520
	1.5	75	26			
	1.6	85	26			
	1.75	85	31			
1325	1.0	55	17	1100 × 2100 (side opening door)	1400 × 1900 × 2400	2300 × 2540
	1.5	75	26			
	1.6	85	26			
	1.75	85	31			
	2.0	110	32			
	2.5	125	32			
1425	1.0	55	17	1100 × 2100 (side opening door)	1400 × 2050 × 2400	2300 × 2690
	1.5	75	26			
	1.6	85	26			
	1.75	85	31			
	2.0	110	32			
	2.5	125	32			
1600	1.0	55	17	1300 × 2100 (side opening door)	1400 × 2250 × 2400	2310 × 2890
	1.5	75	26			
	1.6	85	26			
	1.75	85	31			
	2.0	110	32			
	2.5	125	32			

MIN. OVERHEAD HEIGHT & MIN. PIT DEPTH

RATED SPEED (M/S)	MIN. OVERHEAD HEIGHT (MM)			MIN. PIT DEPTH (MM)		
	630KG	800-1150KG	1325-1600KG	630KG	800-1150KG	1325-1600KG
1.0	4200	4200	4350	1600	1600	1300
1.5	4300	4300	4500	1650	1650	1400
1.6	4300	4300	4550	1650	1650	1400
1.75	4350	4350	4550	1650	1650	1400
2.0	/	4450	4600	/	1750	1400
2.5	/	/	4850	/	/	1750