

STANDARD-ARRANGEMENT:
(TECHNICAL DATA)

Step width (S) [mm]	1000
Total width of Escalator (B) [mm]	1530
Floor opening (D) [mm]	1590
Inclination [°]	35
Rise [mm]	4500
Speed [m/s]	0.5
Capacity [Pers/h]	6000
Dead Weight [Kg]	XXXX
Control	keyswitch
Power supply [V]	220/380,50HZ
Motor – capacity [kW]	7.5

TO BE PROVIDED BY OTHERS (Observation of all standards, guidelines acc. to each specific country)

At the landings the conveyor a sufficient unrestricted area shall be available to accomodate passengers.

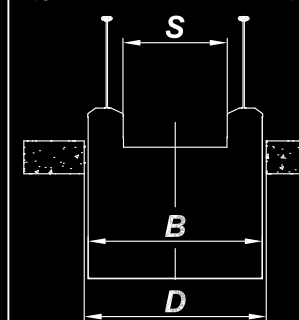
Dimensions:

Clear access route into the building 3.5m x 3.5m
access route must be obstruction free.

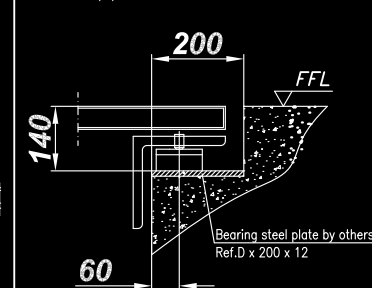
Outer cladding(if by others), Maximum weight for both sides is 25kg/m². for soffit is 15kg/m² .

- Ⓑ Holes for lifting tackle size by others. Diameter is 100mm
Load 35KN per hole.
- Ⓔ Lead in wire by others at upper part. Free wire end
1500 mm for single arrangement;
1500mm and 5000mm for parallel arrangement.

Cross section
(glass balustrade-slim)



End support

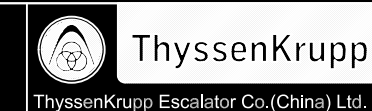


Tolerance which have to be kept by others	Deviations in mm for distance at the measuring points				
	to 4m	10m	25m	50m	100m
	±5	±10	±15	±20	±30
Notice					Name
1					
2					
3					
4					

Model: FT853 5EK 35D 800hor

Project :
Kayseri Entegre Health Campus,Turkey(E1-E12)

Installation of
Escalators



Scale		Name	Date	Draw.No.: GAD-2015-468.00
	Drawn			GTE No.:
	Check			
	Approve			

INDOOR