

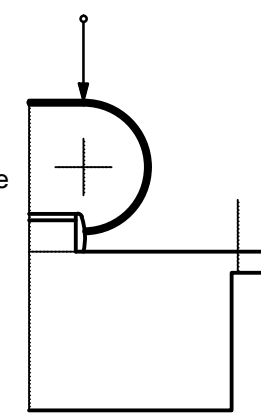
TO BE PROVIDED BY OTHERS (Observation of all Standards, guidelines acc. to each specific country)

Clear access route into the building 3.5 x 3.5 m  
access route must be obstruction free

Ⓢ Electric mains up to upper part of escalator  
Free cable ends: 1500mm long

Ⓢ Lifting points by others

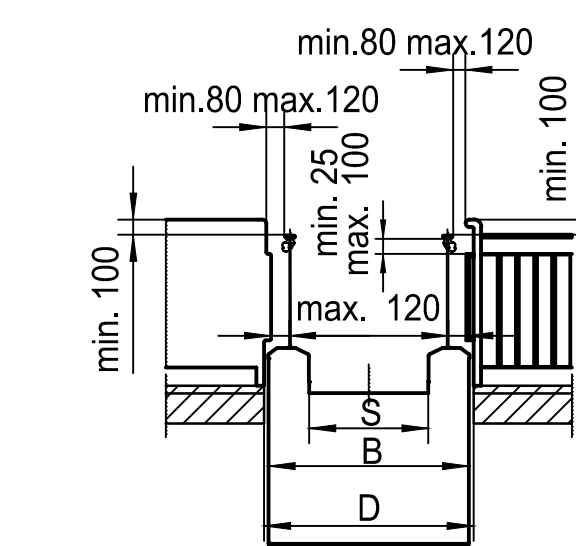
A railing reaching right to the escalator balustrades must be mounted according to EN 115-1:2008 A2.7. This railing must be designed to prevent people from falling down the balustrades when they let themselves being dragged by the handrail. The entry to the escalator handrail must be prevented. Barrier plates do not perform the function of a protective railing! See detail cross section!



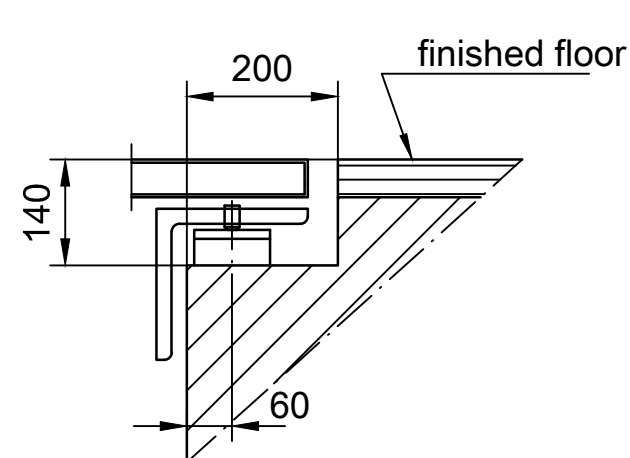
© (THYSSENKRUPP FAHRTREPPEN GMBH 2016)

ThyssenKrupp Fahrtreppen

Cross section



Support



Tolerance which have to be kept by others

Deviations in mm for distance at the measuring points

to 4m 10m 25m 50m 100m

± 5 ± 10 ± 15 ± 20 ± 30

1 Modifications

2

3

4

5

6

7

8

9

10

4 EK - 800mm 27.3°

Drawn 10.08.2016

Date Name

Widow

Installation of an escalator

E12060511-00

Scale 1:50 1:10

