

ESCALATOR SAFETY CURTAIN

Whenever escalators or moving walks are located in a void, the installation of Safety Curtains lowers the risks of misuse and prevents passengers from falling over the balustrade.



Beyond standard safety

Safety Curtains consist of one or two additional glass balustrades placed along the escalator or moving walk. They drastically lower the risk of passengers falls and are recommended for infrastructure and commercial units that are installed in open environments (e.g. atriums).



Quick and easy to install

Safety Curtains can be installed on site entirely from the inside of the escalator with no scaffolding required.



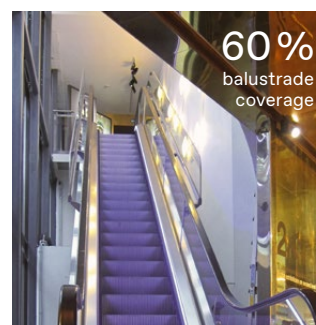
New and retrofit

Safety Curtains are available for all glass balustrade types on TKE velino series and tugela escalators as well as orinoco moving walks. They can also be retrofitted to existing escalators or moving walks.



Unobtrusive design

Our Safety Curtain solution elegantly blends in with both escalator and architecture featuring safety glass panels and discreet, yet robust aluminium holding profiles and cantilever consoles.

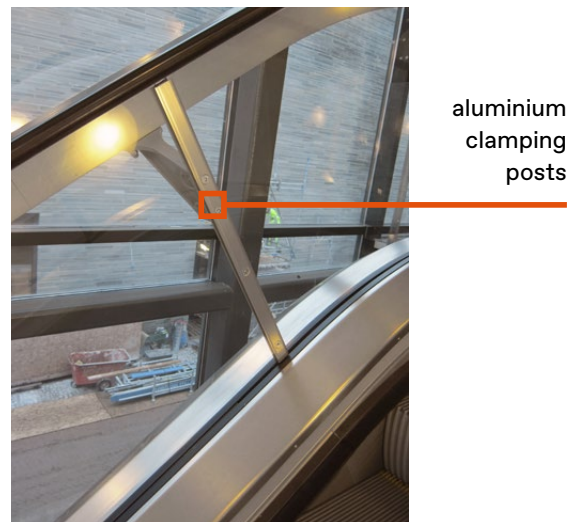
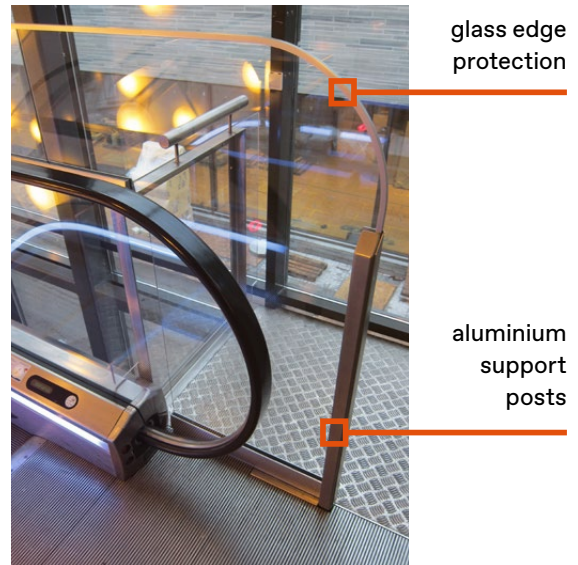


Features at a glance

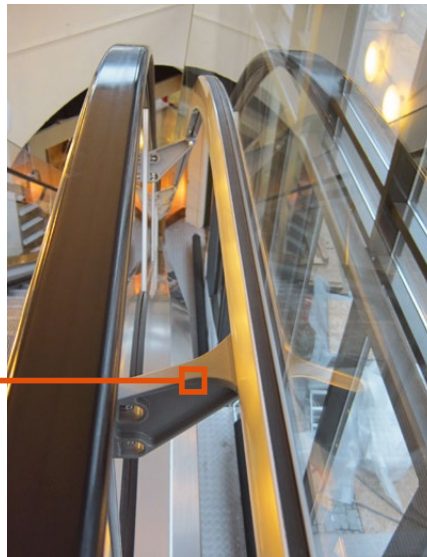
Escalator Safety Curtains are designed for maximum sturdiness and durability, but also to blend in with any building's architecture.

The 8 mm safety glass panels are held by a continuous aluminium profile mounted to the balustrade via cantilever consoles and two-part aluminium clamping posts. Rubber-covered ABS wedges in the holding profile prevent loosening. A protective edge on top of the glass edges avoids split-off damage.

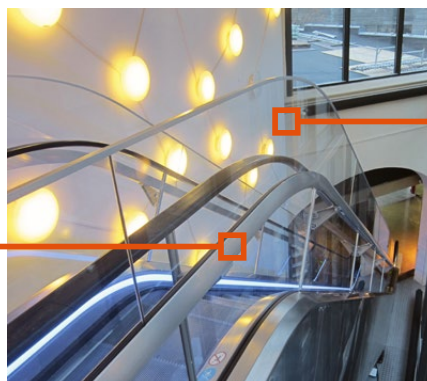
Connection of the Safety Curtain to a landing is secured with a support post for edge protection and ultimate stiffness. The fixed comb plates remain unchanged. Movable cover plates are shortened in width, any remaining holes or slots are covered with grinded stainless steel inlays.



strong cantilever consoles



continuous aluminium holding profile



8 mm safety glass