

Elevator Technology

thyssenkrupp Elevator AG  
thyssenkrupp Allee 1  
45143 Essen  
Germany  
[www.thyssenkrupp-elevator.com](http://www.thyssenkrupp-elevator.com)

engineering.tomorrow.together.

Individual details given in this publication are guaranteed only if confirmed expressly in writing and in each respective case. Details of the models shown are for illustration purposes only and may vary.

Version 1

Elevator Technology

iwalk

The easier way.





# The moving walk – reinvented for ease of use.



## High time for a reinvention.

Moving walks have existed since 1893. We thought it was time this integral component of urbane mobility at airports, shopping centers, metro stations and the like was in need of a reinvention. There are enough good reasons. For example, the sheer size of most moving walks requires extensive construction work for their installation. In some cases it is not even possible.

## Designed for ease of use.

iwalk, our reinvention of the moving walk, is a cutting-edge solution to the challenge of transporting people, trolleys and the like. Increased interior space and minimal comb heights combined with reduced outer dimensions make convenient ease of use possible. That sets up iwalk as the new industry benchmark.

## Project-friendly integration.

With iwalk planning is easier. The reduced weight, lower static load requirements and its modular structure allow last-minute design changes, while the pitless solution eliminates the need for any additional civil work, which makes iwalk suitable for sensitive surroundings. In fact, iwalk's oil-free system allows integration even in protected environments, such as museums, or over antique paving. Even outdoor locations are possible.

## Outstanding benefits.

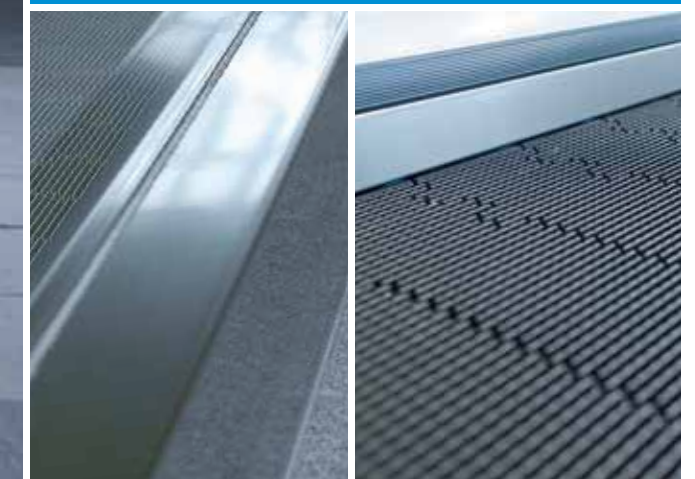
It's easy to profit from iwalk. Relocation is easier as no pit or crane is needed, especially for the pitless version. No visible fastening elements and a modern aesthetic design make iwalk easier on the eye. iwalk is also easier on the environment thanks to less transport packaging and a lower carbon footprint. This combination of proven state-of-the-art technology, easy installation and excellent service ensures your project will profit from a maximum degree of efficiency and reliability.



# A design to enhance any surroundings.



Whatever technical qualities a moving walk may have, what it looks like is of prime importance. After all, it's an eye-catcher in any building, and first impressions count. So we've made sure that iwalk will add to the visual appeal of your building. As an industry first, product designer specialists helped us in designing this moving walk, and the outcome is a design feature that fits in superbly well with any modern-day architecture.



## Distinctive balustrade design.

iwalk features a slim-line balustrade that can be equipped with a specially designed light channel. The balustrade decking profile can be used for attractive LED lighting. This distinctive design is a standout feature in any surroundings.

## Easier on the eye.

The new design also does away with the need for visible screws along the entire unit. This aspect gives iwalk a streamlined, state-of-the-art look. What's more, the higher proportion of glass in the glass-steel construction will also enhance your building's visual appeal.

## Attractive lighting options.

Lighting is an eye-catching design feature. That's why iwalk offers a wide variety of lighting options such as the under-handrail lighting that lets the handrail float over the balustrade to put your project in the right light. Just choose the lighting that best suits your surroundings.

## Outer decking replacement.

Even scratches will be no problem since the outer decking can be easily replaced with no trouble at all.



# True quality is evident in ease of handling.

Quality begins with design. Right from the start of our plans to reinvent the moving walk, we integrated quality factors into design development. The outcome is a moving walk that is easier to plan and integrate into your building or outdoor location. iwalk simply makes it easier to meet all your needs.

## Easier integration.

iwalk consists of standardized modules, which are delivered in handy packages. This not only allows speedy transportation, as with planes, but also eases their integration as well. iwalk can be the last unit to be incorporated after construction, i.e. you can store the modules and bring them to their final location, even by elevator.

30%  
less weight

## Easier on the building.

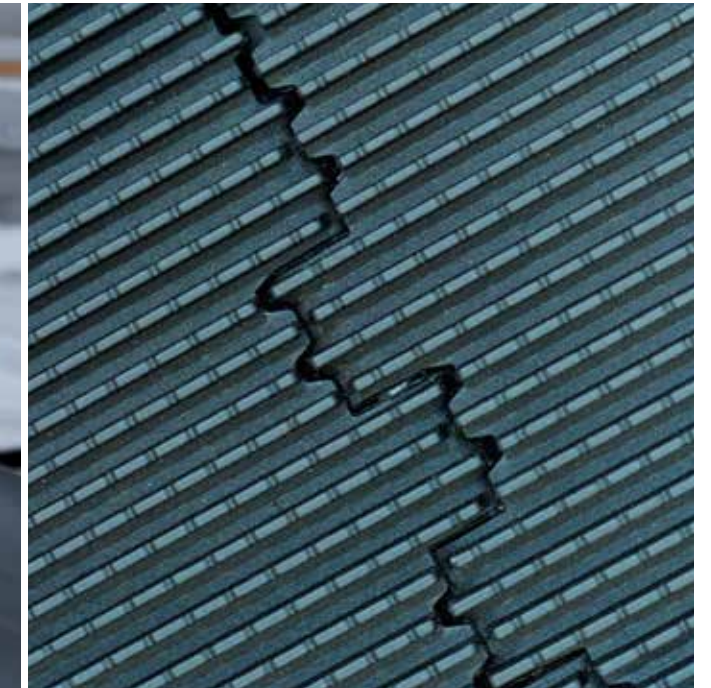
iwalk's unique configurations as semi-pit or pitless versions reduce the need for civil works or even eliminate them since you can simply place iwalk on the finished floor. In combination with 30% weight reduction compared to conventional designs, this gives you the chance to reduce, for example, floor thickness and thus enhance the visual quality of your building through higher ceilings.

## Easier planning.

iwalk's modules are easily interchangeable or replaceable so that even last-minute design changes are possible. If you decide you need to relocate your unit, iwalk makes it an easier option. All you need is a forklift truck. And the best thing is that if your building is not yet equipped with a conveyor system, iwalk allows infrastructural upgrades without additional civil works.

## Easier to meet your needs.

iwalk has been designed to meet the needs of its operator and all its users. In compliance with international codes, iwalk's standard 1,100 mm pallet width enables large trolleys and shopping carts to be used with ease. So you won't need to upgrade to a wider, more expensive pallet band, and your users will enjoy maximum convenience and safety. Additional access ramps are available for the pitless version.





# Design details to improve safety.

Compliance with safety codes is critical in today's safety-conscious world. This moving walk fulfills the safety requirements of all the relevant codes. With more than 50 safety features – standard, optional and beyond – iwalk has been designed so that the user can use this moving walk more safely.



## Full handrail guidance.

With an extended guidance handrail at the entrance and exit iwalk supports users in entering and leaving, which is especially helpful for the elderly and disabled.

## Useful traffic lights.

Several traffic light options help to guide traffic and clearly show an approaching user if an iwalk is functional and running in the desired direction.



**12 mm** Safety glass

**Extended balustrade**

**7 mm** comb height  
80% less



## Flatter combs.

The comb segments of iwalk are only 7mm above the pallet band, a reduction of around 80% compared to conventional designs. These almost flat combs greatly reduce stumbling risk in particular for persons of reduced mobility or trolley users.

## Handrail inlet.

The unique thyssenkrupp handrail inlet with a two door flap system eliminates rubber guards or brushes and reduces unintended activation. The wide opening is a safety improvement.



# Moving forward – sustainability in practice.



Since iwalk moves people forward, it is a matter of principle for us that this “forward-mover” be constructed in a forward-thinking way. So sustainability is a key design factor and constructional feature of iwalk. We not only manufacture it in a resource-efficient way, we have reduced the number of components and its weight, and offer energy-saving features that give it a lower overall energy consumption than conventional moving walks.

## Welcome savings for you and the environment.

Thanks to its reduced weight and intelligent energy efficiency measures, such as the smart frequency converter, iwalk achieves A+++ ratings in accordance with ISO25745-3, the global standard for escalator and moving walk classification. This helps in having your building certified.

**A+++ ≤ 55%**  
Energy efficiency

## Easier transportation.

A modular design and lighter construction facilitate transportation so fewer trucks or containers are required than with a conventional design. This reduces the CO<sub>2</sub> footprint during transportation.

## Easier on resources.

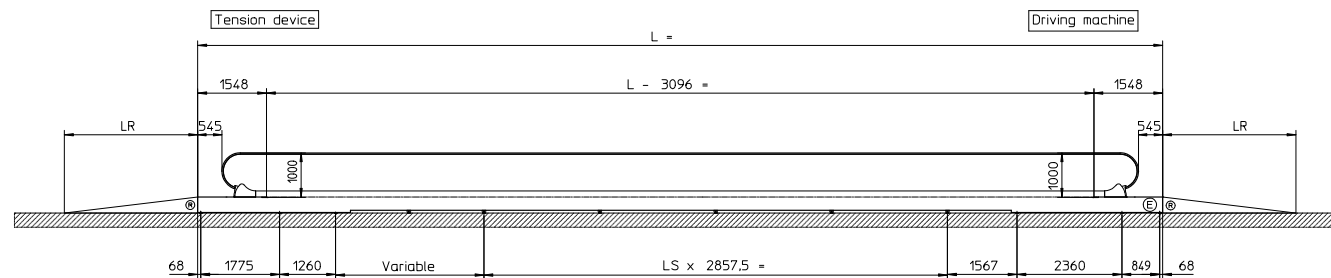
The materials and components used in a moving walk impact on the environment. iwalk's new design concept, in contrast, features a streamlined material mix that reduces the environmental impact during operation by up to 20%.

## Easier operability.

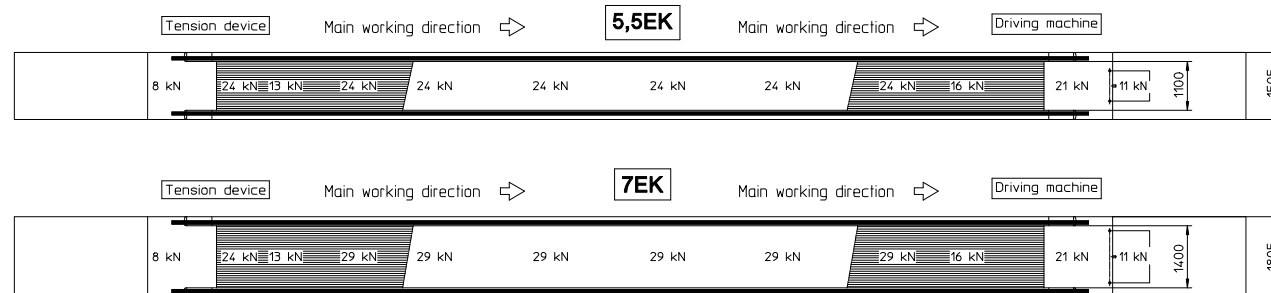
The innovative pallet construction and power transmission system need no chains and thus no lubrication either. As a result, iwalk eases the maintenance workload and reduces the impact on the environment, while at the same time offering users a safe ride.

# Technical details.

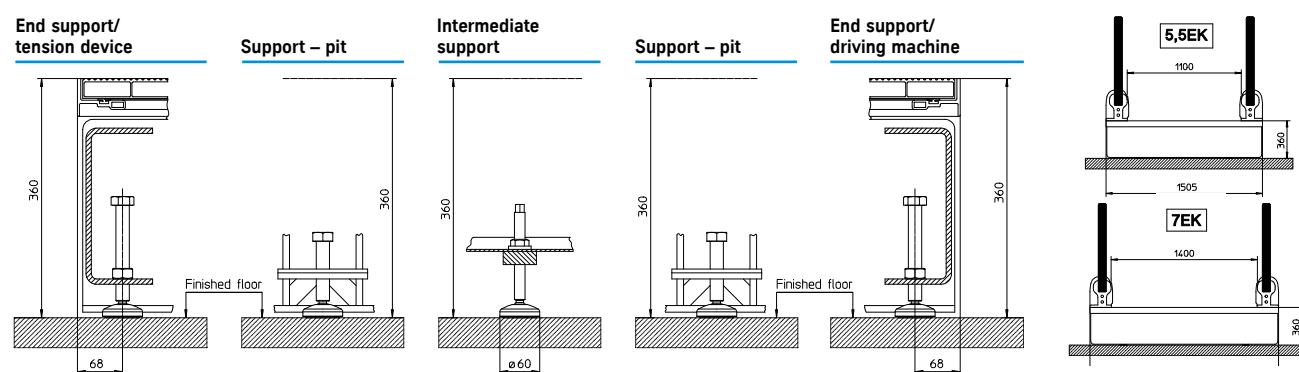
### Side view



Top view



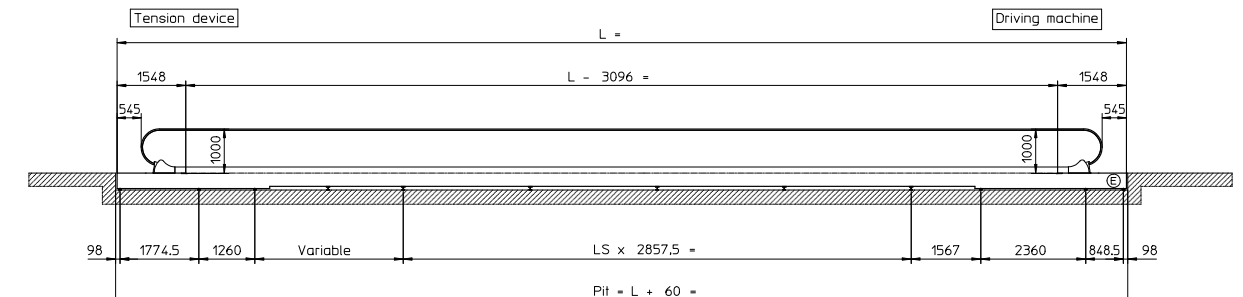
## Support



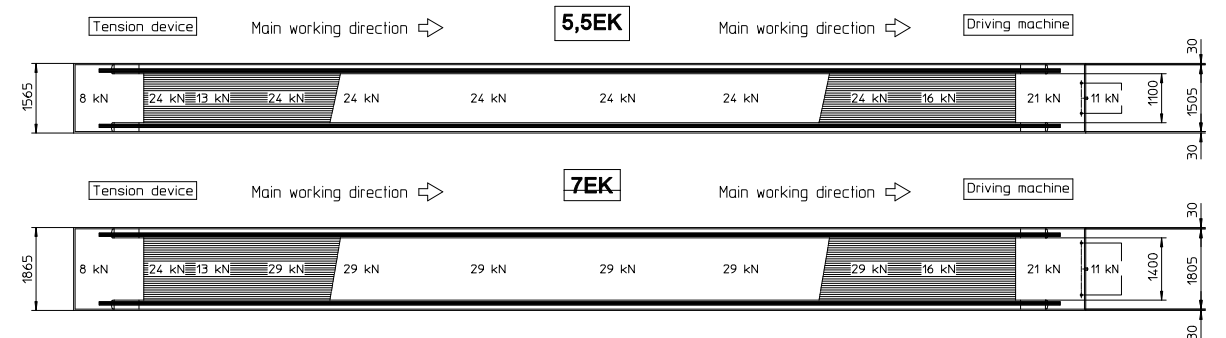
### Front view

Basic parameters	Pitless config.	Pit config.
Operating speed	0.5m/s and 0.65m/s	
Length	11.31 - 100m	
Balustrade height	1,000mm	
Inclination	0-6°	
Operating enviroment	Indoors/outdoors	
Standards	EN 115-1 / ASME 17.1	

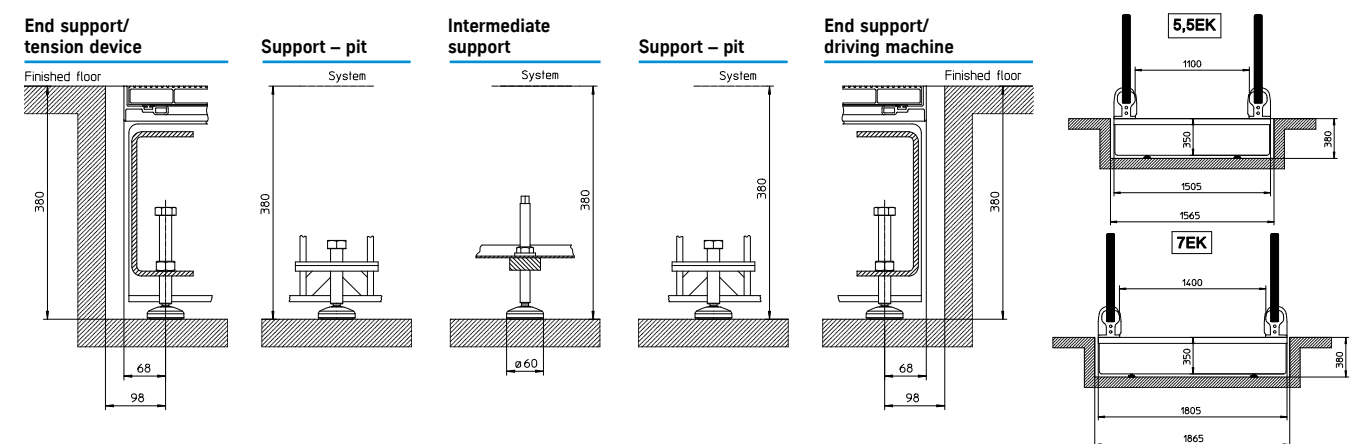
### Side view



Top view



## Support



### Front view

Width	Pitless config.	Pit config.
Outer width	1,505 / 1,805mm	
Pallet width	1,100 / 1,400mm	
Height	Pitless config.	Pit config.
Finished floor level to pallet band level	353mm	- 7mm
Length	Pitless config.	Pit config.
End of handrail newel to truss end	545mm	
End of handrail newel to end support	545mm	



# thyssenkrupp moves people – the future of urban mobility.

In 40 short years, we've become one of the world's leading elevator companies with unique engineering capabilities, offering next-generation solutions like MULTI, the ropeless elevator, ACCEL, an accelerated people mover, and MAX, a cloud-based predictive maintenance service. Whether building a new state-of-the-art system or optimizing and modernizing existing ones, our solutions deliver crucial energy and time efficiencies, helping to address the challenges of urbanization and transform cities into the best places to live.



Sales of over  
**€ 7.5 billion**

**50,000+**  
employees

Figures for our Elevator Technology business

## A trusted partner

We support our customers throughout their project lifecycle, from the design to the end-of-life phase. Every step of the way, we strive to fully understand their needs and consistently deliver the safest, highest quality passenger transportation solutions, maintenance and modernization packages.

Through our internal technical support function, ITS (International Technical Services), thyssenkrupp trains its service technicians in a multibrand portfolio, enabling them to successfully service more than 1.2 million units under maintenance.

## thyssenkrupp – the diversified industrial group

engineering.tomorrow.together – three words that describe who we are, what we do, and how we do it. Driven by global megatrends such as urbanization and the need for efficient use of environmental resources, our global community of more than 156,000 colleagues works together with our customers to harness our engineering expertise and strive for technological and business solutions that satisfy the demand for “more” in a “better” way.

Find out more: [www.thyssenkrupp.com](http://www.thyssenkrupp.com)



One World Trade Center



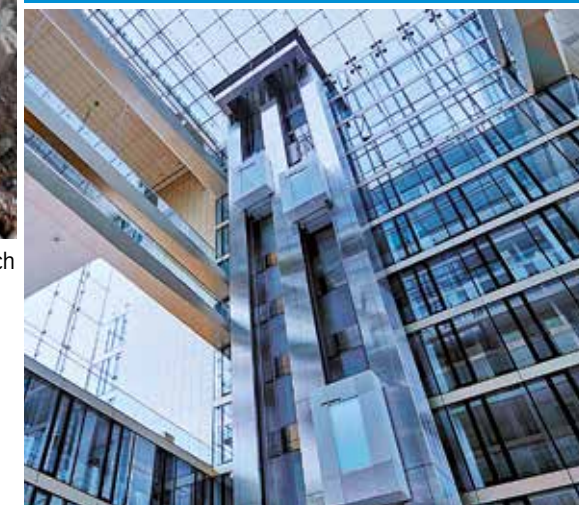
Makkah Clock Tower / Source © SL Rasch

We provide smart and innovative products for a wide variety of applications:

- Passenger and freight elevators
- Escalators and moving walks
- Passenger boarding bridges
- Stair and platform lifts
- Customized service and modernization solutions



Mercedes Benz



thyssenkrupp Quartier