

ADVENTURES

IN

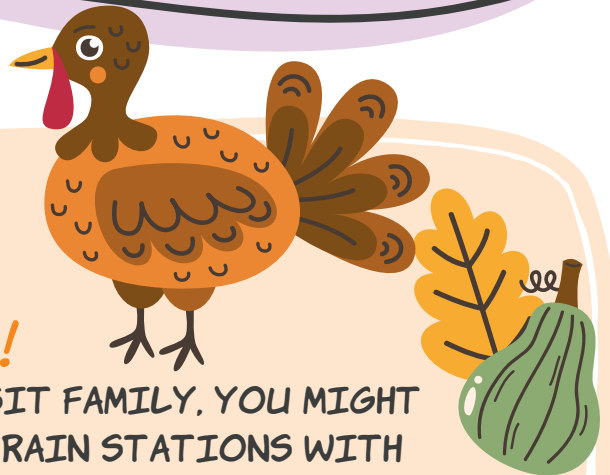
SAFETY

ISSUE 9



" THE HOLIDAYS ARE APPROACHING!

IF YOU'RE TRAVELING TO VISIT FAMILY, YOU MIGHT BE GOING TO AIRPORTS OR TRAIN STATIONS WITH ESCALATORS, ELEVATORS AND MOVING WALKS. EVEN IF YOU'RE IN A RUSH TO CATCH YOUR RIDE, TAKE TIME TO BE SAFE! ALSO, THE BIGGEST SAFETY TIP OF ALL FOR NOVEMBER: DON'T EAT TOO MUCH AT THANKSGIVING! "



YOUR FRIEND,
ELLIE

SAFETY TIP!



MAKE SURE YOUR SHOELACES ARE TIED AND NOTHING IS DRAGGING ON THE FLOOR WHEN YOU GET ON AN ELEVATOR OR ESCALATOR.

WHAT DO YOU CALL A SAD CRANBERRY?
A BLUEBERRY

SINCE IT'S A HOLIDAY, WE'RE GIVING YOU TWO JOKES YOU CAN TELL AT THE THANKSGIVING TABLE!

WHAT DO SWEET POTATOES WEAR TO BED?
YAMMIES

HA HA HA HA

NOVEMBER

is a month to be

thankful

We know you love elevators, so why not let your local TK Elevator office know you're thankful for them?

Send us an email or use our pre-designed template to write an old-fashioned letter and we'll send it to your local office.

Just print out the form, write what you want to say and send a picture of your letter to communications.na@tkelevator.com.

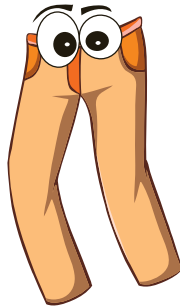
Here are some ideas for what to say:

- 🌀 Your favorite kind of elevator
- 🌀 Your favorite escalator
- 🌀 The building that has your favorite elevator
- 🌀 Your favorite elevator fact
- 🌀 Your favorite safety tip

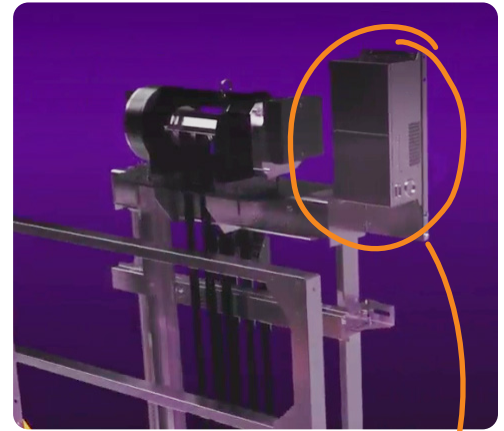
Or anything else you want to talk about! Have a fun and **Happy Thanksgiving!**



SMARTY PANTS



You know how it's slower and harder to run up a hill but faster and easier to run DOWN? It's the same thing with elevators. When they travel down, gravity does a lot of work - so much so that it **CREATES EXTRA ENERGY**. We figured out a way to **CAPTURE** that energy and feed it back into the building to power other things - like lights. To make this work, elevators need to have regenerative drive technology. Our elevators at One World Trade Center in New York City have these drives and supply enough energy to power all the lights in the building.



REGENERATIVE DRIVES



FUN FACT

People who work on elevators have their own lingo. One is **10TH FLOOR**. It's the same as **10-4**, which is something police officers say instead of "I heard you." The next time your parents ask you to clean your room, you can say "**10TH FLOOR!**"