

CAB FINISHES GUIDE

First impressions last, so we give you choices.



BEAUTY. VARIETY. SUSTAINABILITY.

Whether the goal is making a strong first impression or simply beautifying the elevator system, TK Elevator offers a complete line of elevator interiors to choose from. Customers can pick the color and finish of their choice to create appealing designs. By personalizing their elevators, they can stay true to the building's aesthetics.

Beyond simply creating attractive interiors, our products feature environmentally conscious options that support your efforts to "go green." TK Elevator offers elevator interiors that are free from wood products containing urea formaldehyde, utilize powder coating instead of solvent-based paint, and are third-party validated as low-emitting by Underwriters Laboratories (UL). We are the only elevator company that can say this.

On the cover:

Featured on the cover is a steel shell wall with applied panel design. Based on the elevator car capacity, more applied panels may be required.





The image shows the interior of an elevator cabin. The walls are covered in vertical panels with a wood-grain pattern, identified as plastic laminates. The ceiling is a dark reddish-brown color with several recessed circular lights. A horizontal metal handrail is visible across the cabin. The floor is made of light-colored wood planks. A black text box is overlaid on the left side of the image.

PLASTIC LAMINATES

Mix beauty and practicality with the decorative and durable raised panel design. These vertical panels are mounted on the steel cabin and are made of a core of urea-formaldehyde-free wood.

Based on the elevator cabin capacity, more panels may be required.

Pictured: Select Cherry (7759) applied panels

Woods



White Painted Wood
8902



Waxed Maple
8905



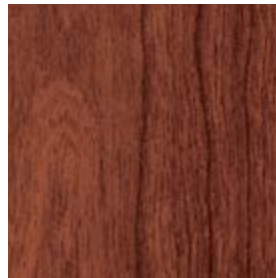
Fox Teakwood
8907



Danish Maple
8906



Planked Deluxe Pear
6206



Select Cherry
7759



Blackened Fiberwood
8916



Walnut Fiberwood
8915



Storm Teakwood
8908

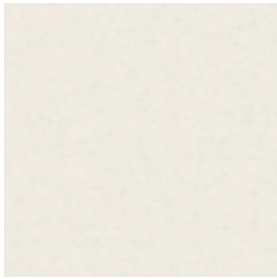


PLASTIC LAMINATES

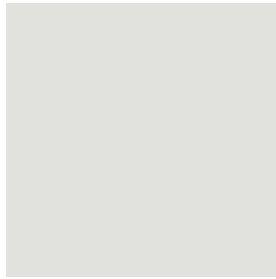
Vertically raised panels in wood tone, solid or patterned plastic laminate on a steel cabin will impress at first glance. These UL-validated, low emitting materials exceed stringent green requirements for indoor air quality.

Pictured: Graystone (464) applied panels

Solids



Dover White
7197



Graystone
464



Winter Sky
8792



Matrix Blue
8795



Stop Red
839

Patterns



Neutral Twill
8826



Sarum Twill
8827



Bubble Art
8958

Check with your sales representative for pricing.
Colors and patterns may vary slightly from the printed representations above.



POWDER COAT

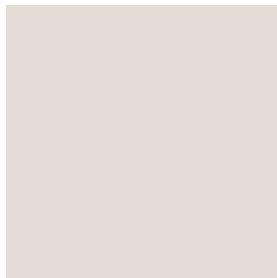
Powder coat is a durable, scratch-resistant yet environmentally preferable alternative to solvent-based paint.

It is free from volatile organic compounds (VOCs) and creates less waste. It can be easily recycled and requires less energy to cure. It also provides protection from UV fading and has a lifetime of 10+ years.

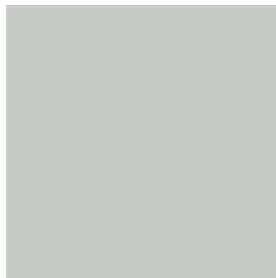
Displayed cab interior is a steel shell wall design used on pre-engineered product lines, such as the evolution and endura.

Pictured: Blue Patina (F-130)

Solids



Toasted Cotton
F-132



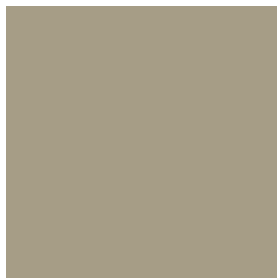
Smoked Silver
F-131



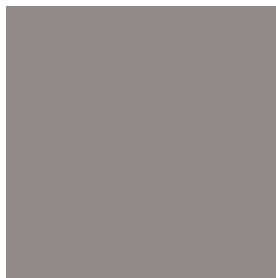
Field Coat
F-127



Elephant Ear
F-129



Prairie Grass
F-128



Reclaimed Gray
F-133



Blue Patina
F-130



Chai
F-125



Mustard Seed
F-126



Hibiscus
F-120



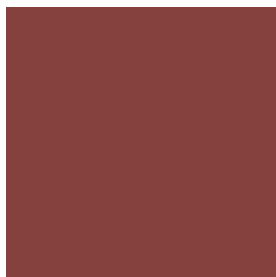
Coral Cables
F-124



Whistle Red
F-122



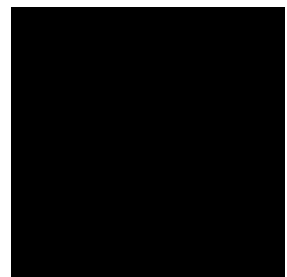
Clover
F-121



Cedar Brown
F-105



Chalkboard
F-119



Pitch Black
F-112

Check with your sales representative for pricing.
Colors may vary slightly from the printed representations above.



METALS

We offer you choices, whether you need vandal-resistant durability or want to retain a sleek polished interior.

Displayed cab interior is a steel shell wall design used on pre-engineered product lines, such as the evolution and endura.

Pictured: Brushed Stainless Steel

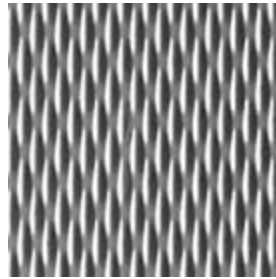
Textures



#4 Brushed Stainless Steel



#8 Polished Stainless Steel¹



5WL Stainless Steel¹



#4 Brushed Muntz^{1,2}



#8 Polished Muntz^{1,2}

¹ These metal finishes are only available for applied panel finishes.

² Available on the synergy and momentum product lines only.

Check with your sales representative for pricing.

TK Elevator Corporation
788 Circle 75 Parkway SE
Suite 500
Atlanta, GA 30339
P: +1 844 427 5461
www.tkelevator.com/us

TK Elevator (Canada) Limited
2075 Kennedy Road
Suite 600
Scarborough, ON M1T 3V3
P: 416 291 2000
www.tkelevator.com/ca-en



All illustrations and specifications are based on information in effect at time of publication approval.
TK Elevator reserves the right to change specifications or design and to discontinue items without prior notice or obligation.
© 2023 TK Elevator Corporation. © 2023 TK Elevator (Canada) Limited. CA License #C11-651371 | 35279 | Cab Finishes Guide