

ADVENTURES

IN

SAFETY

ISSUE 21

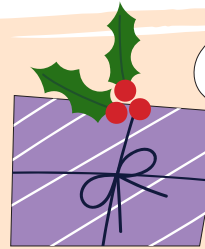


"HEY FRIENDS!

HA
HA
HA

WE'RE IN THE HEIGHT OF THE HOLIDAY SEASON (GET IT?), WHICH MEANS WE NEED TO HAVE HEIGHTENED SAFETY MEASURES, TOO! SANTA DOESN'T GO DOWN THE CHIMNEY WITHOUT SUPPORT, AFTER ALL! REMEMBER TO ALWAYS TAKE PROPER SAFETY MEASURES, WHETHER BAKING HOLIDAY COOKIES, SHOPPING FOR GIFTS IN A CROWDED MALL OR EVEN ONLINE!

YOUR FRIEND,
ELLIE



**SAFETY
TIP!**

ANY TIME YOU ENTER AN ELEVATOR,
STAND BACK FROM THE DOORS.
IT WILL LEAVE SPACE FOR OTHERS
TO ENTER OR DEPART.

HO HO HO

WHAT'S AN ELF'S
FAVORITE
MUSICAL GENRE?

WRAP MUSIC!



LOVE

TKE



We have a special-edition
COMIC BOOK

OUR COMIC BOOK IS HERE JUST IN TIME FOR THE HOLIDAYS! CHECK OUT SOME USEFUL TIPS ON HOW TO SAFELY TRAVEL DURING THE HOLIDAY SEASON!



Download the comic book!

WORD SCRAMBLE

A gift for you – a holiday-themed word scramble.

1. WNSO
2. ERET
3. EERNIERD
4. NTAAS
5. VOLE
6. HCREE
7. PYPHA
8. DBIGGRAERNE
9. GGE GON
10. SREPTSNE



**ANSWER
KEY**

1. SNOW 2. TREE 3. REINDEER 4. SANTA 5. LOVE 6. CHEER 7. HAPPY 8. GINGERBREAD 9. EGG NOG 10. PRESENTS

